

**Save a stamp, save a tree!**

If you wish to receive your Pensa Mensa Newsletter by e-mail only,

Send an email to:

[memberprocessing@americanmensa.org](mailto:memberprocessing@americanmensa.org)

E-mail distribution is strongly encouraged, as it saves our group money on printing and postage, and it saves trees and landfill space, too!



Volume 13, Number 9

September 2009

## Pensa Mensa



### Inside this issue:

The President's Page	3
The 10th Story	4
Membership News	5
Trivia	7
ExComm Minutes	8
Treasurer's Report	9
Précis- Book Review	12
Cryptograms	13
Upcoming Events	18
Puzzle Solutions	19

*Micah Butler, the elusive NWFL Mensa Vice President, makes an \*almost\* appearance at last month's ExComm meeting. Members are starting to wonder if Micah is actually just a figment of John Mochan's imagination...*

**Northwest Florida Mensa Officers**

President & Test Proctor	John Mochan	616 Overbrook Drive Ft. Walton Beach, FL 32547	850-585-3194 585-5067 jmochan@cox.net
Vice President	Micah Butler		mjb28@cox.net
Treasurer	Jerry Gilbert	700 Trowbridge Ave. Ft. Walton Beach, FL 32547	850-240-7068
Membership Officer	Robert Ulrich	7025 Pro Am Court Navarre, FL 32566	850-939-6870 bulrich@mchsi.com
Editor	Dana Schack	7319 Frankfort St. Navarre, FL 32566	850-499-9115 pensamensaeditor@hotmail.com
Gifted Child Coordinator & Webmaster	Jill Russ	12 Corbin Court Niceville, FL 32578	850-678-9169 jillsruss@yahoo.com
Gifted Child Coordinator	Debi Dunkerley	3941 McClellan Road Pensacola, FL 32503	debidunk@cox.net
Panama City Coordinator	George Chancellor	7523 Coleridge Road Panama City, FL 32404	850-874-0154 georgec584@aol.com
Arbitrator/ Mediator & Test Proctor	Steve Brumm	Panama City, FL	850-747-3247 ad4wt@aol.com
S.I.G.H.T Coordinator & Test Proctor	Mabel Loesch	2140 E. Scott Street Pensacola, FL 32503	850-433-2358 mloesch@bellsouth.net
GenX Coordinator	Nick Ahlen	9088 Iron Gate Blvd Milton, FL 32570	850-261-3253 nicholas_ahlen@mchsi.net

**Northwest Florida Mensa Home Page:** <http://www.nwflorida.us.mensa.org>

**Pensa Mensa** is the official newsletter of Northwest Florida Mensa. Opinions expressed are those of the contributors and not necessarily those of any Mensa group or its officers. Mensa is a not-for-profit international society, whose sole requirement for membership is a score above the 98th percentile on any number of standard IQ tests. Please contact one of the Test Proctors (see above) for testing in Northwest Florida. Subscription rates for non-members: \$10.00/year by writing to the editor. Pensa Mensa welcomes your comments and contributions.

**Contact the editor at:** [pensamensaeditor@hotmail.com](mailto:pensamensaeditor@hotmail.com)

**The President's Page***John Mochan*

It's been a busy summer so far and it isn't over yet. I hope all of you got to see the nice picture in the Bulletin of the awards that Jill Russ won for her work on Northwest Florida Mensa's website [www.nwflorida.us.mensa.org](http://www.nwflorida.us.mensa.org)

Mary Ann and I went to the Regional Gathering in Birmingham last weekend and had a great time. The group from Huntsville helped put on the event and it was great. We saw some new programs that we would like to add to ValenTime next February. I can't tell you the details because they made us sign a 'non-disclosure' statement about just exactly what happened. But I can say that it was fun, and Mary Ann won first prize with her partner, Ike Kullman from Piedmont Area Mensa in South Carolina.

We are starting to get the Committee together for our next RG. Terri Culbertson is getting people organized. If you have ideas for the program or can volunteer a little time and effort, please get in touch with her and she will put you to work. I have 7 people already signed up to attend. This is the earliest that this has ever happened. We are getting a lot of very favorable publicity for ValenTime at other groups' events and I hope to set a new record for attendance next year.

The September Excomm meeting will be hosted by our Editor, Dana Schack. Come on out and see what your group is doing. You might even make a few new friends!  
~John.

**Mensa Milestones for September**

<b>Mensa Birthdays</b>		<b>Mensa Anniversaries</b>	
James R Scholter	2	Timothy D Sutton	33
Robert Todd Glasure	6	David F Howard	30
Douglas L Mann	6	Tony Ray Gilligan	29
Robert Rowell	6	Gretchen K Gilligan	27
Jerry Gilbert	10	James W Harris	22
Bobbye Sikes Wicke	16	Frank Durand	19
Barbara Woolwine	18	Lawrence Miles Wager	19
James Battles	20	Brian T Halonen	16
M E "Buddy" Hall	20	Bobbye Sikes Wicke	9
Dean Emerson	21	David L. Woodward	5
Micah Butler	24	Peter Griffiths	2
Robert Ulrich	26	Nick Ahlen	1
		Wayne Hayes	1
		Elizabeth Wright	1

## The Tenth Story

*Mel Dahl, RVC 10*

This month's column is about housekeeping matters.

In last month's column I said that our Region 10 Web site was not well publicized. Somebody took that as a slap at the former RVC, Maggie Truelove, and I want to clarify that that was not my intention at all. In point of fact, Maggie mentioned the Web site numerous times in her column. Despite Maggie's mention of it, for some reason the Web site didn't seem to take off, and that's all I meant to convey. My apologies to Maggie and to anyone who thought my comments were directed at Maggie; the Web site's failure to take off was in spite of her efforts and not because she was derelict in her duty. Nor was it directed to the Webmaster, Eddie Truelove, who spent a great deal of time and effort on the Web site, for which I thank him.

Second, one of my campaign promises was to give all LocSecs in Region 10 the opportunity to cross-pollinate by talking to each other (and to me) via monthly conference call. I would like to set up the first one for the week after Labor Day (which, incidentally, is also the week after Broward County's not-to-be-missed Suite Tooth RG). I am publicly asking all LocSecs, as well as the two assistant RVCs, to email me and let me know when that week would be most convenient for us to chat by phone for 30 minutes

or so – evenings, weekends, graveyard shift, during church, let me know what works for you and I'll try to find a time that works for everyone.

Finally, as many of you are aware, Mensa recently settled litigation against the drug firm Inpharmatica for wrongful use of our trademark. It is with some dismay that I have heard rumors flying around that Mensa is in dire financial straits (with bankruptcy possible) as a result of that litigation. That rumor is industrial-strength bullshit (note to editors: If your newsletter is too family-friendly for use of the word "bullshit" feel free to replace it with some appropriate synonym) Mensa's finances are just fine. We've made a few trims at the national office (for example, the American Mensa Committee will only be having three face-to-face meetings a year instead of four until further notice), and there are some new initiatives and programs that are being postponed, but I don't expect anyone at the individual or local group level to even notice. If anyone has any questions about that, feel free to ask.

I hope to meet many of you in Fort Lauderdale over Labor Day Weekend at the Broward County RG. Until next month,

Mel

## Membership News

*Bob Ulrich*

We had another mild up tick in total membership in July 2009. We added 5 local members, but lost 3 for a net gain of 2 and a new total of 203 members. This number represents a number of new milestones for group membership. It is 23 more members than we had at the end of July 2008, a 12.8% increase, and it is the highest number of members ever at the end of July. It is the 5<sup>th</sup> month of this calendar year that we have had 200 or more members, a first. Thanks to all of you who have joined or renewed and made this happen.

The 3 departures are caused by a sad event, an usual event and a relocation. The sad event was the passing of long time member (25 years) Dr. Jefferson Damon-Davis of Navarre. I have spoken with Dr. Damon-Davis at a number of Mensa functions and know he will be missed by many.

The strange departure is mystery woman Debbi Kempton-Smith. She joined Mensa in May 2009 with an address that is a PO Box in New York, NY. She joined our local by preference. Some of you may not know this, but Mensa will allow you to belong to any local group by choice. A frequent reason would be if you have long time ties to a certain area and moved you might still want to receive the newsletter and info from your previous local. Neither John Mochan nor I nor anyone else I talked to knew anything about Ms. Kempton-Smith or why she would pick our local group. On the July roster she is listed as a foreign transfer out of American Mensa. Who knows what the story behind this is?

The 3<sup>rd</sup> loss is a much more mundane home move. Kirsten Udd formerly of Navarre has made a long relocation to Kaneohe, HI.

The 5 additions were made up of 2 members moving into our area, 2 former members rejoining, and 1 new member. Relocating to Northwest Florida were Timothy Gottschalk who goes from Tulsa, OK to Niceville, and Navy Captain Scott Wilson who relocates from an overseas APO address to Pensacola. Welcome to our area to both of you.

Members rejoining Mensa are Joanne Horne and Sharon Muncie. Many of us know Joanne and her husband Bob as hard working local members who have contributed much during their membership. Joanne related that she never intended to let her membership lapse, but work had her so busy that the renewal fell between the cracks, but in the end, her absence was brief. Sharon Muncie of Pensacola has been away from the organization for a longer time, more than a year. We are glad both of you came back.

The new member is Young Peter Seigh in Gulf Breeze. We hope Peter has a long and enjoyable time in American Mensa.

## Special Interest

**Motorcycles SIG.** Dan Mazzeo of Gulf Breeze is vetting the idea of a SIG for anyone having an interest in motorcycles (owning one is not a requirement). Contact Dan at onegoodengineer@aol.com or 850- 206-4213.

**Photography SIG.** Dan Murray in Pensacola (455-6339) found out there was no camera club anywhere near him, so he started one.

**Pinochle SIG.** Contact Bob Mundorff in Navarre at 850) 939-5882 or pinochledd@aol.com. He will coordinate dates/times/schedules and is willing to host the games. For beginners too.

**Shooting SIG.** Contact Bob Mundorff in Navarre at pinochledd@aol.com or 939-5882 to go shooting during the week at the Escambia River Muzzleloader's range - modern small arms allowed.

## Next Meeting **Saturday, Sept. 19 at 1:00 PM**

The September Executive Committee (ExComm) meeting will be held at the home of our Editor, Dana Schack. All of our members are welcome to attend, and our LocSec John Mochan has a reputation for running efficient meetings that enable us to get the business over with quickly so we can move on to socializing! It is time to start planning our world famous Valertime RG. We are expecting record attendance this year and already have received early registrations, so we need all the help we can get! We strongly encourage member participation at these meetings. Remember, the more you put in to your local Mensa group, the more you'll get out of it, so come on over!

7319 Frankfort St. Navarre 850-499-9115

## Seven Trivia Questions

*Dr. Dan Finley*

1. For what is Alexander Cartwright best known?
2. What is the name of the 19-year-old heiress who was kidnapped by the Symbionese Liberation Army in 1974 from her apartment in Berkeley, California?
3. What American artist and illustrator is responsible for the "Keep on Truckin'" comic, *Fritz the Cat*, and the album cover design for *Cheap Thrills* by Big Brother and the Holding Company?
4. By what name does the world's oldest extant Christian *Bible* go?
5. What country in the Horn of Africa is said to be the first Sub-Saharan African country to adopt Islam?
6. What is the name of the 1986 Caldecott Medal for Children's Literature winner that describes a train ride for children to the North Pole at Christmas time?
7. Identify the major U.S. city located near the confluence of the Columbia and Willamette [will-AM-et] rivers and the home to Voodoo Doughnuts.

*Dr. Dan Finley is the Brain Bowl Coach & Health Sciences Professor, Gulf Coast Community College, Panama City. Dr. Dan invites you to submit a guest trivia question to dfinley@gulfcoast.edu for possible inclusion in future columns.*

## A Hero's Welcome

For those of you who know Art & Vera Cartwright, Arthur is back home safe from Pakistan!! He is moving with Vera to his next assignment to the Air Force Academy in Colorado. We wish them the best in all that they do.

## ExComm Minutes

*Micah Butler*

Minutes for 8-15-09

Meeting was called to order at 15:00 with John Mochan, Terri Culbertson, Bob Ulrich, Dana the Schackinator, Micah Butler, and new member John Hoover present.

**President's report:** The B'ham RG was a lot of fun. All of the B'ham Mensans sent their hellos along with John on his way back to Pensacola. We have 7 people already signed up for Valentime 2010.

**Vice President's report:** Jack Squatery

**Membership Officer:** We have crested 200 members once again. See the column on page 5 for details.

**Treasurer's Report:** See report on the next page.

**Editor's Report:** Our overbearing editor has nothing important to say. Grumbings towards the lethargic Vice Pres recording the minutes were not recorded.

**Old Business:** NEIN!

**New Business:** The request for shrimp has been made for Valentime 2010 and the need for a proper RG committee is in order. Persons wanting to join in on or be a part of the RG committee may contact Terri Culbertson. Once enough for a committee has been acquired an internal election and appointment will commence to decide roles of those helping on the committee. Also several presenters for interesting presentations have already expressed interest for the RG which looks to be shaping up to be fun filled as usual. Bob Horne will of course still head up Hospitality so don't think you're getting his spot!

**Next meeting will be at 1:00 PM, September 19<sup>th</sup>, 2009 at Dana's house aka the Love Schack.**

Meeting was adjourned at 15:07.

## Just For Kids

Thanks for your great response to the very first issue of FRED, the new magazine written by and for Mensa kids. While the elves are busy typing away on the second issue of FRED which will come out in October, they're still accepting submissions for issue 2: "Living Things." Everything submitted before August 21 will be included in issue 2. If they still have space, things submitted before early September may or may not be included. The deadline for submission to issue 3: "Life, the Universe and Everything" will be November 21. Please encourage your kids to submit their work for publication. They will accept artwork and photos, as well as jokes, trivia, poems, stories, reviews, etc. Send your submissions to [YMMagazine@us.mensa.org](mailto:YMMagazine@us.mensa.org)

## Treasurer's Report

*Jerry Gilbert*

<b>Balance, June</b>		<b>\$7872.77</b>
Income	American Mensa Funding, August	191.52
	2010 RG Registration	150.00
Expenses	Newsletter, June	-160.14
	Newsletter, July	-142.82
<b>Balance, Date</b>		<b>\$7911.33</b>

## Newsletter Deadline

All members of NWFL Mensa are welcome to contribute to *Pensa Mensa*. Please feel free to submit articles, photos, artwork, events you would like to host, or anything else that might be of interest. The editor reserves the right to alter contributions as necessary for publication. All contributions for next month's newsletter must reach the editor no later than the 15th of the previous month. Contact the editor at

[pensamensaeditor@hotmail.com](mailto:pensamensaeditor@hotmail.com)

# September 2009

Sun	Mon	Tue	Wed	Thu	Fri	Sat
		<b>1</b>	<b>2</b>	<b>3</b>	<b>4</b> 11:00 a.m. <b>Looong Lunch</b> Scenic 90 Café 701 Scenic Hwy. Pensacola	<b>5</b>
<b>6</b>	<b>7</b>	<b>8</b> 6:00 p.m. <b>Supper Club</b> Hall's Seafood 920 E Gregory St. Pensacola	<b>9</b>	<b>10</b>	<b>11</b>	<b>12</b> 11:30 a.m. <b>Lunch</b> Chef Imondi's 448 Harrison Ave. Panama City
<b>13</b>	<b>14</b>	<b>15</b> Newsletter Deadline	<b>16</b>	<b>17</b>	<b>18</b> 5:00 p.m. <b>Happy Hour</b> Location TBA	<b>19</b> 1:00 p.m. <b>ExComm Meeting</b> Dana Schack's Home 7319 Frankfort St. Navarre
<b>20</b>	<b>21</b>	<b>22</b>	<b>23</b>	<b>24</b>	<b>25</b> 11:30 a.m. <b>Lunch</b> Cheers Pub 1270 N Eglin Pkwy Shalimar	<b>26</b> 2:00 p.m. <b>Fold, Staple, Multi- late, &amp; Play Games-</b> Dana Schack's home 7319 Frankfort St. Navarre
<b>27</b>	<b>28</b>	<b>29</b>	<b>30</b>			

## Précis

Fraser Sherman

### World War II!

**INSIDIOUS FOES: The Axis Fifth Column And the American Home Front** by Francis McDonnell shows how America's fear of Nazi infiltration in the thirties provokes the same kind of paranoia as the Red Menace did two decades later, due to the widespread conviction that Western Europe couldn't have fallen so quickly without spies weakening them from inside (a view encouraged by Britain in hopes of convincing the USA that the Third Reich was a threat to both nations). A very good job covering actual Nazi espionage here and abroad and our response (and related fears such as Japanese and Soviet infiltration) though awfully dry (I was anticipating more on how the idea was handled in popular culture).

**HOLLYWOOD GOES TO WAR: How Politics, Profits and Power Shaped World War II Movies** by Clayton R. Koppes and Gregory D. Black does an impressive job covering government efforts to make Hollywood toe the party line on the threat of fascism, show how allies such as China and the British Empire were really democracies just like us and to show how all Americans were united in the war regardless of unimportant things like segregation, management/labor issues or class and money. Needless to say, this involved a lot of willful ignoring of reality ("MISSION TO MOSCOW presents Stalin's show trials as a necessary step to eliminate Nazi agents, and the Nonaggression Pact as buying him time to arm Russia.") and inevitably a lot of ludicrous fault-finding (PALM BEACH STORY was criticized for presenting America as full of frivolous rich people who weren't fighting the good fight). A fine job on the subject.

## Cryptograms

Jill Russ

### Easy Level

GRQ SHH Y KRW RL SDYJW ZQGS XCWF IQDB XRDHN, BQW GRQ FYJIKG HTHJ SHH Y  
SDYJW XRDYN XCWF Y IQDB ZQG. ~HJCPY ARNZ

**Challenge Level** The Challenge Level includes the "space" as part of the cryptogram. In other words, the letter R might actually be the space, and a space might actually be a letter. The end of each line of the cryptogram is the end of a word. Punctuation marks are not included.

OUBWYRWDBKUYREBHDORMQIZMLBREWBUULIVP

HDRMQIZMLBQPRQBYREBYIOPQBLUTDBPDXBREW

ZUULIVPBQPRQBVFPDBYIOPQBLUTDBPIY.

~MEAEUKE

## News From National

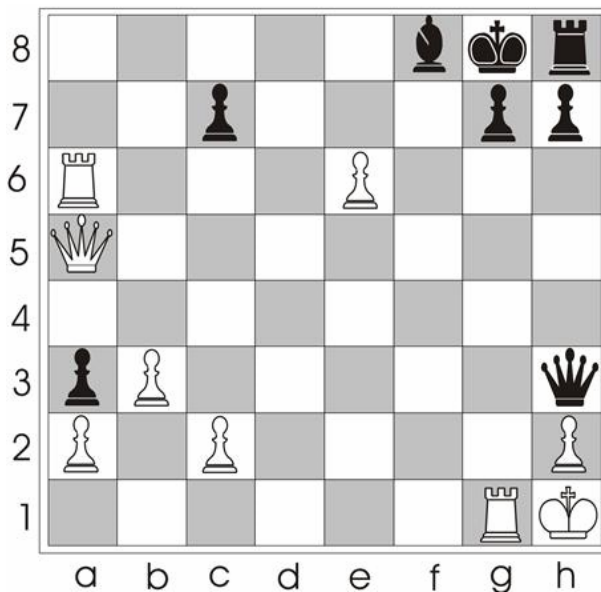
### Gather up your MBA and business school friends: September is Free GMAT Month!

Anyone with a qualifying score for Mensa membership on the GMAT can submit it at no cost for review. This will save a new member \$40! A score of 95 percent or higher qualifies. The promotion will run from Sept. 1 - 30, 2009. A person must send in their application by Sept. 30, but can submit their test scores by Dec. 31, 2009. This is to compensate for the time it takes to receive requested test scores. On the application, the applicant needs to input "Free GMAT Month" in the promotional box.

If you have any questions, please e-mail American Mensa's Marketing Coordinator Lauren Fernandez at [laurenf@americanmensa.org](mailto:laurenf@americanmensa.org).

## Chess Problem

Lars Runar



Reprinted with permission from  
*Chess Training in 533+1 Positions* by László Polgár.  
©1994 Köncemann Verlagsgesellschaft.

## What the Heck is SIGHT?

Mabel Loesch

One of the lesser known benefits of Mensa membership is S.I.G.H.T., which stands for Service and Information, Guidance and Hospitality to Travelers. Exactly how much is offered to traveling Mensans is entirely up to the SIGHT person in each group. In the 20 years or so that I have done this in Pensacola, I have hosted several days' stay to two Mensan couples, one from Germany who were going across the U.S. on SIGHT. I have had numerous calls for advice on restaurants.

I have used SIGHT in Hawaii, where the host took us around for a day of sight-seeing. He offered a place to stay, but I declined. Another experience was in Poland, where a young Mensan insisted we stay with his parents. "They have a three room apartment so there is lots of room." He spoke English well, but was in school during the day, so we coped as best we could with his parents who did not. They were enthusiastic hosts. We slept on the sofa, ate on the coffee table, and had the best steak tartare and mushroom soup that I have ever had, before or since.

Typically, if there is only a call for advice, there is no further obligation. If you stay overnight, or longer, you are expected to host a meal in a restaurant, and give your host a gift.

Because there is so little activity in SIGHT locally, I have not accumulated a list of would-be hosts. I would like to know if anyone is willing to provide over-night hospitality.

Members who would like more information on SIGHT or would like to participate as hosts or visitors should contact our local SIGHT Coordinator, Mabel Loesch at [mloesch@bellsouth.net](mailto:mloesch@bellsouth.net)  
850-433-2358

---

**Scholarship Winner***Carley Williams*

Carley Williams is the winner of the Dianna Massy Memorial Scholarship awarded by Region 10 Florida Mensa. She is the daughter of a local member and plans to attend Auburn University. This is her scholarship-winning essay.

**"Dreaming is Believing"**

Throughout my life I have been truly blessed with great friends, wonderful teachers, a loving family, and an amazing church community. Without the love and compassion of these people, I would not be who I am today. As if it were just yesterday, I can still remember the very first time I decided that I wanted to be an architect. I was nine years old and my parents were thinking about building a house in another neighborhood. I fell in love with looking at house plans and would sketch my own plans in my room every night to show off to my parents. Although this may seem like a small experience, it has influenced me to choose architecture as my career path in life.

Following building trends and economic growth in Bay County as well as the preservation of wetlands in our area, I am especially interested in designing eco-friendly homes and businesses. My ultimate goal is to attend college and major in architecture. This spring, I will intern with a green builder who serves on the board for the new Bay County International Airport. As well as interning to advance my knowledge of architecture, I also love math. The lowest grade I have ever made in math is an "A". Currently, I am taking calculus as an elective at my school and love learning how to apply it to life situations. I believe life experiences are

the best ways to learn and grow.

Adding to my strong interest is my involvement at my high school. Currently, I am Mosley High School's 2008-09 Student Body President and spend the majority of my time serving my school of two thousand students and the surrounding community. I also represent my school as a Varsity Cheerleader. I have experience in coordinating large events such as prom, homecoming and Winter Formal as well as designing and building impressive stage props, floats, etc. I have been in charge of budgets as large as \$15,000. The opportunities I have had at my high school only contribute and strengthen my ability to become an architect.

I believe that I should never live life as though I had not tried or taken advantage of every opportunity. I try to do my best in every situation. My philosophy on life is to look back and feel proud that I lived life to my fullest and never let my dreams pass me by. My goal for college is to excel as a student and a role model to any aspiring architect or any other major who does not have the courage to follow their dreams.

I know the importance of faith and perseverance in order to succeed in life. I am confident that my life experiences, strong academic background and ability to serve others will add to the University I am hoping to attend. Years from now I want to look back and feel proud that I am a successful architect because that is my dream.

## September Events

**4th - Friday 11:00 AM-1:00 PM** **L-o-o-o-n-g Lunch**

Usually on the 1st Friday of the month. As you enter the restaurant go to your right and to the rear.

*Scenic 90 Café, 701 Scenic Highway, Pensacola*

**8th - Tuesday 6:00 PM** **Supper Club**

Usually on the 2nd Tuesday. Call Dan Murray on his cell phone 455-6339 after 7 p.m. or on weekends, please.

*Hall's Seafood 920 E. Gregory St., Downtown Pensacola*

**12th- Saturday 11:30 AM** **Lunch at Chef Imondi's**

Usually on the 2nd Saturday of the month.

*448 Harrison Ave, Panama City*

**18th - Friday 5:00 PM** **Happy Hour!**

Usually on the 3rd Friday, at rotating locations.

*September location was not chosen at time of printing. Contact Dave Howard at dave\_howard@prodigy.net or 897-5702 for details.*

**19th - Saturday 1:00 PM** **ExComm Meeting**

Usually on the 3rd Saturday, at rotating locations. This time, at

*Dana Schack's home. 7319 Frankfort St., Navarre*

**25th - Friday 11:30 AM** **Lunch at Cheers Pub**

Usually on the last Friday. It's at the back of a yellowish office building north of the courthouse, on that side of the street. Turn at the red-and-yellow sign and go through the parking area all the way to the back and to the right.

*1270 N. Eglin Pkwy, Shalimar*

**26th - Saturday 2:00 PM** **Fold, Staple, Mutilate, & Play Games**

Usually on the last Saturday, usually at Dana Schack's home. Bring your swimsuit if you want to enjoy the pool!

*7319 Frankfort St., Navarre*

## Solutions

7. Portland, Oregon
6. *The Polar Express*, written and illustrated by Chris Van Allsburg.
- Somaliand, and the French Territory of Afars and Issas.
- capitol city is also named Djibouti. It was previously known as French
5. Djibouti, pronounced je-BOO-tee, note that the "D" is silent. Its
- dates to the 4<sup>th</sup> century C.E. Most of it is held in the British Library.
4. *Codex Sinaiticus*. This handwritten version of the Greek *Bible*
- interesting documentary movie about him and his work called *Crumb*.
3. Robert Crumb, or commonly known as R. Crumb. There is an
- tional headlines during its unfolding.
- and even robbed the Hilbernia Bank with them. The story made na-
- became sympathetic with her captors (possible Stockholm Syndrome)
- months before she was apprehended. In the intervening months, she
2. Patricia (Patty) Hearst; she was held for one-year and seven-
- early games pitted one firefighter squad against another.
- firefighter founded the Knickerbocker Base Ball Club in 1842. The
- sports historians. Cartwright, a New York bookseller and volunteer
- that Abner Doubleday invented modern baseball is dismissed by most
- cited with this achievement by the U.S. Congress in 1953. The myth
1. He is credited with inventing modern baseball. He was officially

## SEVEN TRIVIA QUESTIONS

1. Q c8 Kd5
2. Qc4 Kc4
3. Kb6 Checkmate

## CHESS PROBLEM

*Challenge*  
 God made woman beautiful and foolish; beautiful, that man might  
 love her; and foolish, that she might love him. ~Unknown

*Easy*  
 You see a lot of smart guys with dumb women, but you hardly ever  
 see a smart woman with a dumb guy. ~Erica Jong

## CRYPTOGRAMS