

### The President's Page ~ John Mochan

We're getting closer to the Holidays now and I hope all of you enjoy them with family and friends. The November lunch in Panama City had 16 people attend and we had a great time. That's a bit of a drive for us, but always worth the company. And the party at the Russ' home in Niceville was also well attended. I tried all three kinds of chili and they were all tasty. The football game was fun to watch assuming you are a Gator fan.



By now, you've finished all the leftover Thanksgiving turkey and are busy putting up the Christmas decorations. If you've never seen Mary Ann's Christmas decorations, I can definitely say that you would be quite impressed. Gulf Power loves us for our December contribution. But it truly looks beautiful and gets everyone in the right spirit. Happy Holidays to all!

~ John

### Treasurer's Report ~ Jerry Gilbert

Date	Event	Debit	Credit	Balance
10/23	Newsletter	84.40		6324.38
11/13	Newsletter	99.20		6225.18

### Membership News ~ Bob Ulrich

Just to let you know how dedicated I am to this group I am typing this column on Saturday Nov. 8th while sitting in a hotel room in Barcelona Spain. We left home on Wednesday Nov. 5th and arrived in Barcelona yesterday, which was the same day the national office e-mailed the membership list for Oct. 31, 2008. We will not be back in the States until November 22nd, which is probably after our fine newsletter editor will want newsletter submissions. Fortunately this hotel has free WiFi service allowing me to receive the roster and type and send this column before we leave this hotel on Monday for a cruise ship.

Anyway I am happy to report that we had a net gain of 3 members in October bringing our new total to 191 members. I didn't bring all my Mensa files on vacation (I am not that dedicated!), so I cannot tell you how this number relates to previous years. I will bring it all up to date next month.

The group had 1 member loss due to relocation. Our relatively new member Fred Mahoney, he joined Mensa and our group in June 07, moved from Navarre to Herndon, VA. We wish him luck there. Since we had a net gain of 3 members we obviously had 4 additions to Northwest Florida Mensa.. Two members who have been away from Mensa for an extended time, more than a year, have decided to rejoin. They are Forrest Slavena Jr. in Gulf Breeze and Paul Woody in Pensacola. Also rejoining Mensa is Mark Bosa who lives in Panama City. Mark was away a shorter time. We are glad these three fine gentlemen decided to come back to the fold.

The other addition is a brand new to Mensa member, Robert Holmes who resides in Panama City. Welcome to Mensa, Robert, we hope you have a long and fruitful membership.

**The Tenth Story ~ Maggie Truelove, RVC 10**

In case you weren't at the SCAM RG at the end of October, you missed a number of things. You missed a dynamite RG! You missed some excellent meals. You missed some well-versed speakers. And you missed the announcement by Mary Kay Dailey that she was withdrawing as a candidate for RVC 10 in the upcoming election. Unless we add petition candidates, this means that we will be choosing between Mel Dahl (Central Florida Mensa) and Thomas Thomas (Tampa Bay Mensa) to be the next RVC 10. This will be a tough decision, as both men are very capable. So be sure to listen to what is said and read what is written to aid you in your decision-making.

**NEWSFLASH!!**

Mensa has an interesting new member benefit. This is a web-based career center to connect job seekers with prospective employers. As a Mensan, you can post your resume and apply for jobs at no cost, as well as post job opportunities you might have for other members at a discounted rate. Non-members may also look for employees and jobs here as well, but they will pay a fee. There are lots of interesting details available about this program, but rather than taking up the space in your newsletters, do please look at the details on the website ([us.mensa.org](http://us.mensa.org)).

I am writing this column on November 5, in part because one newsletter has a very early deadline, in part because I am leaving in the morning for an AMC meeting and strategic planning session in Arlington, Texas. I stayed up quite late last night, watching the coverage of the presidential election. It was one of the best evenings of television in a long time! Both candidates gave excellent speeches, I thought. McCain's graciousness in concession was much higher class than that of his audience. And Obama was at his best as an excellent orator. What a night!

There are two Regional Gatherings coming up in the next couple of months. Central Florida Mensa's Smarti Gras is January 30-February 1 in Kissimmee. And Northwest Florida's ValenTime is February 13-15 in Destin. Come and party with us!

At the risk of being politically incorrect, I wish you a Merry Christmas and Happy New Year, as well as whatever other holiday celebrations you may observe at this time of the year.

---



## ExComm Minutes ~ Micah Gilbert

Meeting was called to order at 14:17 on Saturday November 15, 2008 by Micah Butler

Attendees: Terri Culbertson, Jerry Gilbert, John Mochan, Micah Butler, Mabel Loesch, Tom Russ, Jill Russ, Alexander Russ

President's Report: I ain't got squat.

Vice President's Report: Glad to be here.

Treasurer's report: See treasurer's section in the newsletter.

Editor's Report: Not in attendance.

Membership Report: Report has been sent in from Spain and has been translated for reading in the newsletter

Old Business: None, that's why it's old.

New Business: Discussions have begun with regards to our yearly scholarship fund. Possible increase in funds allotted for the scholarship and number of scholarships offered was brought to the table but will be discussed further later. Advanced registration for the Annual RG held in Destin has started. Members and intending guests are encouraged to sign up as early as possible so we will know how many to plan for. The form for registration is available on the website. Terri is soliciting for speakers so if you have a topic you would like to speak about please contact Terri Culbertson about possibly speaking at the RG. A youth room will be put together similar to last year for young Mensans and other guests who like to be kids. \*Micah was happy\*.

## Mensa Milestones for December

### Mensa Birthdays

David Dunlap	12/5
James Lambert	12/9
Lars Runar	12/11
Sally Garth	12/16
Lauren Smith	12/16
William Graham	12/17
Laura Dolly	12/19
Morrie Beitch	12/20
John Mochan	12/27

### Mensa Anniversaries

Alida Weber	32
Robert Mundorff	25
Archibald Hovanesian	16
Linda Campbell	14
Larry Caley	11
Basil Fossum	11
William Browning	10
Richard Engelland	10
Donald Hines	10
Milton Rogers	10
Donald Kornegay	9
Shirley Branan	5
Colby Van Atta	5
Cameron Pouncey	4
Lauren Holland	

## Toying with Ideas– Kathe Oliver

Everyone likes toys. December is a month when people pay a lot of attention to toys, partially as holiday gifts and partially because the December school vacation gives families an unusual amount of playtime. While the type of toy that is fun often changes with age (for example, Teddy bears are forever, but rattles are not), the fact that play is an important part of life does not change. People play during their entire lives, using play as a way to relax, learn, socialize, and express creativity.

Toys are tools for play. For the right person, a toy can be a teething ring, a board game, a chemistry set, computer software, or cookware. The idea of toys specifically made for children has been a part of human culture for all of recorded history. Some toys are hugely popular for a short period of time, perhaps in only one area or culture, and then disappear. In 1955 almost every American child wanted one of Davy Crockett's coonskin caps, but the fad was soon over. Other toys, such as balls and dolls, are found in virtually every culture and time.

Here is a list of some of the best-selling toys of the last century, and the year in which they were first sold. How many of these have or had a place in your house?

Crayola Crayons® (1903)

Tinker Toys® (1914)

Lincoln Logs® (1924)

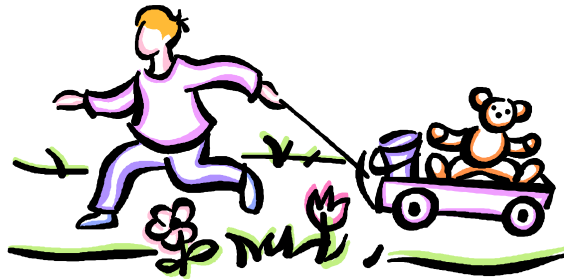
LEGOs® (1930)

Etch A Sketch® (1959)

Barbie® (1959)

Nerf Balls® (1970)

Transformers® (1984)



Most of these new toys were variants on ancient toy ideas. They have several things in common: All of them were inexpensive enough that families could afford to buy them, and sturdy enough to survive enthusiastic play. They were adaptable and could be used in different ways, so that they would hold children's interest for several years. Most importantly, they all encourage people to be creative and use their imaginations. These toys ask questions: What are you going to build? What adventures will you go on? What games can you invent?

The Strong National Museum of Play in Rochester, New York, is home to the National Toy Hall of Fame. It honors 34 toys, including the cardboard box, a favorite toy of children around the world. In many cases, small children would rather play with the box that a toy comes in than with the toy itself. The list of Hall of Fame toys is available online at <http://strongmuseum.org/>.

Think about your favorite toy. Has it always been your favorite toy, or would you have chosen something else three years ago? What makes it your favorite toy? If your favorite toy is not in the National Toy Hall of Fame, you can nominate it for inclusion by going to the nominations website at <http://strongmuseum.org/nthof/nominate.asp>. Be prepared to explain what makes the toy special to you.

Anyone can invent a toy, from almost anything. In the 1760s, London mapmaker John Spilsbury had a problem: he had too many unsold maps. He glued a map to a thin wooden board, then used a jigsaw to cut around the map's borders. He sold his maps, and invented the jigsaw puzzle.

In 1955 Joe McVicker found out that children liked to play with the wallpaper cleaning compound that he made. He changed the formula slightly, and created Play-Doh®. Approximately 700 million pounds of this wallpaper cleaner turned toy have been sold in the past fifty years.

## Toying with Ideas– Kathe Oliver (continued)

Do you have an idea for a toy that would be at least a much fun as a cardboard box? Let your imagination run wild! A homemade toy can be a lot of fun to make, and even more fun to play with.

If you don't start with an idea, but would like to build a toy, have someone to put together an invention bag for you. Ask them to fill a paper grocery bag with an assortment of materials: cardboard and magazines from the recycling bin, spools, pipe cleaners, straws, or whatever else may be on hand. Then see what ideas the items in the bag generate. (Continued)

For students in fifth-eighth grades, Sally Ride Science offers an annual TOY challenge, in which teams participate in a toy designing competition. For information, visit the contest's website at <http://www.toychallenge.com/abouttc.shtml>.

Handmade toys can make very special gifts. If you decide to make a toy as a gift, be sure that it is safe for the person who will play with it. Toy safety is an especially difficult problem for young gifted children. Most toys (and the patterns and kits that are sold for making many toys) come with age recommendations.

These are based on considerations of intellectual and physical development, as well as safety. Young gifted children are often intellectually ready for toys that aren't safe for them. Small or fragile parts can lead to tragedy.

To learn about toy safety and hazards, visit the Toy Industry Association website at [www.toyhotline.org](http://www.toyhotline.org). To see a list of toys that have been removed from sales due to safety problems, visit the Consumer Products Safety Commission's website at <http://www.cpsc.gov/cpsc/pub/prerel/category/toy.html>.

Enjoy your toys!

\*\*\*\*\*

(Published in IMprint, the Newsletter of Northern New Jersey Mensa, December, 2006. This article may be reprinted without alteration by any AML local group, as long as credit is given to IMprint and the author.

---

## Upcoming Events

First Friday in Pensacola, L-o-n-g Lunch	<b>December 5</b> 11 a.m. - 1 p.m.	<b>Lunch at Scenic 90 Café</b> , 701 Scenic Highway, Pensacola. Drop in for a long visit if you can, a short one if you can't - no requirement to stay the full time. As you enter the restaurant, go to your right and to the rear.
Second Saturday in Panama City	<b>December 13</b> 11:30 a.m.	<b>Lunch at Chef Imondi's Downtown</b> , 448 Harrison Ave, Panama City.
Second Tuesday in Pensacola	<b>December 9</b> 6 p.m.	<b>Supper Club in Pensacola</b> at Hall's Seafood, 920 E. Gregory St., downtown Pensacola. Call Dan Murray on his cell phone, 455-6339, after 7 p.m. or on weekends please.
Third Saturday	<b>December 20</b>	<b>Christmas Party</b> at Dana and Andy's in Navarre. Invitation to follow by e-mail, or check web site.
Third Friday	<b>December 19</b> 5 p.m.	<b>Happy Hour!</b> The Tijuana Flats Burrito Company on Eglin Pkwy.

---

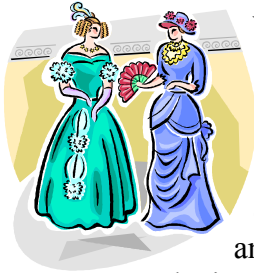
# December 2008



Sun	Mon	Tue	Wed	Thu	Fri	Sat
	1	2	3	4	5 11:00 a. m. Looong Lunch at Scenic 90 Café. 701 Scenic Hwy., Pensacola	6
7	8	9 6:00 p.m. Supper Club in Pensacola, Hall's Seafood, 920 East Gregory	10	11	12	13 11:30 a.m. Lunch at Chef Imondi's Downtown, 448 Harri- son Ave., Panama City
14	15	16	17	18	19 5:00 p.m. Happy Hour at Tijuana Flats Burrito Company, 39 Eglin Pkway NE	20 Christmas Party- home of Dana and Andy Snyder- details to follow
21	22	23	24	25	26	27
28	29	30	31			

**Précis ~ Fraser Sherman*****Women!***

**THE WEAKER VESSEL** by Antonia Fraser is an exhaustive look at women's lives in the 17th century—wives, mistresses, midwives, whores, artists, businesswomen (surprisingly an area where women were considered quite acceptable, on the grounds it was an extension of budgeting for a household), widows, prophetesses and the changes in their standing wrought by time and the English Civil War (which much like WW II jolted women out of their usual roles, though they were squeezed back into them fairly quickly). Better for research than casual reading (though some of the life stories Fraser has collected are delightful), but a good job.



**VICTORIA'S DAUGHTERS** by Jerrold M. Packard shows how Victoria's influence as Queen of England may have been matched by her role as the mother of a brood that gave us Russia's Alexandria, Kaiser Wilhelm (Victoria's grandson) a monarch of Finland ("He encouraged the Fins to consider Republicanism instead.") and the current royal family of Spain. If occasionally overplaying the Tragic Family card (sometimes Packard seems to think everyone else in the world married happily and had 50 glorious years together), very good at capturing the mixed brood Victoria gave the world and showing us a British queen capable of passionate love and sexual desire or of making little handkerchief-rabbits for her grandchildren.

**Cryptograms ~ Jill Russ*****Easy Level***

VMWNW PL QZEO QZW ANWCJ YQNVM MCKPZU...

VQ EPKW YMPEW OQT CNW CEPKW,

CZA APW QZEO YMWZ OQT CNW AWCA.

-- CNTZAMCVP NQO

***Challenge Level***

The Challenge Level includes the "space" as part of the cryptogram. In other words, the letter R might actually be the space, and a space might be a letter. The end of each line of the cryptogram is the end of a word. Punctuation marks such as apostrophes, commas, and periods are not included.

QPBXCEPVHOHOZHVPZJEPQEYPCXEPEVJH

QEYPCXEPEVJHPRCBPQLPQEPGHVHPEVJH

QPBXCEPVHOHOZHV.

-- RJIJYEXPNCXTUHE



## Seven Trivia Questions ~ Dr. Dan Finley

### QUESTIONS:

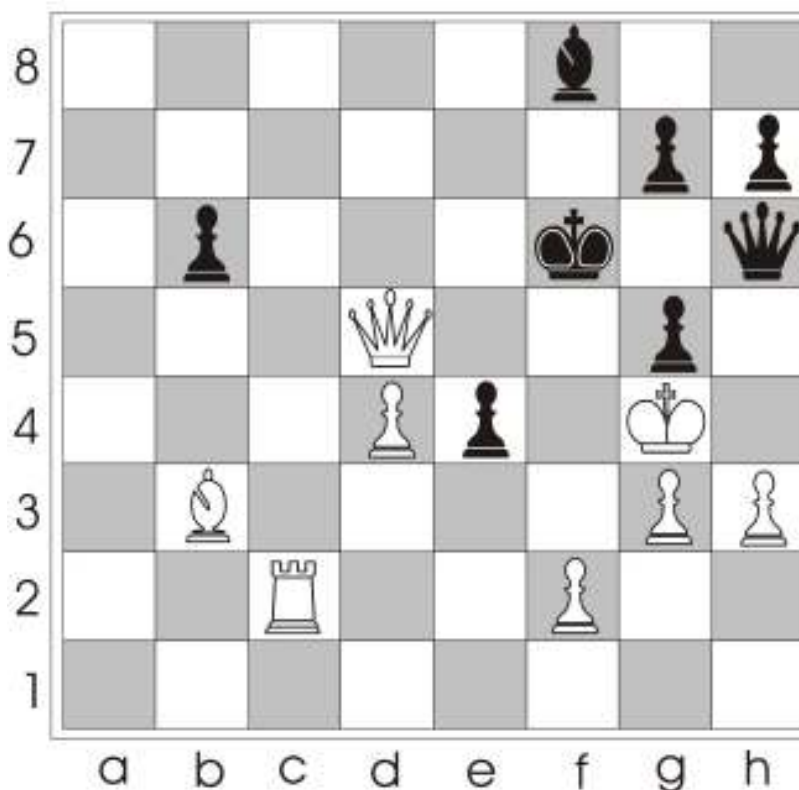
1. Who was the designer of the Vietnam Veterans Memorial Wall monument?
2. What is an 'honorific'?
3. What is crystalline water?
4. Who is the author of Gigi?
5. What is shish kebab?
6. What is the ancient name for Tokyo?
7. What is the topic of Irish playwright George Bernard Shaw's Major Barbara?



*Dr. Dan Finley is the Brain Bowl Coach & Health Sciences Professor, Gulf Coast Community College, Panama City. Dr. Dan invites you to submit a guest trivia question to [dfinley@gulfcoast.edu](mailto:dfinley@gulfcoast.edu) for possible inclusion in future columns*

## Chess Problem ~ Lars Runar

### MATE IN THREE – BLACK TO MOVE



Reprinted, by permission, from Chess Training in 5333+1 Positions by László Polgár. ©1994 Könemann Verlagsgesellschaft.

**Northwest Florida Mensa Officers**

President	John Mochan	616 Overbrook Drive Ft. Walton Beach, FL 32547	850-585-3194/585-5067 jmochan@cox.net
Vice President	Micah Butler	8196 Lode Star Drive, Pensacola, FL 32514	850-723-8305 mjb28@cox.net
Treasurer	Jerry Gilbert	700 Trowbridge Ave. Ft. Walton Beach, FL 32547	850-862-4800
Membership Officer	Robert Ulrich	7025 Pro Am Court Navarre, FL 32566	850-240-4471 top2@cox.net
Editor	Cheryl Cullison	7230 Keating Terrace Pensacola, FL 32504	850-484-9784 pensamensaeditor@cox.net
Gifted Child Coordinators	Jill Russ	12 Corbin Court Niceville, FL 32578	jillsruss@yahoo.com
	Debi Dunkerley	3941 McClellan Road Pensacola 32503	850-469-4602 davendebi@cox.net
Panama City Coordinator	George Chancellor	7523 Coleridge Road Panama City, FL 32404	850-874-0154 georgec584@aol.com
Arbitrator/ Mediator and Test Proctor	Steve Brumm	Panama City, FL	850-747-3233 AD4WT@aol.com
S.I.G.H.T Coordinator & Test Proctor	Mabel Loesch	2140 E. Scott Street Pensacola, FL 32503	850-433-2358 mloesch@bellsouth.net
Test Proctor	Joanne Horne	641 Merioneth Court Ft. Walton Beach, FL 32547	850-315-0255 johorne@cox.net
Webmaster	Jill Russ	12 Corbin Court Niceville, FL 32578	jillsruss@yahoo.com

**Northwest Florida Mensa Home Page:** <http://www.nwflorida.us.mensa.org>

**Special Interest Groups**

**Motorcycles SIG.** Dan Mazzeo of Gulf Breeze is vetting the idea of a SIG for anyone having an interest in motorcycles (owning one is not a requirement). Contact Dan at [onegoodengineer@aol.com](mailto:onegoodengineer@aol.com) or 850-206-4213.

**Photography SIG.** Dan Murray in Pensacola (455-6339) found out there was no camera club anywhere near him, so he started one.

**Pinochle SIG.** Contact Bob Mundorff in Navarre at 850-939-5882 or [pinochledd@aol.com](mailto:pinochledd@aol.com). He will coordinate dates/times/schedules and is willing to host the games. For beginners too.

**Shooting SIG.** Contact Bob Mundorff in Navarre at [pinochledd@aol.com](mailto:pinochledd@aol.com) or 939-5882 to go shooting during the week at the Escambia River Muzzleloader's range - modern small arms allowed.

**SOLUTIONS****CRYPTOGRAMS**

Easy

THERE IS ONLY ONE DREAM WORTH HAVING...TO LIVE WHILE YOU ARE ALIVE, AND DIE ONLY WHEN YOU ARE DEAD. --

ARUNDHATI ROY

Challenge

I DON'T REMEMBER, BUT IT'S NOT TRUE. IT'S NOT TRUE, AND IF IT WERE TRUE, I DON'T REMEMBER. -- AUGUSTO PINOCHET

**SEVEN TRIVIA QUESTIONS**

1. Maya Lin. In 1981, at age 21 and while still an undergraduate at Yale, Lin won a public design competition for the Vietnam Veterans Memorial. The black cut-stone masonry wall, with the names of fallen soldiers carved into its face as requested by the families of the casualties, officially opened to the public on November 13, 1982. The wall is granite and V-shaped, with one side pointing to the Lincoln Memorial and the other to the Washington Monument. Lin's conception was to create an opening or a wound in the earth to symbolize the gravity of the loss of the soldiers.
2. It is a title conveying respect or praise, e.g., a Hindu honorific is 'swami.'
3. Ice is the crystalline form of water.
4. Colette, which is the pen name of the French novelist Sidonie-Gabrielle Colette (1873-1954). She published 50 novels during her lifetime, many with autobiographical elements. The themes of her novels ranged from idyllic natural tales to dark struggles in relationships and love. All of her novels were marked by clever observation and dialogue with an intimate, explicit style. Her most popular novel, Gigi, was made into a Broadway play and a highly successful Hollywood motion picture.
5. Shish kebab is Turkish for meat on a stick or skewer; the Turkish term is siskebabi, or roast beef on a spit
6. Edo
7. Shaw's work, Major Barbara is critical of both Christianity and the Salvation Army

**CHESS PROBLEM**

1. Qh7 Rh7
2. Rg8 Rh8
3. Rg8 Mate



*ValenTime*

**Northwest Florida Mensa’s Regional Gathering will be held February 13-15 2009 (3 PM Friday thru Noon Sunday) at the Holiday Inn, 1020 Hwy 98 East, Destin, FL.**

**Registration: \$50 per person if paid by Feb 12, \$55 per person at the door, or \$20 per person for Friday night, \$35 for Saturday, and \$10 for Sunday. Please make checks payable to Northwest Florida Mensa.**

Name(s) \_\_\_\_\_

Address \_\_\_\_\_

Phone: \_\_\_\_\_

Email: \_\_\_\_\_

Please mail this form to:  
Registrar — ValenTime  
616 Overbrook Dr.  
Fort Walton Beach, FL 32547-3528

Contact: John Mochan  
(850)-585-3194, [jmochan@cox.net](mailto:jmochan@cox.net)



Room rates APPROXIMATELY \$75—\$108 depending on Gulf View. Double occupancy. Add \$10 per extra person. Call the hotel at (877)-837-6181 or (850)-837-6181 and tell them you are with the Mensa group.

Visit us at:  
[nwflorida.us.mensa.org](http://nwflorida.us.mensa.org)