

PensaMensa

The President's Page ~ John Mochan

It looks like we are all in for a busy September. This edition of the newsletter contains your ballot for our group's President, Vice-President, and Treasurer. Please vote by returning your ballot to Bill Nichols. You can also express your preference to him by email. Be sure to include your membership number to verify your identity. The ballots have to be to Bill by September 20. There is also the big Garage Sale at the home of Tom and Jill Russ on the 20th. Contact them at 678-9169, or call me at 585-3194 to donate items for the sale. This has become quite a good money maker for us in the last few years and has enabled us to increase the Scholarship money we give out in the Fall.

Volume 12, Issue 9

What Do You Think?

What do you think about the format change for our monthly PensaMensa newsletter?

Forward any comments or concerns to:

pensamensaeditor@cox.net



Treasurer's Report ~ Jerry Gilbert

6/20	Balance			5931.18
6/28	Newsletter & Stamps	238.80		5692.38
7/18	American Mensa Funding		161.78	5854.16
8/5	Newsletter & Stamps	99.60		5754.56
8/15	American Mensa Funding		168.95	5923.51

Note: We had 9 mail outs for \$5.85. One new member. \$1.00. Testing rate is now \$15.00 vs. old rate \$5.00

Membership News ~ Bob Ulrich

Again this month there is not a lot to report about membership changes. At the end of July (as always membership data is one month delayed) Northwest Florida Mensa had 180 members. This represents a net gain of one member during that month. In 2007 we had a better July and gained 6 members so at the end of that month we had 186 members. There is still not a large difference.

On the relocation front we stayed even with one move out and one move in. Daniel Ryan moved from Pensacola to Virginia Beach, VA and William Harding made a long distance relocation from Mililani, HI to Pensacola. We are always (well lets say usually) sorry to see a member leave, but happy to welcome someone in.

Our other addition is young Andrew Carney who lives in Gulf Breeze and is a new member of Mensa. We hope he has a long and happy membership.

I am sorry to say that Lynda and I will be unable to attend and help at the September Garage Sale at the Russ house in Niceville. We will be donating a few things but cannot be there to assist. I encourage everyone to donate or help or, if possible, do both. I also wanted to thank those who attended the Pool Party in August. We had a fairly normal sized group and the weather cooperated for the most part. It seemed everyone had a pleasant time

The Tenth Story ~ Maggie Truelove, RVC 10

There are several things Local Groups need. The first of these needs is for a group of dedicated individuals who are prepared to keep the group running. These are the members of your ExComm (Executive Committee). They do an awful lot of work for no pay, little recognition, and much aggravation. Often what they get is a member complaining how "you people" should do it this way or that way, rather than an offer to help accomplish a change or improvement.

Another of these dedicated individuals, who may or may not be a member of your ExComm, is the editor of the newsletter. The editor is the main line of communication to the members, and like the ExComm, does a lot of work for no pay, little recognition, and much aggravation. Please do join me in giving a pat on the back to those who are or have been serving their local groups in this way.

Another thing the Local Group needs is money. This is for publishing and mailing the newsletter, funding whatever projects the group has, and incidentals. There are several sources for said money. One is the portion of each member's dues which is sent to the Local Group by the national office. Another source of money is testing, as each person a proctor tests returns \$15 to the local group. Many but not all groups have regional gatherings, which may or may not prove to be a source of income, but hopefully so. Beyond that, some groups have fundraisers of various sorts, some to benefit the general fund, some for special purposes like scholarships.

Another need of the Local Group is active members. Some of these are needed to hold various offices, whether elected or appointed. A volunteer might be needed to make phone calls. A few volunteers are needed once in a while to serve on the elections committee. Some volunteers are needed to host occasional local events for the group. (This can be as simple as hosting a lunch get-together at a restaurant or as easy as making popcorn and having people over to watch a movie.) Others are needed to write for the newsletter.

(Poetry? Columns? Short stories? The possibilities are endless!) The very largest need, and easiest thing to do, is for active members to attend a local event. What an easy thing to do, to simply enjoy the company of like-minded folks! And best of all, you can attend something without being expected to volunteer for anything else. Just go and enjoy.

Upcoming Events

First Friday in Pensacola, L-o-n-g Lunch	September 5 11 a.m. - 1 p.m.	Lunch at Scenic 90 Café , 701 Scenic Highway, Pensacola. Drop in for a long visit if you can, a short one if you can't - no requirement to stay the full time. As you enter the restaurant, go to your right and to the rear.
Second Tuesday in Pensacola	September 9 6 p.m.	Supper Club in Pensacola at Hall's Seafood, 920 E. Gregory St., downtown Pensacola. Call Dan Murray on his cell phone, 455-6339, after 7 p.m. or on weekends please.
Second Saturday in Panama City	September 13 11:30 a.m.	Lunch at Chef Imondi's Downtown , 448 Harrison Ave, Panama City.
Third Friday	September 19 5 p.m.	Happy Hour! Happy Hour! Scoreboard Sports Bar and Grill, Siefert & Santa Rosa Blvd. Okaloosa Island.
Third Saturday	September 20 6:30 a.m.	Garage Sale & ExComm Meeting at the Russ's, 12 Corbin Court, Niceville
Last Friday in Shalimar	September 26 11:30 a.m.	Lunch at Shalimar Cheers Pub , 1270 North Eglin Parkway. It's at the back of a yellowish office building north of the courthouse, on that side of the street. Turn at the red-and-yellow sign and go through the parking area all the way to the back and to the right.
Last Saturday in Fort Walton Beach	September 27 2 p.m.	Newsletter Assembly and Games at the Mochan's.

ExComm Minutes ~ John Mochan

August 16, 2008

The meeting was called to order at 2PM. Attending were: John and Mary Ann Mochan, Bob and Lynda Ulrich, Jerry Hilbert, Bill and Sue Nichols, Mabel and Hal Loesch, and Cheryl Rothwell.

President: The ballots will be published in the September newsletter with an extra effort to get the paper and electronic versions out by September 1st. Members may vote by paper or email to the Chairman of the Election Committee, Bill Nichols at top2@cox.net. We will be participating in Mensa Testing Day on October 18th with tests in Pensacola, Fort Walton Beach, and Panama City.

Vice President: No Report.

Treasurer: See separate report.

Membership: We gained one. See separate report.

Editor: No report.

New Business: We are starting to plan for the February 13-15 ValenTime Regional Gathering in Destin at the Holiday Inn. All past Committee members and Officers have offered to continue in the same positions. We received an email offer from Tallahassee Mensa to assist with the Children's portion of the program and a discussion followed. No decision was made at the time since our Gifted Children's Coordinator had urgent business and could not attend this meeting.

Next Meeting September 20th in Niceville during the Garage Sale.

Meeting adjourned 2:15PM.

Mensa Milestones for August

Mensa Birthdays

- 2 James R Scholter
- 6 Robert Todd Glasure
- 6 Douglas L Mann
- 10 Jerry Gilbert
- 16 Artice L McGraw
- 16 Bobbye Sikes Wicke
- 18 Barbara Woolwine
- 20 M E "Buddy" Hall
- 21 Dean Emerson
- 22 Dale M Colemere
- 24 Micah Butler
- 26 Robert Ulrich



Mensa Anniversaries

- | | |
|-------------------------|----------------------|
| 32 Timothy D Sutton | 15 Brian T Halonen |
| 29 David F Howard | 8 Bobbye Sikes Wicke |
| 28 Tony Ray Gilligan | 4 Colin Babin |
| 26 Gretchen K Gilligan | 4 David L. Woodward |
| 21 James W Harris | 2 Ed Middleswart |
| 18 Lawrence Miles Wager | 1 Peter Griffiths |
-

2008 Arts and Design Society Competition

Northwest Florida Mensan Lars Runar took “Best in Show” and First Place for black and white photography in the Ninth Annual Fort Walton Beach Arts and Design Society Photography and Digital Arts Exhibition Awards. Lars has generously shared his work with us, and PensaMensa is pleased to present it to you here. Congratulations, Lars, on your well-deserved recognition.



*Left: “Calla Lily—
Cleopatra”*

Best in Show, 9th Annual ADSO Photography and Digital Arts Exhibition Awards.

Below: “Yaquina Head Lighthouse” First Place, Black and White Photography, 9th Annual ADSO Photography and Digital Arts Exhibition Awards.



The Gifted Child~ Deborah L. Ruf, PHD

Dr. Ruf speaks to her clients and her audiences about a number of topics. She uses handouts of both her own writing and articles from others to supplement and support the information she shares. Many have asked her, however, where they can find the information on personality, intellectual profiles, or gender differences in the classroom. Although much information is out there, it isn't always put into a form that is clearly about school adjustment. She has been actively arranging her calendar to allow more writing time so that she can pull many of these ideas together to share with clients and other interested readers. Here is the first of those mini-articles. Enjoy!



SCHOOL IS NOT REAL LIFE

Introduction

In the past year, I've started many of my speeches by asking my audiences to repeat after me as I state, "School is not real life!" They usually chuckle and don't say anything, and I then lean forward and say, "I'm not kidding. Let's all say it together. School is not real life!"

Everywhere we turn we are led to believe that school—and school success—is absolutely the most important thing during our children's childhood years. We are judged as parents according to how well our children perform in school, how well they behave, the grades they get, and whether or not we have taught our children how to "fit in" and do the work of getting good grades.

How many people recognize that "Best Practices" and "Standards" imply a one-size-fits-all approach to instruction that assumes that all children pretty much learn the same way, at the same speed, and at the same ages? How many of you are guilty of accepting and believing that one early task of the school years is to learn to get along with the other children their age? To whom does it occur that we really don't learn social skills from fellow 6-year-olds, especially those who may be our same age but are otherwise quite different from us?

When we grow up, do we choose jobs that hire only people our age? Do we rule out possible friendships because someone is a different age from us? I assert that teaching children by age makes about as much pedagogical sense as teaching children by height. Also, learning to follow directions and do what someone else tells you to do for 12 or more years does not lead to creative thinking or entrepreneurship, and yet our educational system is set up to allow teachers to grade our children on how well they comply, sit still, do the assigned work and turn it in, whether or not it makes any intrinsic sense for the individual child.

So, my subsequent columns will address many of the ways students vary from one another and how a good educational system would allow for these differences. It is my strongly held opinion that tweaking the current system is not the answer. Let's see if I make arguments and points that change more than a few minds.

--

*Deborah L. Ruf, Ph.D.
Educational Options
4500 Heathbrooke Circle
Golden Valley, MN 55422*

Northwest Florida Mensa Officers

President	John Mochan	616 Overbrook Drive Ft. Walton Beach, FL 32547	850-585-3194/585-5067 jmochan@cox.net
Vice President	Micah Butler	8196 Lode Star Drive, Pensacola, FL 32514	850-723-8305 mjb28@cox.net
Treasurer	Jerry Gilbert	700 Trowbridge Ave. Ft. Walton Beach, FL 32547	850-862-4800
Membership Officer	Robert Ulrich	7025 Pro Am Court Navarre, FL 32566	850-240-4471 top2@cox.net
Editor	Cheryl Cullison	7230 Keating Terrace Pensacola, FL 32504	850- 484-9784 pensamensaeditor@cox.net
Gifted Child Coordinators	Jill Russ	12 Corbin Court Niceville, FL 32578	jillsruss@yahoo.com
	Debi Dunkerley	3941 McClellan Road Pensacola 32503	850-469-4602 davendebi@cox.net
Panama City Coordinator	George Chancellor	7523 Coleridge Road Panama City, FL 32404	850-874-0154 georgec584@aol.com
Arbitrator/ Mediator and Test Proctor	Steve Brumm	Panama City, FL	850-747-3233 AD4WT@aol.com
S.I.G.H.T Coordinator & Test Proctor	Mabel Loesch	2140 E. Scott Street Pensacola, FL 32503	850-433-2358 mloesch@bellsouth.net
Test Proctor	Joanne Horne	641 Merioneth Court Ft. Walton Beach, FL 32547	850-315-0255 johorne@cox.net
Webmaster	Jill Russ	12 Corbin Court Niceville, FL 32578	jillsruss@yahoo.com

Northwest Florida Mensa Home Page: <http://www.nwflorida.us.mensa.org>

Special Interest Groups

Motorcycles SIG. Dan Mazzeo of Gulf Breeze is vetting the idea of a SIG for anyone having an interest in motorcycles (owning one is not a requirement). Contact Dan at onegoodengineer@aol.com or 850- 206-4213.

Photography SIG. Dan Murray in Pensacola (455-6339) found out there was no camera club anywhere near him, so he started one.

Pinochle SIG. Contact Bob Mundorff in Navarre at 850) 939-5882 or pinochledd@aol.com. He will coordinate dates/times/schedules and is willing to host the games. For beginners too.

Shooting SIG. Contact Bob Mundorff in Navarre at pinochledd@aol.com or 939-5882 to go shooting during the week at the Escambia River Muzzleloader's range - modern small arms allowed.



September 2008

Sun	Mon	Tue	Wed	Thu	Fri	Sat
	1	2	3	4	5 11:00 a. m. Looong Lunch at Scenic 90 Café. 701 Scenic Hwy., Pensacola	6
7	8	9 6:00 p.m. Supper Club in Pensacola, Hall's Seafood, 920 East Gregory St., Pensa-	10	11	12	13 11:30 a.m. Lunch at Chef Imondi's Downtown, 448 Harri- son Ave., Panama City
14	15	16	17	18	19 5:00 p.m. Happy Hour at Scoreboard Sports Bar and Grill, Siefert & Santa Rosa Blvd.,	20 6:30 a.m. Garage Sale & ExComm Meeting at the Russ's, 12 Corbin Court, Niceville
21	22	23	24	25	26 11:30 a.m. Lunch at Shalimar Cheers Pub, 1270 N. Eglin Pkwy, Shalimar	27 2:00 p.m. Fun and Games at the Mochan's
28	29	30				

Précis ~ Fraser Sherman**IT LOOKED GOOD ON PAPER ...**

SEEING LIKE A STATE: How Certain Schemes to Improve the Human Condition Have Failed by James C. Scott is a look at such land-management schemes as building Brazilia in the jungle ("It was a chance to implement architectural theories without the impediments pre-existing cities offered."), Soviet and Tanzanian efforts to reform agriculture through different forms of collectivization and endless attempts to impose "scientific" agriculture on the Third World ("Planting three or four different crops in the same field was a more effective use of the soil than monoculture, but it looked messy and disorganized to Western eyes."). Scott argues that all such schemes stem from a belief that centralized planning by Qualified Professionals ("The Soviet farm plan was worked out by twelve bureaucrats in a hotel room in Moscow.") can override all obstacles, in contrast to which argues that any successful plan needs the hands-on experience of facts on the ground ("Peasant farmers know that what works in one patch of soil won't apply to another; one of the failings of high modernity is that it assumes its theories will work everywhere under all circumstances.") though Scott's at pains to emphasize he's neither anti-science nor embracing folk wisdom as a miracle cure-all. Very interesting.

NUKESPEAK: Nuclear Language, Visions and Mindset, by Stephen Hilgartner, Richard C. Bell and Rory O'Connor is a Sierra Club antinuclear book from the early eighties chronicling how the government and the nuclear industry worked to convince us that nuclear power represented a bright, glorious future in which we'd have safe affordable power to cheap to measure, an ultimate weapon against America's enemies and the possibility of, say, damming the Straits of Gibraltar with a "peaceful nuclear explosion" to flood the Sahara ("Of course, we might lose Venice."). A lot of the nuclear history has been covered better since, but an interesting look at nuclear propaganda nonetheless.

Cryptograms ~ Jill Russ*Easy Level*

EPWYDE XR WXLY YWYCEUXCXET. AY BO DOE

QDBYUREPDB YWYCEUXCXET. AY QRY XE.

~IPTP PDNYWOQ

Challenge Level

The Challenge Level includes the "space" as part of the cryptogram. In other words, the letter R might actually be the space, and a space might be a letter. The end of each line of the cryptogram is the end of a word. Punctuation marks such as apostrophes, commas, and periods are not included.

_V_GYQS_FRAJFXAT_SXFNRAFMJ

GAG_FMJFXR_FZQWGAD_FXQFOQTQ

XAT_SXFXQFXR_FHAGKFBTAZ_

NR_G_FMXFT_AHJ

~_GMZAFEQSD



Seven Trivia Questions ~ Dr. Dan Finley

Questions:

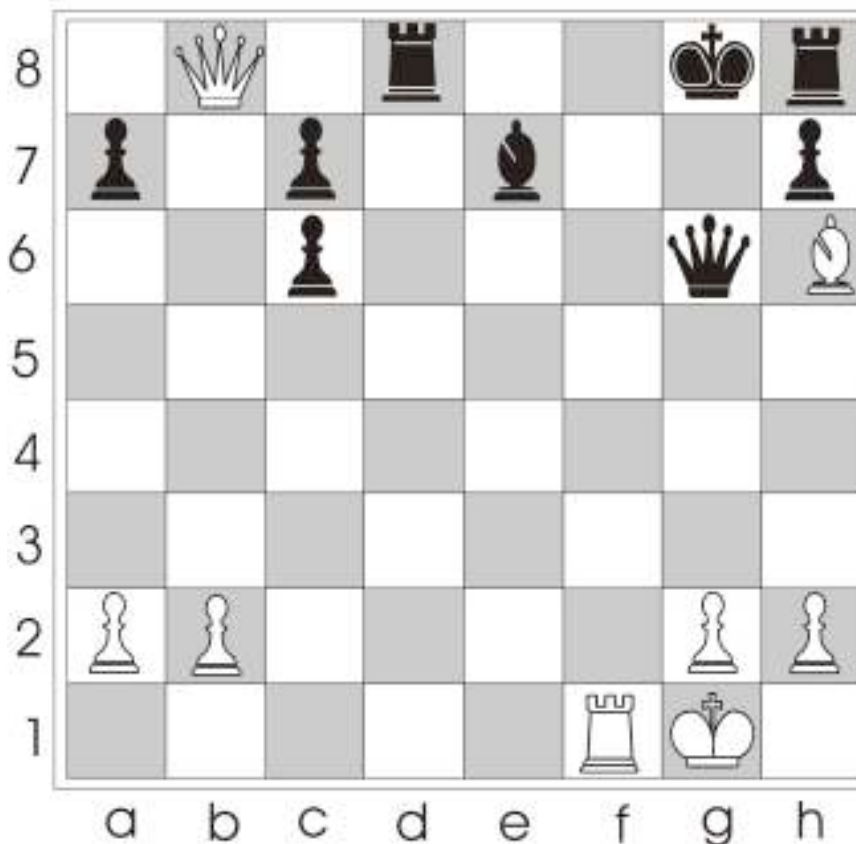
1. Crystalline or glossy in appearance, what principal form of rock is formed by the cooling of molten magma?
2. It's name in Greek means 'winged finger.' What is the name of this flying reptile of the Late Jurassic and Cretaceous Periods with a rudimentary tail and a beak with reduced dentition?
3. What chemical compound (KMnO₄) is a dark purple crystalline that is used as an oxidizing agent and disinfectant and is found in deodorants and dyes?
4. By what name is the western half of the island of New Guinea known?
5. By what name is the eastern half of the island of New Guinea known?
6. Death and the Maiden is a lied, an European romantic music composition, by what composer?
7. In order, who are the three most quoted writers in the English language?



Dr. Dan Finley is the Brain Bowl Coach & Health Sciences Professor, Gulf Coast Community College, Panama City. Dr. Dan invites you to submit a guest trivia question to dfinley@gulfcoast.edu for possible inclusion in future columns.

Chess Problem ~ Lars Runar

MATE IN THREE – WHITE TO MOVE



Reprinted, by permission, from Chess Training in 5333+1 Positions by László Polgár. ©1994 Könemann Verlagsgesellschaft.

SOLUTIONS**CRYPTOGRAMS**

Easy Level

Talent is like electricity--we do not understand electricity. We use it.~Maya Angelou

Challenge Level

Everyone has talent. What is rare is the courage to follow talent to the dark place where it leads. ~Erica Jong

SEVEN TRIVIA QUESTIONS

1. Igneous rock
2. Pterodactyl
3. Potassium permanganate
4. Western New Guinea or Western Papua; formerly known as Dutch New Guinea, it was incorporated into Indonesia in 1963
5. Papua New Guinea, an independent country since 1973 and formerly an Australian territory
6. Franz Schubert (1797-1828)
7. (1) William Shakespeare, (2) Alfred Tennyson, and (3) Alexander Pope

CHESS PROBLEM

1. Qd8 Qe8
2. Qe8 Bf8
3. Qf8 Mate

BALLOT**Northwest Florida Mensa ByLaws: Article 5.**

Ballots shall be printed in the September issue of the newsletter or mailed to all members of the local group, but in either case posted no later than September 1st. Ballots must be returned to the Chairman of the Election Committee and received no later than September 20. Ballots received after that date shall not be counted. Ballots may be returned by mail or in person. A plurality of valid votes cast for each office shall constitute election. Votes that are tied shall be determined by the Chairman of the Election Committee by a flip of a coin. The Chairman of the Election Committee shall certify the results of the election to the President and shall have the election results published in the next possible issue of the newsletter.

2008 Executive Committee Ballot

Vote for one for each office:

- | | | |
|-----------------------|--------------------------|---------------|
| President | <input type="checkbox"/> | John Mochan |
| Vice President | <input type="checkbox"/> | Micah Butler |
| Treasurer | <input type="checkbox"/> | Jerry Gilbert |

Please detach and mail to Bill Nichols, Election Committee Chairman, P O Box 882, Shalimar, FL 32579. You can also vote by email to top2@cox.net .

Please print and sign your name below

Name (please print) _____

Signature _____