

PensaMensa Newsletter

February 2007

- :: [President's Page](#)
- :: [ValenTime!](#)
- :: ["M"embership News](#)
- :: [Seven Trivia Questions](#)
- :: [ExComm Minutes](#)
- :: [The Tenth Story](#)
- :: [Calendar](#)
- :: [Goin' Roamin'](#)
- :: [Editor's notes](#)
- :: [Officers of Northwest Florida Mensa](#)
- :: [T-shirts are here. . .](#)
- :: [Milestones](#)
- :: [Answers to Seven Trivia Questions](#)
- :: [Précis](#)
- :: [ValenTime Program](#)
- :: [A Chess Problem](#)
- :: [Editorial Policy](#)



If you can't picnic and be serenaded on Rome's Spanish Steps, you can have just as much fun right here. Our picnics are free and delicious, and we've got song and dance and lots of other good stuff.
Photo of the Rome's Spanish Steps by Bob Ulrich - see Goin' Roamin'.

File your flight plan for ValenTime RG on the Gulf now - see the following. . . or just come on down.

We'll leave the light on for you.

President's Page

by **John Mochan**

As you read this, we are in the final preparations for our 5th annual ValenTime Regional Gathering. Our illustrious Registrar tells me that we should have 80 – 100 people attending this year. I hope you are one of them. The program is for a solid weekend of friends, food, fun, and a Midnight Howl at the Moon. How could you possibly miss out on that? Come on out and make some new friends. To everyone working so hard to put this together, “Thank You!”

As I write this, we are planning to attend Smarti Gras in Orlando January 26 - 28. We recently celebrated our 35th wedding anniversary and I'm planning a surprise for Mary Ann on the way home. I booked us a ride across central Florida in a hot air balloon. (Don't tell her about it if you see her.) We'll bring back some nice pictures to share. See you at the next event,

John

"M"embership News

by **Bob Ulrich**

Our Membership total took a baby step backward in December with a net roster loss of 2 members. Once again the “relo” bug bit us causing that net loss. Apparently fewer people want to or can afford to move to Northwest Florida. We had 3 losses and 1 gain for a drop of 2, so our new total is 198 members. Our 2006 total peaked in March at 210 then immediately dropped to the yearly low of 190 after the passing of the April 1 membership renewal date. From May through December our roster total has fluctuated between 193 and 200, a fairly tight range.

In December we had 2 folks move away, 1 member pass away, and one member rejoin. As was mentioned in last month's PensaMensa, longtime member (more than 20 years) Darlene Owens of Panama City has passed away. I am sure I speak for everyone who knew her when I extend my condolences to her surviving family and friends.

As to the relocations and rejoining it was definitely a month to keep up with the Jones since they all were. **Chris Ann Jones** moved from Pensacola to Gulf Shores, AL, and **Philip D. Jones** moved from Pensacola to Jacksonville, FL. Completing the Jones trifecta was **Raymond John Jones** of Shalimar who came back to Mensa after being gone for a while.

When you receive this newsletter our yearly gathering will be fast approaching. Many of you by now will have received an e-mail from me asking for help with the Friday Night Chocolate Orgy. I need dessert contributions and people willing to help serve (in the past this has been women in nice outfits). If I haven't contacted you and you are willing to help please e-mail or call me. I hope to see many of you there.

ExComm Minutes

by Heidi Daniels

The Executive Committee Meeting was held at Mabel and Hal Loesch's house on January 20, 2007. The meeting was called to order at 3:00 PM. Attending were: Heidi Daniels, Jerry Gilbert, Bob Horne, Mabel Loesch, John Mochan, Mary Ann Mochan, Bob Ulrich, Lynda Urlich, and Bobbye Wicke. John Mochan moved and Jerry Gilbert seconded that the minutes of the previous meeting be approved as published in the newsletter.

President: There are many member benefits available through American Mensa including discounts on magazine subscriptions, insurance, car rentals, office depot purchases, travel and more. Check the American Mensa website <http://www.us.mensa.org/> for details under the members section.

Vice President: no report.

Membership: See details in Membership Officer's Report.

Treasurer: National Mensa has increased our monthly allocation by \$0.10 per primary member and \$0.57 per secondary member.

Publications Officer: No report.

OLD BUSINESS

So far we have 24 registrations for the Regional Gathering in February. We are on track with registration volume compared to last year and expect a similar turnout of 70-80 people. T-shirts are in. We ordered 60 T-shirts with the break-even point at 26 shirts. We expect the shirts to be a hit and have sold 14 shirts thus far. Preparations for food and refreshments are on schedule. Half of the beer has been purchased including Miller Light, Corona, Corona Light, and Yuengling. We may add St. Paulie Girl.

NEW BUSINESS

The next yard sale will be April 28th at John and Mary Ann Mochan's house in Fort Walton. If you have donations or would like to volunteer for the event please call John Mochan at (850) 585-3194 or 585- 5067. Also, let John know if you need transportation for any donation.

The next ExComm meeting will be held at the Regional Gathering in Destin on Saturday, February 11th.

Adjourned at 4:06 PM.

The Tenth Story

RVC Column for Region 10

By the time you receive this, the 2007 Smarti Gras Regional Gathering in Orlando will be a happy memory, and it will be almost time for the 2007 Valente Regional Gathering in Destin. I hope we are seeing each other at at least one of those events, if not both.

If you have never attended an RG, this might be the year to give it a try! And then Tampa Bay Mensa's RG will be Memorial Day weekend.

I attended my very first RG one month after I became a member, and I have been a regular attendee ever since. If I go too many months without the camaraderie of an RG, I feel a kind of withdrawal.

What do I miss? Games? Speakers? Hospitality? Everything! But especially the conversation and seeing old friends, as well as the opportunity to make new friends from everywhere.

Have you ever thought about receiving your local group newsletter by email rather than by snail mail?

Many groups are considering offering that as an option. There are a lot of reasons this would be a good thing. First, it would save your local group money on the printing and mailing. Second, it would save a tree or two. Third, it would ease the burden of stress on those who ready the newsletter for mailing. And finally, you don't run the risk of your newsletter being either delayed or completely lost in the mail. (I honestly received a post office envelope containing a torn cover of the Gainesville group's newsletter from November. That was all - just a piece of the cover, which had my address on it. I received it in January!) So if your local group is thinking of offering the option of receiving your newsletters via email, if you are internet savvy, perhaps it is time to consider it. And if there is something in it that you really do want printed, you can print it out at home. I know that I will be opting to save my share of trees this way!

I was surprised to learn that many members do not take advantage of the many things available on the national website (us.mensa.org). If you haven't been there recently, perhaps you should check it out. I admit that I log in at least once a day, if only to the games page - love the Sudoku and the jigsaw puzzle! But you can keep track of what the AMC is doing, as first the agenda for upcoming AMC meetings are posted, and then after the meeting the minutes are posted. You can enter into all kinds of verbal exchanges on the Mensa Discussion Forums. You can find contact information for most Mensa members around the country in the Mensa Member Directory. The list goes on - why not take some time to explore YOUR national website?

Happy Valentine's Day!

Maggie Truelove, Regional Vice Chair, Region 10 > 3333 Honeysuckle Lane, Orlando, Florida 32812;

407-855-9078; truluvs@cfl.rr.com; rvc10@cfl.rr.com; rvc10@us.mensa.org

Calendar

Where no specific phone number is given, call 850-585-3194.

Friday, Feb. 2, 11 a.m. 1 p.m. First Friday in Pensacola, L-o-n-g Lunch at Scenic 90 Café, 701 Scenic Highway, Pensacola. Drop in for a long visit if you can, a short one if you can't. As you enter the restaurant, go to your right and to the rear.

Saturday, Feb. 10, 11:30 a.m. Second Saturday in Panama City. Lunch at Chef Imondi's Downtown, 448 Harrison Avenue.

Fri-Sat-Sun, Feb. 9-11, ValenTime RG! at the Holiday Inn, Hwy. 98, Destin. ExComm will meet Sunday morning.

Tuesday, Feb. 13, 6 p.m. Supper Club in Pensacola, Hall's Seafood, 920 E Gregory St downtown Pensacola. Call Dan Murray on his cell phone, 455-6339, after 7 p.m. or on weekends please.

Friday, Feb. 16, 5 p.m. Happy Hour! at Okinawa, telephone 244-0055, at 180 Eglin Parkway NE in Cinco Bayou, just south of Yacht Club Drive. There is a lounge and a rather large seating area in the front. Dave Howard is our coordinator - he and Tehane will be there at 5 p.m. Details: davehoward01@earthlink.net or 897-5702.

Friday, Feb. 23, 11:30 a.m., Last Friday in Shalimar. Lunch at Shalimar Cheers Pub, 1270 North Eglin Parkway: their # is 651-2740. It's at the back of a yellowish office building immediately north of the courthouse, turn at the red-and-yellow sign and go through the parking area all the way to the back

and to the right.

Saturday, Feb. 24, 2:00 p.m. Newsletter Assembly and Games - at the home of John and Mary Ann Mochan, 616 Overbrook Dr., FWB. Bring a snack or beverage, fold, staple, mutilate and stamp and get your newsletter early. Info: jmochan@cox.net or 585-3194.

Tentative March events: March 2, Lunch, Pensacola; March 10, Lunch, Panama City; March 13, Supper Club, Pensacola; March 16, Happy Hour, TBD; March 17, St. Paddy's Picnic and ExComm, Soundfront Park, Navarre; March 30, Lunch, Shalimar; March 31, Newsletter/Games Day, FWB

SPECIAL INTEREST GROUPS

Photography SIG. Dan Murray in Pensacola (455-6339) found out there was no camera club anywhere near him, so he started one.

Pinochle SIG. Contact Bob Mundorff in Navarre at 850) 939-5882 or pinochledd@aol.com .He will coordinate dates/times/schedules and is willing to host the games. For beginners too.

Shooting SIG. Contact Bob Mundorff in Navarre at pinochledd@aol.com or 939-5882 to go shooting during the week at the Escambia River Muzzleloader's range - modern small arms allowed.



Goin' Roamin'

Then back across the pond, by Bob Ulrich. Photo: Smart car parking in Rome.

In late October, my wife Lynda and I were fortunate enough to take a trip to Rome, spend 6 days at a Bed and Breakfast there, then cruise back for 16 days from Rome to Ft Lauderdale, Florida aboard the Carnival Liberty. If the name of the ship sounds familiar, some of you news buffs may remember the national stories about 700+ people on this cruise becoming infected

with the stomach flu called the norovirus. More about that next month in the second part of this story. This first part will focus on our time in Rome.

We flew to Rome from Miami instead of Fort Lauderdale because the airports are only about 30 miles apart and I was able to get a better airfare from the bigger airport. The flight to Rome via New York was uneventful and the New York to Rome leg was actually fairly empty with less than half the coach seats filled.

As those of you who have gone to Europe know, most flights are overnight “red eye” flights that arrive early in the European morning, which is even earlier according to your body time. Our trip was no exception. By the time we gathered luggage cleared customs and connected with the limo service it was 8:30 a.m. local time. A 45-minute car ride later we were at the bed and breakfast. I was surprised that at that midmorning hour of 9:15 a.m. the youngish manager (early thirties) commented on how early in the morning all the Americans arrive. The Italians definitely work on a later clock than I do.

The bed and breakfast, The Suite Oriani, is a ten guestroom converted residence located northeast of downtown Rome in a quiet residential and embassy area that is much more serene and peaceful than downtown. We came to appreciate this locale after days of riding the Metro and walking around the city center. As is typical of many European lodging places and more and more American inns, the Oriani served a continental breakfast. The breakfast was served everyday in the room by the maid because there was actually very little common area, no desk, no real lobby.

My impression of Rome as a city is one of a great many impressive churches and other old structures, but it was very busy, noisy and dirty in the downtown area. As is typical of older European cities, the streets are narrow and crowded. We mainly got around by taking Rome’s subway system, the Metro, and then walking from the stops to our destinations. There were 3 main subway lines, one more or less down the center and two others that crossed over. Metro tickets were inexpensive, a 7-day unlimited use ticket for subways and busses was 16 euros (about \$21 US dollars). The subway cars were sometimes only moderately full, but often we would be squeezed in like sardines. We never rode any buses - the subway system maps were fairly straight forward and easy to understand even if you don’t speak Italian, which we don’t. However, the buses made many turns and ran complicated routes and we weren’t certain we would get on the correct ones, so we walked a lot.

I was surprised to find that the historic places in old Rome were scattered throughout new Rome. I had kind of envisioned a separate old section apart from the newer construction, but all of the primary sites

are right in city center area. The Coliseum has streets leading right to it and another that circles it. It is big, impressive, and crowded with a long wait to get in. We walked all around the outside and were able to see in at a number of openings. We took a number of photos, but decide the wait to go in was just too long.

The ruins of the Forum were scattered over a much larger area than I expected. There were many columns, arches, partial walls, and excavated areas. No one particular spot was impressive, but taken as a whole it must have been extraordinary. The Pantheon is a huge domed structure that resembles a large auditorium or planetarium but is essentially a church. We arrived at this site on a Sunday morning and there was a service going on. Later we went inside, which was much more ornate and impressive than the outside.

Another day, we were exploring the city and came upon a wide set of stairs going from one city street up to a higher level group of stores and streets. It was midday and many people were sitting on the steps and eating. We had food with us and decided to eat there also. While we were eating, a roving church choir stopped and treated the large throng to a number of well-performed songs. We consulted our maps and discovered we were on the Spanish Steps, another local landmark, which explained the large crowd and singers. We then strolled to the Trevi Fountain, which is three-sided and backs up to a building. The scene there reminded me of a street fair with large crowds, assorted vendors, and some street performers, very hectic.

We visited the Vatican twice, first on November 1, the Roman Catholic holiday, All Saints Day. The Pope was giving a service in St. Peter's Basilica. There were huge crowds watching the service on four closed circuit TV feeds in St. Peter's square, which by the way is really expansive. Because of the holiday the Sistine Chapel and the Vatican Museums were closed. We returned later to tour St. Peter's Basilica. It by far the largest house of worship I have ever been in, easily 5-8 times larger than a large church. The lines to get into the Sistine Chapel and the Museums were blocks long and the wait looked like it would be hours. We passed. One thing I observed about the lines for the Vatican sites is they were unbelievably poorly controlled. There was a sawhorse line barrier for only the last quarter of the wait. And huge numbers of people had no compunction about jumping and cutting the line. Very annoying.

All in all, I enjoyed our time in Rome, although as I mentioned earlier they functioned later than I like. Most of the nicer restaurants don't even open for dinner until 8:00 p.m. When we would arrive shortly after 8:00 the place was empty until people started arriving at 9:15 to 9:45. Too late for me. The narrow streets caused many drivers to be very aggressive. Because of the limited parking there were about as many motor scooters as cars. And some of the cars were so small they could park perpendicular instead of parallel to the curb. Another general observation is that English is not widely understood or spoken. My wife does a little Spanish and I do a little German so we have had more communication success in other countries. The people were nice and the experience of another culture is always educational. Next month - the cruise back to the U.S.

ValenTime!

Northwest
Florida



A

February 9-11, 2007 (3 p.m. Friday thru noon Sunday) at the Holiday Inn, 1020 Hwy 98 East, Destin, FL.

great program planned for you - pack your most outrageous t-shirt for the Wit T-shirt Contest, your pirate costume, and your GPS - or just come on down and we'll outfit you!

All your favorite events are scheduled along with some new treats, and the best RG cuisine anywhere.

And you can take our smiling dolphins home with you on our 5th Anniversary t-shirt! Pre-order to be sure your size is available and waiting for you.

Registration is \$40 per person if paid by Feb 1, \$45 per person at the door, or \$20 per person for Friday night, \$35 for Saturday, and \$10 for Sunday. Please make checks payable to Northwest Florida Mensa.

Name(s) _____

Address _____

Phone _____

Email: _____

Please mail this form to: Registrar — ValenTime
616 Overbrook Drive, Fort Walton Beach, FL 32547- 3528
Contact: John Mochan - (850)-585-3194, jmochan@cox.net

Room rates: No Gulf view \$80; partial Gulf view \$85; full Gulf view \$115 Double occupancy. Add \$10 per extra person. Call the hotel at 877-837-6181 or 850- 837-6181 and tell them you are with the Mensa group.

Visit us at: nwflorida.us.mensa.org

Seven Trivia Questions

Dr. Dan Finley, Brain Bowl Coach & Health Sciences Professor, Gulf Coast Community College, Panama City.

Dr. Dan invites you to submit a guest trivia question to dfinley@gulfcoast.edu for possible inclusion in future columns.

1. In imperial units, what is the speed of light?

2. Seventy-five percent of the world's pineapples are grown where?
 3. By what name do the Romans refer to the Greek character, Odysseus?
 4. When playing the card game Poker, what is the worst possible hand that can be dealt?
 5. What is the total number of holes present in a typical Chinese checker board?
 6. What is the southernmost city on Earth?
 7. What is the coldest place on Earth?
-



Editor's notes

For trivia buffs: What do the crossed-out triangle and the no-parking sign below it mean in these laundering instructions?

And did you know that ValenTime goody bags will include special Valentine's Day trivia by Dan, new cryptograms by Jerry, and a dining guide by Morrie?

Free and Fast

Is there something you would like the Mensa group to know about and/or participate in? You can get a same-day message out through our email service.

Contact the editor at 862-2874 or .

Do more, find friends in the online member directory provided by AML. Visit www.us.mensa.org/directory for addresses (including email), occupations, interests; or update your statistical information and privacy releases at www.us.mensa.org/profile. You will need your membership number (on your mailing label on this newsletter) and the password from the current issue of the Mensa Bulletin (if you have a problem with this, call Membership Officer Bob Ulrich, 939-6870).

Scam of the week: Found under Help Wanted - Administrative:

"Office coordinator FT/PT with clerical exp. Some mailing, filing and typing req. Good communication skills. Top salary."

I called and got a recorded message from "Options" that their presently available jobs were part-time data entry on your home computer; stay connected if you're interested.

Against my better judgement, curiosity kept me connected for ten minutes, interrupted every 60 seconds by a message assuring me that my call was valuable and someone would be with me shortly, and then a sprightly female voice asked:

"Do you have a home computer? Can you type 20 to 30 words a minutes?" (Yes)

"Good," she said. "For a fee of \$85, we set you up with a local company that will pay you \$12 to \$17 an hour to do data entry at home. . ." I interrupted her instructions for sending the fee:

"Wait a minute," I said, "I pay you \$85 to set me up with a company that may or may not hire me. . ."

"Hold on a moment," interrupted sprightly female. CLICK.

Recorded male voice: "At this time we are not hiring any positions."

We need to dig up Diogenes and clone him.

Officers of Northwest Florida Mensa

President: John Mochan (850) 585- 3194; 585-5067; 616 Overbrook Dr., Fort Walton Beach, FL 32547-3528; jmochan@cox.net

Vice President: Heidi Daniels (850)433- 1465; 221 Cevallos St. Pensacola, FL 32503; hsdaniels@gmail.com

Treasurer: Jerry Gilbert (850) 862-4800; 700 Trowbridge Ave., Ft. Walton Beach, FL 32547

Membership Officer: Robert Ulrich (850) 939-6870; 7025 Pro Am Ct., Navarre, FL 32566
bulrich@mchsi.com

Editor: Bobbye Sikes Wicke (850) 862- 2874; P.O.Box 252, Mary Esther, FL 32569;

Northwest Florida Mensa Home Page: <http://www.nwflorida.us.mensa.org>

Arbitrator/Mediator and Test Proctor: Steve Brumm (850) 747-3233; Panama City, FLAD4WT@aol.com

Gifted Child Coordinator: Jonathan Miller (850) 939-9785; 8214 Riverside Landing Way, Navarre, FL 32566; jonathan.miller7@mchsi.com

Panama City Coordinator: George Chancellor (850) 874-0154; 7523 Coleridge Road, Panama City, FL 32404; georgec584@aol.com

S.I.G.H.T Coordinator & Test Proctor: Mabel Loesch (850) 433-2358; 2140 E. Scott St., Pensacola, FL 32503-4957; mloesch@bellsouth.net

Test Proctor: Joanne Horne (850) 315- 0255, 641 Merioneth Ct., Ft. Walton Beach, FL 32547; johorne@cox.net

Webmaster: Jill Russ (850) 678-9169, 12 Corbin Ct., Niceville, FL 32578; jillsruss@yahoo.com.

T-shirts are here. . .

Pre-order your RG t-shirt now to be sure the right size is there for you. Good quality white 100% cotton with the unique red and grey design, \$12 each.

Circle size(s): M L XL XXL

of shirts: _____

Name _____

Phone _____

email _____

Please phone, e-mail, or mail your order to John Mochan at 585-3194, jmochan@cox.net or 616 Overbrook Drive, FWB 32547. Please make checks payable to Northwest Florida Mensa. You will be notified when the shirts arrive, or you can pick yours up at the RG.

Milestones

Mensaversaries: As of this month, the following Mensans have maintained continuous membership in American Mensa Ltd. for the years shown. These anniversaries may not accurately reflect the total number of years in Mensa if a break in membership for one or more years has occurred.

26 Henry Floyd Pruitt Jr.

9 Suzanne Bratton

7 Robert M. Baucom

7 Bryan Clark

5 Richard A. Clinchy III
5 Richard Henson
4 Jonathan Muldoon
2 George 'Michael' Domning
1 Linda Binion
1 Kermit Hemmert
1 Carey Huff

HAPPY FEBRUARY BIRTHDAYS!

3 Lyle Kent Burkhart
4 R.A. Isaacs
5 George 'Michael' Domning
7 Steven Brumm
9 Robert Prescott Keller
10 Tom Russ
12 David F. Howard
14 Jennifer Watson
19 Tara Taylor
19 Suzanne K. Zoss
20 Philippe Petit

If your birthday isn't listed, it's because it is not on the membership roster we get from the national office each month - and that's because you instructed National to withhold it. Please go to us.mensa.org and change your listing (or write to the address in your Mensa Bulletin, or call them). We promise not to tell anyone how old you are.

Answers to Seven Trivia Questions

1. Converted to imperial units, the speed of light is approximately 186,283.397 miles-per-second, 670,616,639.384 miles-per-hour or almost one-foot- per-nanosecond.
2. Hawaii
3. Ulysses
4. Ace, 2, 3, 4 and 6; if you said Ace, 2, 3, 4 and 5, that is a straight and a potentially winning hand
5. 121--Ten each in the six playing triangles and sixty-one in the center spaces
6. Ushuaia, located on the southern coast of the Tierra del Fuego island, in Argentina. The population is about 50,000.
7. Antarctica. In 1983, at the Russian research base Vostok, the record-cold temperature was -129oF. The average annual temperature at Vostok is -67oF; the temperature there has never been above 0oF. Antarctic, in Greek form, translates to "opposite to the Arctic." Arctic, in Greek form, translates to "bear" and is a reference to the North Star, or Polaris, which is in Ursa minor. The name Antarctica was originally used more than 2,000 years ago - well before any human discovery of Antarctica. The idea that Earth was a sphere was accepted by many of the "thinkers" of this time. One of these "thinkers,"

Aristotle, postulated that a great land mass had to exist in the southern hemisphere in order to balance all the land in the northern hemisphere. He called this southern land mass "Anti-Arctos," the counterpart to Arctos (the prominent constellation of the northern hemisphere - the Great Bear).

Précis

Fraser Sherman

Famous Bible figures and the stories behind them.

THE BIRTH OF SATAN by T. J. Wray and Gregory Mobley takes familiar information--that the Satan we know today is far different from the way the figure first appeared in the Old Testament--and does a very good job going into the details by which the "hassatan," who plays adversary to Balaam and Job became the serpent in Eden, corrupter, tempter and Lord of Hell. Despite some overreach in discussing Satan's influence on pop culture, a very good job.

PETER, PAUL AND MARY MAGDALENE by Bart Ehrman is a much dryer read as Ehrman scrapes together what we know of three of Jesus' best known followers ("Mary Magdalene doesn't actually appear much in the Gospels, but people understandably find her more interesting than, say, Simon."), what we can plausibly deduce from the written record, and which part of the record should probably be ignored (several of Paul's letters are considered by historians to be written by someone else). Informative, despite the dryness, though very heavily influenced by Ehrman's view of Jesus as a prophet of the apocalypse.

ValenTime Program

Friday

3:00 Registration and Games Room open

6:00 **Dinner**

8:00 **Chocolate Orgy** (Bob and Lynda Ulrich)

9:00 **GenX Meeting** (Heidi Daniels)

Hearts Tournament (Bob Osterman)

10:00 **Werewolf Game** by Jolie Elder. *In this psychological game, a group of townfolk are pitted against werewolves hidden amongst themselves. Can you determine who is acting innocent without becoming the next victim?*

Saturday's Events

6:00 Coffee/Breakfast etc.; Games room opened.

9:00-10:00 **DMAT Disaster Medical Assistance Team** by Gary Kruschke, Team Commander

10:00-11:00 **The Great Pumpkin Massacre** by Steve and Lorne Brumm. *Improvised weapons actually made by inmates behind the prison walls meet blocks of clay and pumpkins. See the horrific results and marvel at the ingenuity of the inmates. This program has been selected to be presented at the American Academy of Forensic Sciences Annual Meeting later in February.*

11:00-12:00 **Geocaching** by Heidi Daniels and Cameron Pouncey

12:00-1:00 **Lunch; Book signing by local authors** in the hall between Games room and Hospitality.

12:30-1:00 **Wit T-Shirt contest** in Games Room - Arthur Cartwright

1:00-2:00 TBA

2:00-3:00 **Vampires in Folklore and Fiction** by Fraser Sherman. *Why did vampire beliefs evolve?*

How do fictional vampires differ from folklore? A history of vampire beliefs, movies, books, and more.
 3:00-4:00 **Sex Seance** by Ike and Stormie Kullman

4:00-5:00 **Yoga/Meditation** by Swami J.

5:30-7:00 **Indoor Picnic**

7:30-8:00 **Rum Tasting** by Bob and Lynda Ulrich

8:00 -9:30 **Pirate's Dance** - Music and DJ by Micah Butler; Beth will sing, we will dance.

9:30-10:00 **Pirate Contest and Costume Contest**

10:00-12:00 **Dance Continues**

Midnight **Howl at the Moon**. Meet outside by the flag pole that has the Pirate on it.

Sunday's Events

6:00 **Coffee/Breakfast**

8:30 -9:00 **ExComm Meeting**

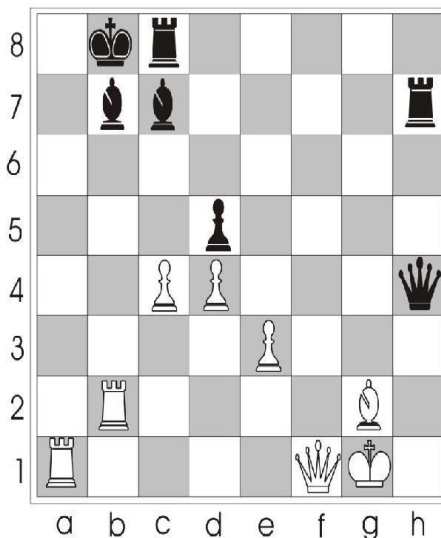
9:00 -9:30 **RVC Talks**

9:30-10:00 **Awards/ Upcoming RG's**

10:30 **Auction begins**

Extra Events going on this weekend: paper games, t- shirt sale, book sale.

MATE IN THREE - WHITE TO MOVE



A Chess Problem

from Lars Runar

January Solution:

1. Na5 Qa5
2. Rc3 bc3
3. Na3 Mate

Reprinted by permission from Chess Training in 5333+1 Positions by Laszlo Polgar © 1994 Konemann Verlags gesellschaft

Editorial Policy

PensaMensa welcomes your articles and artwork!! Submissions must show name, address, phone, and may be edited for clarity and space. Please enclose an SASE if you want your material returned. Deadline for submission is the 15th of each month.

PensaMensa is the official newsletter of Northwest Florida Mensa. Opinions expressed are those of the contributors and not necessarily those of any Mensa group or its officers. Mensa is a not-for-profit international society, whose sole requirement for membership is a score at or above the 98th percentile on any of a number of standard IQ tests. Please contact one of the Test Proctors (see Officers) for testing in Northwest Florida.