

# PensaMensa Newsletter

March 2007

- :: [President's Page](#)
- :: [RG Memories](#)
- :: ["M"embership News](#)
- :: [Seven Trivia Questions](#)
- :: [ExComm Minutes](#)
- :: [The Tenth Story](#)
- :: [Op-Trivia](#)
- :: [Calendar](#)
- :: [Bulletin from David Luther Woodward](#)
- :: [ValenTime 2007: How goes it](#)
- :: [Editor's notes](#)
- :: [Officers of Northwest Florida Mensa](#)
- :: [Milestones](#)
- :: [Answers to Seven Trivia Questions](#)
- :: [Précis](#)
- :: [From Christine Pincince](#)
- :: [Thanks to our 2007 Chocolate Orgy Contributors](#)
- :: [A Chess Problem](#)
- :: [Editorial Policy](#)



Clockwise from upper left: GenExers kep the RG rockin' and rollin'; Steve Brumm's Great Pumpkin Massacre; Dana and Andy demonstrate Hapkido; Sex Seance by Ike and Stormie. *Photos by Fraser Sherman.*

## **March 17, 2:00 - Picnic and ExComm meeting at Navarre Soundfront Park**



Join your fellow Mensans for a Picnic at the Soundfront Park in Navarre on Hwy. 98 located between the Navarre Beach Causeway and State Road 87. Bring your picnic offering to share and favorite beverage. If you don't want to cook, you can easily buy something close by. On Hwy 98 within a short

distance of the park there are many food emporiums: MacDonalds, Burger King, KFC, Church's Fried Chicken, Pizza Hut, Taco Bell, and a Winn-Dixie with a deli. So come on out and enjoy what is hopefully a nice spring day.

~ *Bob Ulrich*

# President's Page

by **John Mochan**

On behalf of Northwest Florida Mensa, we wish to thank everyone who attended this year's RG. It was wonderful.

We would personally like the opportunity to tell Heidi Daniels and Cameron Pouncey and the rest of the GenXer's, what a wonderful job they did and to thank them for pitching in and helping this year. They were presenters and decorated the room for the dance. It made things go a lot easier. Also thank you to Micah Butler for the music with Beth Brooks, Dana Schack, and Andy Snyder. And Heidi Daniels and Cameron Pouncey for presenting, and Terri Culbertson for making the Bingo game. If I've left someone out, thank you, too. The RG Committee did a great job again this year, so thank you. Thank you also goes out to the wonderful servers during the Chocolate Orgy: Lynda and Bob Ulrich, Marya Bard, Jill Russ, Joanne Horne, Heidi Daniels and Terri Culbertson. Bob Horne gets a great big thanks for his part in providing us with food and drinks in the hospitality room; Mabel Loesch, thank you for the Jambalaya and Bob and Lynda Ulrich for the pasta dishes. Jerry Gilbert, thanks for the use of the trailer and your muscles. Bobbye Wicke, thanks for the printing of the program. Thanks to Dave Howard for supplying the equipment to make the presentations possible.

See you at the next event,  
John and Mary Ann Mochan

---

## "M"embership News

by **Bob Ulrich**

The group had a roster gain of 2 members in January. The gain matched the loss in December so we are back to the total of 200 members that we had at the end of November. During 2006 our total membership varied from 190 to 210, which averages 200 members, which is exactly where we are now for whatever that is worth.

From the move-in move-out standpoint we broke even. One member, Sean Dobbs, moved out (from Santa Rosa Beach, FL to Land O Lakes, FL). And one member, Richard De Lorenzo, moved into our area (from an Army post office box address in the Pacific area, possibly Guam, to Niceville, FL).

Two members reinstated their Mensa membership. XXXXX who lives in Santa Rosa Beach renewed after being gone since last April and Larissa Timper rejoined after a longer absence. Welcome back to Mensa to both of you.

A personal note of thanks goes out to all of you who donated goods or time to make my job easier as the overseer of the Friday night Chocolate Orgy at this years ValenTime Regional Gathering. The selection was outstanding once again and probably way too many calories were consumed. A list of all the donations can be found elsewhere in this newsletter.

---

# ExComm Minutes

by **John Mochan**

The meeting was held on the last morning of this year's ValenTime Regional Gathering in Destin. We were called to order at 8:39. Attending were: John Mochan, Bob and Lynda Ulrich, Jerry Gilbert, Mabel Loesch, Joanne Horne and Bob Cox. John moved and Jerry seconded to accept the previous minutes as published in our newsletter.

**President:** We have had some conflict of events recently which causes members to choose one event over the other. With better scheduling, more people would be able to attend both events. We will watch for this in the future and discourage it as much as possible.

**Vice President:** No report.

**Editor:** No report.

**Treasurer:** Our new balance is \$4,617.09. Jerry is investigating a savings account with a higher interest rate. A full report on the finances of the RG is in a separate article.

**Membership:** We are back to 200 once again. See separate Membership article.

**Mabel Loesch:** The scholarship judging was completed this year by Mabel, Bobbye Wicke, and Jerry Bradshaw. Results will be published later.

**New Business:** We had 74 people attend the RG. We made money and had a lot of fun. We look forward to another great event next year.

Next meeting will be March 17th at the Soundfront Park in Navarre at 2PM.  
Adjourned at 8:54.

---

## The Tenth Story

### RVC Column for Region 10

Thank you, Region 10! I am reelected due to there being no opposing candidate. You sure make it easy for me!

In case you haven't heard yet, at the January AMC meeting, a motion was passed that will give local groups 10 cents more per member per month, as well as 57 cents more per second member in the household per month. And did I mention that there are no strings on how the local group uses their funds? I am very proud of this motion passing, as I was on the Local Group Funding Task Force that worked for many months, examining local group finances and whether or not local groups needed more money and so on. I am also proud of the AMC for approving our motion.

Another issue that came up before the AMC at the January meeting is the Local Group Charter. This motion was tabled until March for a couple of reasons. First, many on the AMC felt that the wording needed some polishing. Second, and perhaps more importantly, some of us felt that the concept of the Local Group Charter needed to be clarified for the membership, some of whom have expressed that they felt it was a move toward control by the AMC. And that's not what it is, at all. In actuality, the

Local Group Charter is just codifying the relationship that is already in place between national and local groups. It explains what is expected of the local group and what is expected of national. In my opinion, this would be especially useful each time a new LocSec takes office. It would give them a blueprint to follow. If you are unsure of that, I think you will be able to download a copy from the national website and read it for yourself.

If you missed Smarti Gras and ValenTime this winter, you may be well into RG withdrawal. But take heart, because the Tampa Bay ARRR RG is approved and on the calendar. It is coming up on Memorial Day weekend. And while we are talking RGs, Broward Mensa's RG - FLoRanGe a trois - is moving . . . from October to Labor Day weekend! Just think, two three- day RGs in a row! What more could a region want?

March 25-26 is the next AMC meeting. As always, the agenda for that meeting will be available on the national website for you to read. If you have comments to share about any of the issues coming before the board, please do email or call me or another AMC member.

**Maggie Truelove, Regional Vice Chair, Region 10** > 3333 Honeysuckle Lane, Orlando, Florida 32812;  
407-855-9078; truluvs@cfl.rr.com; rvc10@cfl.rr.com; rvc10@us.mensa.org

---



## Op-Trivia

by Dave Howard

*Dave Howard challenged last month's Trivia column and submits that Hawai'i now produces only about 2% of the world's commercial pineapple*

The growth of labor unions in Hawai'i was the primary impetus for the decline of sugar and pineapple, in my opinion.

A fact not generally known is that César Chávez wasn't the first to organize agricultural labor in the US. That distinction belongs to the Sugar and Pineapple industries in Hawai'i, which were totally

organized right after World War II by the International Longshore Worker's Union (ILWU). The ILWU expanded from longshoremen to agriculture under the leadership of Jack Hall and Harry Bridges, both of whom were singled out by "Tail gunner Joe" McCarthy as Communists, which both admitted to being.

That was coupled with the consequences of the GI Bill, which gave former plantation laborers with military service during WW II an opportunity to go to college. Among those were current Senator Dan Inouye, and former Senator Sparky Matsunaga, both veteran's of the 442nd Regimental Combat Team (about which the movie "Go For Broke," starring Van Johnson, was made). These former GI's and labor supporters became the major influences in Hawai'i after the elections of 1952, and became even more firmly entrenched after statehood in 1959. Coming from the laborer's camps gave made them very supportive of labor unions.

I was a member of the ILWU as an employee of Libby, McNeill and Libby. My Grandfather was a

carpenter and also a member of the ILWU on the Lihue Sugar Plantation on the island of Kaua'i, where we lived with him during WWII.

In retrospect, I think the growth of the unions doomed Hawai'i's agriculture, as it made it more profitable to go to South America and Asia where land and labor was cheaper.

The impact of agricultural unionism, both positive and negative, is a very interesting issue, particularly when viewed from the perspective of a closed economy as in Hawai'i

---

## Calendar

Where no specific phone number is given, call 850-585-3194.

**Friday, March 2, 11 a.m. 1 p.m. First Friday in Pensacola, L-o-n-g Lunch at Scenic 90 Café**, 701 Scenic Highway, Pensacola. Drop in for a long visit if you can, a short one if you can't. As you enter the restaurant, go to your right and to the rear.

**Friday, March 9, 5 p.m. Happy Hour! at Tacueria's**, 209 Main St., Destin, co-located in the rear with the Destin Meat Market. Dave Howard is our coordinator - he and Tehane will be there at 5 p.m. Details: davehoward01@earthlink.net or 897- 5702.

**Saturday, March 10, 11:30 a.m. Second Saturday in Panama City. Lunch at Chef Imondi's Downtown** , 448 Harrison Avenue.

**Tuesday, March 13, 6 p.m. Supper Club in Pensacola, Hall's Seafood**, 920 E Gregory St downtown Pensacola. Call Dan Murray on his cell phone, 455-6339, after 7 p.m. or on weekends please.

**Saturday, March 17, 2 p.m. Picnic and ExComm meeting at Navarre Soundfront Park.** Bring a picnic offering to share and your favorite beverage (see page 1). Info: Bob Ulrich, bulrich@mchsi.com or 939-5870.

**Friday, March 30, 11:30 a.m., Last Friday in Shalimar. Lunch at Shalimar Cheers Pub**, 1270 North Eglin Parkway: their # is 651-2740. It's at the back of a yellowish office building immediately north of the courthouse, turn at the red-and-yellow sign and go through the parking area all the way to the back and to the right.

**Saturday, March 31, 2:00 p.m. Newsletter Assembly and Games** - at the home of John and Mary Ann Mochan, 616 Overbrook Dr., FWB. Bring a snack or beverage, fold, staple, mutilate and stamp and get your newsletter early. Info: jmochan@cox.net or 585-3194.

**Tentative April events: April 6, Lunch, Pensacola; April 10, Supper Club Pensacola; April 14, Lunch, Panama City; April 20, Happy Hour, TBD; April 21, ExComm, FWB; April 27, Lunch, Shalimar; April 28, Newsletter/Games Day, FWB**

### SPECIAL INTEREST GROUPS

**Photography SIG.** Dan Murray in Pensacola (455-6339) found out there was no camera club anywhere near him, so he started one.

**Pinochle SIG.** Contact Bob Mundorff in Navarre at 850) 939-5882 or pinochledd@aol.com .He will coordinate dates/times/schedules and is willing to host the games. For beginners too.

**Shooting SIG.** Contact Bob Mundorff in Navarre at pinochledd@aol.com or 939-5882 to go shooting

during the week at the Escambia River Muzzleloader's range - modern small arms allowed.

Active Mensans of all ages, including children and grandparents, are invited to join the Club Med SIG of American Mensa for a week of beach sports and fun at the Cancún Club Med starting Saturday, April 21, 2007. Sports include sailing, windsurfing, water skiing, flying trapeze, tennis, salsa dancing, snorkeling, beach volleyball, and kayaking. All sports equipment, lessons, French/Mexican meals, and drinks are included in the room price of \$150 (p.p.D.O.). (For 10% off the listed room rate, call Mill Travel at 1-800-2HandsUp.) Just bring your swimsuit and passport. Meet the Mensa group Saturday evening in front of the main restaurant in Club Med at 7:25 P.M. for dinner, followed by a week of active fun and sports. Details are on the SIG website at [www.MensaClubMed.org](http://www.MensaClubMed.org). Contact Erica Byrne, SIG coordinator, at [EMByrne@attglobal.net](mailto:EMByrne@attglobal.net) with any questions and/or to receive the latest SIG newsletter. Registration is free.

Carolinah RG 007 – License to Thrill! Spartanburg, South Carolina - May 4-6, 2007

An RG for your fun only, and hospitality from Carolinah with love! Join us in May at a spectacular new location in Spartanburg, SC, just up the road from Greenville.

As always, we will have plenty of good food, friendly people and great programs! Dance another day at our Thunderball masked ball, with live music from the same great band we had last year. Bond with friends old and new. Fill your belly with good meals. Revel in our famous hospitality. Nobody does it better!

Registration: \$49 to Dec. 31; \$55 to Mar. 31; \$65 to Apr. 30; \$70 after May 1. Includes all programs, Saturday lunch and deluxe Sunday brunch in the Blue Ridge Café, plus all other meals in RG Hospitality.

Registrar: Mary Ann Cox, 509 Bethel Drive, Mauldin, SC 29662-1840; Phone: (864) 963-2335 email: [maryacraig@juno.com](mailto:maryacraig@juno.com)

---

## Bulletin from David Luther Woodward

The Pentagon announced today the formation of a new 500-man elite fighting unit called **The United States Redneck Special Forces (USRSF)**.

These FLORIDA boys will be dropped off into Iraq and have been given only the following facts about terrorists:

1. The season opened today.
2. There is no limit.
3. They taste just like chicken.
4. They don't like beer, pickups, pork, country music or Jesus.
5. They are directly responsible for the death of Dale Earnhart.

The Pentagon expects the problem in Iraq to be over by Friday.

---

## ValenTime 2007: How goes it

### Postmortem by Treasurer Jerry Gilbert

While doing the final totals of our financial condition after our '07 RG, I thought that some of you folks that were unable to attend would like a recap. Hopefully this will keep me on the good side\* of

our hardworking, award-winning editor. My selfish reason is so she may recognize that my noted O.C.D. tendencies (I prefer to call it C.D.O since it sounds better when alphabetically correct) may have some benefits to our organization.

All the workers showed up at 1:00 p.m. Friday and started setting up the decorations, tables, coolers, food, etc., followed shortly by the first arrivals of the guests. It seemed to go much faster than last year - maybe there's some truth in the old parable, "Practice makes perfect, or at least passable."

After set-up, food rapidly appeared along with a great variety of drinks. This was followed by our absolutely "best yet" Chocolate Orgy put on by our local addicts of the cacao plant. Since I write the checks, I accumulated a list of what was available to our guests:

The area was continuously filled with numerous dishes of veggies and/or crackers with a variety of dips, cheese, chocolates, M&Ms, cashew and peanut bowls, grapes, Doritos, and chips. To wash the snacks down, flavored waters, teas, coffee and juices were always on the drink tables. Seven meals were served with more than enough for the 74 guests, including delicious home-cooked meals by the Loeschs and Ulrichs.

The four bottles of Rum were donated by the Ulrichs for the "Rum Tasting." They also provided the Bloody Mary medications. Along with much of the food, our other libations (or lubrications) were gathered over four weeks by our Super Shopper Bob Horne, and included: 5 cases (180 bottles) of water; 15 cases assorted brands of beer; 42 liters of 4 different wines; 20 liters of Blood Marys.

Whatever the reason, I really didn't hear any complaints and most everyone seemed to have a great time.

After such a spread, I really had to wonder what effect it would have on our bank account. Big surprise!! We managed to clear \$344 over our total cost of \$2,147 for a profit of a hair over 16% on our event. It's really amazing what you can do with hard-working free labor.

However, when I mentioned the 16% profit to our leader and suggested that we should do this several times a year, his comments, while quite loud, did not seem very enthusiastic.

---

## **RG Memories**

**by Fraser Sherman**

Our fifth ValenTime was, I think, the most fun we've had so far. At least the most fun I've had. And so, since I'm not inclined to take an objective look at anything so fun, I will run through my personal memories of the highlights:

- Having Dana use her hapkido blue belt skills to put me in a joint lock (hey, I was curious).
- Eating lots and lots of very good chocolate. I know, what a surprise.
- Seeing a half-dozen Mensans use improvised prison weapons to mutilate a pumpkin. Amazingly, the pumpkin proved pretty tough.
- Seeing Bob and Mary Ann, Beth and Nick, Jolie and Doug and other friends from out of the area.
- Delivering my lecture on vampire folklore and fiction.

- Meeting newbies, such as Tracy and Saskia from Mobile.
  - Discovering that Werewolves of Millers Crossing, the game Jolie ran for us Friday night, is pretty funny when half the players are drunk—though it also made the werewolf hunt rather non-linear. And why is it the only time the werewolves lost was when I played one of the werewolves?
  - Beth sings!
  - Chocolate!
  - Coming in second in reciting pi (to Chris, at 82 places)—after Jolie recited it to 55 places, I realized with glee I had one more digit in my head. Of course, Nick can do 160 digits, so that puts us all in our place.
  - Discovering (during a conversation on knitting between Sue and Jolie) that there's a wool made from musk ox hair.
  - The sex seance! Weird questions and really . . . interesting prizes. I won't mention what I won . . .
- Kudos to everyone involved, particularly the people who did the unglamorous stuff like organizing and crewing hospitality.
- 

## Seven Trivia Questions

**Dr. Dan Finley, Brain Bowl Coach & Health Sciences Professor, Gulf Coast Community College, Panama City.**

Dr. Dan invites you to submit a guest trivia question to [dfinley@gulfcoast.edu](mailto:dfinley@gulfcoast.edu) for possible inclusion in future columns.

*Correction #1 from the February 2007 Column:* Thanks to Dave Howard, who corrected my error in which I stated that 75% of the world's pineapples were grown in Hawaii. I had read that in an old trivia book and failed to verify it by checking newer numbers. *Mea maxima culpa.* Land prices and the cost of labor have dramatically reduced Hawaiian pineapple production. Thailand, the Phillippines and Brazil now lead the world pineapple production. Two more interesting tidbits about pineapples, (a) they are the only bromeliad fruit in widespread cultivation and (b) they are thought to be native to Brazil or Paraguay and were introduced to Hawaii by the Spanish.

*Correction #2:* Thanks to Rick Boswell who corrected my error in which I stated that the Ace, 2, 3, 4 and 5 is the worst hand in poker. I, of course, should have pointed out that they needed to be unsuited, or otherwise, the hand would have been a flush. Furthermore, according to Rick, the Ace in many games of poker is actually high instead of low. Rick says that the worst hand in poker is 2, 3, 4, 5 and 7 unsuited.

1. What is the most populous nation in which automobiles are driven on the left side of the road (steering wheel on the right)?
2. What is the most populous nation in which automobiles are driven on the right side of the road (steering wheel on the left)?
3. What is the only US property or territory in which automobiles are driven on the left side of the road?

4. At the beginning of the film, Rocky Horror Picture Show (1975), what was the inspiration for the memorable 'singing lips'?
  5. What was Man Ray's birth name?
  6. Who is the first and only person to have their remains buried on the Moon?
  7. What was the name of the airplane that was flown by the lead character in the American radio and television series of the 1940s and 1950s, Sky King?
- 

## Editor's notes

### and news from all over

The only casualty reported at ValenTime was Tom Russ, taken home just before Saturday's picnic with flu-like symptoms. Jill left his surprise birthday cake for the rest of us to enjoy - and we did!

**Did you know that Phillip Woolley won the Exit Realty NFI Chili-Cook-Off last November.** . .34 teams. What do you think about a NWF Mensa Chili Cook-Off, open to the public in a park, as a fund raiser? We certainly have some fine cooks and organizers.

**Book Signings: Saturday, March 10**, Bobbye Sikes Wicke at the 2007 Triple-B Blackwater, Bluegrass & Bar-B-Que Cookoff on Crestview's Main Street, 9 a.m.-7 p.m.

**Saturday, March 17, 2-3:30 p.m.**, Bobbye Wicke at Barnes & Noble, 1200 Airport Blvd., Pensacola. Do come by, if just to say hello and lend moral support!

### Free and Fast

Is there something you would like the Mensa group to know about and/or participate in? You can get a same-day message out through our email service. Contact the editor at 862-2874 or .

**Do more, find friends in the online member directory provided by AML.** Visit [www.us.mensa.org/directory](http://www.us.mensa.org/directory) for addresses (including email), occupations, interests; or update your statistical information and privacy releases at [www.us.mensa.org/profile](http://www.us.mensa.org/profile). You will need your membership number (on your mailing label on this newsletter) and the password from the current issue of the Mensa Bulletin (if you have a problem with this, call Membership Officer Bob Ulrich, 939-6870).

---

## Officers of Northwest Florida Mensa

**President:** John Mochan (850) 585- 3194; 585-5067; 616 Overbrook Dr., Fort Walton Beach, FL 32547-3528; [jmochan@cox.net](mailto:jmochan@cox.net)

**Vice President:** Heidi Daniels (850)433- 1465; 221 Cevallos St. Pensacola, FL 32503; [hsdaniels@gmail.com](mailto:hsdaniels@gmail.com)

**Treasurer:** Jerry Gilbert (850) 862-4800; 700 Trowbridge Ave., Ft. Walton Beach, FL 32547

**Membership Officer:** Robert Ulrich (850) 939-6870; 7025 Pro Am Ct., Navarre, FL 32566 [bulrich@mchsi.com](mailto:bulrich@mchsi.com)

**Editor:** Bobbye Sikes Wicke (850) 862- 2874; P.O.Box 252, Mary Esther, FL 32569;

**Northwest Florida Mensa Home Page:** <http://www.nwflorida.us.mensa.org>

**Arbitrator/Mediator and Test Proctor:** Steve Brumm (850) 747-3233; Panama City, FLAD4WT@aol.com

**Gifted Child Coordinator:** Jonathan Miller (850) 939-9785; 8214 Riverside Landing Way, Navarre, FL 32566; jonathan.miller7@mchsi.com

**Panama City Coordinator:** George Chancellor (850) 874-0154; 7523 Coleridge Road, Panama City, FL 32404; georgec584@aol.com

**S.I.G.H.T Coordinator & Test Proctor:** Mabel Loesch (850) 433-2358; 2140 E. Scott St., Pensacola, FL 32503-4957; mloesch@bellsouth.net

**Test Proctor:** Joanne Horne (850) 315- 0255, 641 Merioneth Ct., Ft. Walton Beach, FL 32547; johorne@cox.net

**Webmaster:** Jill Russ (850) 678-9169, 12 Corbin Ct., Niceville, FL 32578; jillsruss@yahoo.com.

---

## Milestones

**Mensaversaries:** As of this month, the following Mensans have maintained continuous membership in American Mensa Ltd. for the years shown. These anniversaries may not accurately reflect the total number of years in Mensa if a break in membership for one or more years has occurred.

27 Joseph W. Weaver  
26 Robert G. Horne  
20 Thomas M. Stewart  
19 William W. Graham  
14 Eugene Hooprich  
14 Artice L. McGraw  
9 Theresa Culbertson  
8 Martha W. Porter  
6 W. Fred Bond  
6 Jerry J. Gilbert  
5 Dawn Cannon  
4 Ronald M. Hudspeth  
3 Nels Neumann  
2 Dan Finley  
1 James Hamilton  
1 Jason Hatcher  
1 Rhonda Wallis

## **HAPPY March BIRTHDAYS!**

1 John Lewis Mohre II  
6 Frank M. Butler Jr.  
12 Donald F. Kornegay  
18 Ronald Hosband  
18 Cameron Pouncey  
18 Fraser Sherman

18 David Woodward  
28 Betty Gershkoff

*If your birthday isn't listed, it's because it is not on the membership roster we get from the national office each month - and that's because you instructed National to withhold it. Please go to [us.mensa.org](http://us.mensa.org) and change your listing (or write to the address in your Mensa Bulletin, or call them). We promise not to tell anyone how old you are.*

---

## Answers to Seven Trivia Questions

1. India (from its British Empire roots). Most of the world 's automobiles (66%) are driven on the right side of the road, except for countries that were part of, or influenced by, the British Empire or Japan.
  2. China
  3. The Virgin Islands. Most of the western hemisphere drives on the right side of the road, except for British Empire-influenced Carribean Islands, Falkland Islands, Guyana and Suriname.
  4. The sequence was inspired by the Man Ray painting, Lips, which depicts a pair of lips in the sky. In the opening song of the movie, the red lips, set against a black background, belong to Patricia Quinn, who performed the role of Magenta. The song, Science Fiction/Double Feature, was sung by its writer, Richard O'Brien.
  5. Emmanuel Radnitzky
  6. [Please note: Admittedly this is something of a trick question pivoting on what one defines as 'buried'] Eugene Shoemaker, the American planetary scientist who co-discovered the Shoemaker-Levy 9 comet, died in a car accident in Alice Springs, Australia, on July 18, 1997. His ashes were carried to the Moon by the Lunar Prospector space probe which was launched in January 1998. After 18-months in lunar orbit, the probe with Shoemaker's ashes crashed into the Moon in June 1999. To date, he is the only person to have been buried on the moon.
  7. Songbird ; from Sky King, the American radio and television show of the 1940s and 1950s.
- 



Photo by Christine Pincince

## Précis

**Fraser Sherman**

*For a laugh: Two comic fantasies.*

DIRTY JOB by Christopher Moore has Charlie, an insecure antiquities dealer discover he's become one of the "death merchants" who collect the souls of the dead and transfer them to their new incarnations, despite such problems as sewer-dwelling soul-eaters, a Goth girl who wants his job and cops

who wonder why so many people seem to drop dead around Charlie. A bit heavy-handed in the psychology, but quite amusing.

**DARK LORD OF DERKHOLM** by Diana Wynne Jones shows the effect on a peaceful fantasy kingdom when a sorcerer from our world forces them to enact Lord of the Rings style wars for the amusement of geeks he takes through on tours (“See the epic battles! See the final defeat of the dark lord!”). The result is an amusing parody of some of genre conventions as the kingdom are forced to pose as evil sorcerers, fake monstrous armies and all the while try to find some way out of their situation.

---

## From Christine Pincince

Eleven people were hanging onto a rope under a helicopter, 10 men and one woman. The rope was not strong enough to carry them all, so they decided that one had to drop off, otherwise they all were going to fall.

They were not able to choose that person, but then the woman made a very touching speech. She said that she would voluntarily let go of the rope, because as a woman she was used to giving up everything for her husband and kids and for men in general without ever getting anything in return.

As soon as she finished her speech, all the men applauded.

---



*Photo by Bobby Wicke*

## Thanks to our 2007 Chocolate Orgy Contributors

Photo: our wonderful movers, shakers and chefs, Joanne Horne and Mary Ann Mochan

**Marya Bard** - Bourbon Balls

**Vera Cartwright** - Truffles (from Ohio!)

**Terri Culbertson** - Brownies

**Heidi Daniels** - Chocolate Nut Mix

**Joanne Horne** - Chocolate Praline Cake

**John Mochan** - Assorted Chocolate Cream Candy Sticks

**Mary Ann Mochan** - Buckeyes and Chocolate Covered Strawberries

**Sue Nichols** - Fudge and Chocolate Peppermint Cookie Sandwiches

**Cameron Pouncey** - Jumbo Chocolate Chip Cookies and Triple Chocolate Cookies

**James Russ** - Oreo Pudding Pie

**Jill Russ** - Seven Layer Chocolate Bars, Bueberry Crisp

**Fraser Sherman** - Chocolate Zucchini Bread

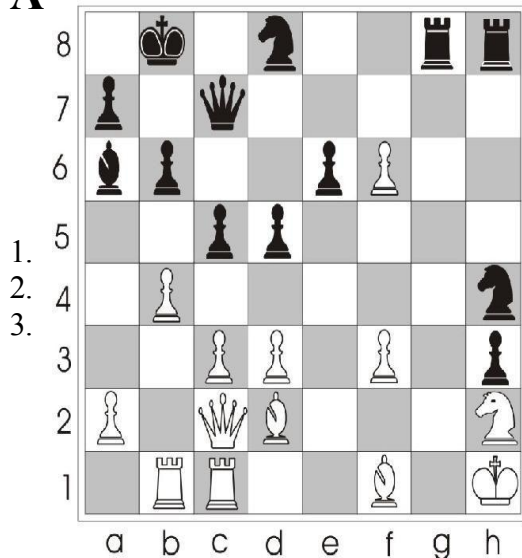
**Brenda Shutt** - Homemade Chocolate Vanilla Creams

**Lynda Ulrich** - Cookies and Cream Cake and Chocolate Fudge Cupcakes

*And the Czar of Cheesecake made a New York Cheesecake and a Chocolate Chip Cheesecake>*

---

**A** **MATE IN THREE - BLACK TO MOVE** **Chess Problem**



from Lars Runar

**February Solution:**

Rb7 Kb7

Bd5 Kb6

c5 Mate

*Reprinted by permission from Chess Training in 5333+1*

*Positions by Laszlo Polgar © 1994 Konemann Verlags gesellschaft*

**Editorial Policy**

**PensaMensa welcomes your articles and artwork!!** Submissions must show name, address, phone, and may be edited for clarity and space. Please enclose an SASE if you want your material returned. Deadline for submission is the 15th of each month.

PensaMensa is the official newsletter of Northwest Florida Mensa. Opinions expressed are those of the contributors and not necessarily those of any Mensa group or its officers. Mensa is a not-for-profit international society, whose sole requirement for membership is a score at or above the 98th percentile on any of a number of standard IQ tests. Please contact one of the Test Proctors (see Officers) for testing in Northwest Florida.