

# PensaMensa Newsletter

May 2007

- :: [Editor's Notes](#)
- :: [It's in the fine print . . .](#)
- :: ["M"embership News](#)
- :: [Seven Trivia Questions](#)
- :: [Cryptograms by Jill Russ](#)
- :: [The Tenth Story](#)
- :: [Cryptogram solutions](#)
- :: [Calendar](#)
- :: [A Chess Problem](#)
- :: [Top 10 Signs of Giftedness in Adulthood](#)
- :: [Officers of Northwest Florida Mensa](#)
- :: [Answers to Seven Trivia Questions](#)
- :: [Milestones](#)
- :: [Précis](#)
- :: [miscellaneous nonsense](#)
- :: [Editorial Policy](#)



## Just thinking . . .

Most of us have seen the TV coverage of the adorable polar bear cub playing affectionately with his keepers at the Berlin Zoo (yes, the same cub that some environmentalists said should be euthanized); and the ominous prophetic photos of a polar bear perched on an ice floe in a disappearing Arctic ice field. Most of

us had the knee-jerk reactions appropriate to our politics.

If we could step back from our politically-biased knee-jerk reactions for a moment (make a real effort, folks, it's just for a moment), what about the family pictured above? I am not sure what niche they fulfill in the grand scheme of things, and they are a dangerous nuisance when they hunt for sustenance in far north villages (did environmental warming drive them there, or do they like our cooking better than sushi?).

On the other hand, they are magnificent beasts, and perhaps the Berlin Zoo photos portend that they like us when they're not fixated on finding their next meal. They are a product of whichever Creation you believe in, as we are; they love and look after each other, just as we do . . .and their survival may be in our hands.

**Your moment's up: did you think about it?**

# Editor's Notes

I feel abandoned - no photos, no original articles from you this month; I'm backed into a corner and forced to create . . .something. Since it's hard to tell what you, the stockholders, like, (although you're quick to say what you *don't* like), how about a little help?

## What do you want in the newsletter?

\_\_\_ original articles about \_\_\_\_\_?  
\_\_\_ poems  
\_\_\_ pictures  
\_\_\_ puzzles, brainteasers  
\_\_\_ current events, politics, philosophy, or \_\_\_\_\_?  
(circle or cross out and/or add)

## What would you like to see in NWF Mensa programs? \_\_\_\_\_

\_\_\_\_\_

Are you willing to contribute to the \_\_\_ newsletter and/or \_\_\_ programs?

You can make a difference by completing this little quiz and emailing or mailing it to me or any officer of your choice (all listed on the opposite page). You don't have to sign your name. You can even phone us. What could be easier?

## News from all over

Seen on TV3 WEAR on the 10 p.m. news, April 4: **Mabel Loesch**. We knew she was a star.

Largest voting bloc in NWFM: four, **Tom and Jill Russ**, with the addition of their sons **James and Alexander**. With four votes, they could fill all the top offices next election. . .

---

## "M"embership News

### by Bob Ulrich

The total membership in Northwest Florida Mensa took a nice bump upward in March as the group added a net of 6 additional members for a new total of 209. This total is one less than last year at the same time and only down 6 from the all time high membership number of 215 achieved in February 2005.

This good news is tempered by the fact that we will lose membership in April as we do every year. Every year some members do not renew by the normal renewal date at the end of March. My local

membership roster from the national office shows that 37 members had not yet renewed. Historically some members renew a few days or weeks late and do not show up as April losses. But some folks don't re-up and our April loss since the year 2000 has varied between 17 and 33 members.

The gain of 6 members was caused by 8 additions and 2 subtractions. One of our losses came from the sad news of the passing on of **Russell Taptich** who lived in Pensacola. Russell was in his late 70s and had been a member for more than 25 years. Our condolences go out to his family and friends. The other membership decline was caused by the relocation of **Jason Hatcher** from Pensacola to New York City. His cost of living just went up. On to better news. This one relocation loss was offset by one relocation gain as **Tom Vail** moved from Saco, ME to Niceville, FL. Good luck in NYC to Jason and welcome to sunny Florida from colder Maine to Tom.

Of the other 7 additions 2 were from members reinstating their membership after absences of more than one year. So welcome back to **Myron Creel** in Panama City and to **Jack De La Piedra** in Pensacola.

That leaves 5 members who are brand new to Mensa. **Sally Garst** from Pensacola is new as are 2 sets of younger brothers. **Kyle Winston and Joseph Winston** from Shalimar are in the group, and **James Russ** and **Alexander Russ** join their parents Jill and Tom as members from Niceville. A hearty welcome to Mensa to the 5 of you and I hope you find your membership rewarding and fulfilling.

---

## Cryptograms

by **Jill Russ**

**Easy Level:**

LQRBVA KQOR QM EOQMD XVKOFSMX

VJ NVYF VLM HVAUKOWQXN SMB

XTOM OWXOMBQMD XTSX XVKOFSMHO

XV OZOFNVMO OKRO. ~BOOUSP HTVUFS

## Challenge Level:

The Challenge Level includes the "space" as part of the cryptogram. In other words, the letter R might actually be the space, and the space might actually be a letter. The end of each line of the cryptogram is the end of a word.

SVJWBHWYVBSXVAZY VDOTVNOTHSEPT

AZHVSXVSYBDOHPBHVBSXVWXR

SJKOTPV DOTV BROPXHTVHWVMRSXH

KOXPT.

~LYSXEVRRW JVUYOFDH

---

## The Tenth Story

### RVC Column for Region 10

Here is an interesting tidbit for you: As part of the MIL budget process, Stacey Kirsch did an analysis of all the national Mensas and their dues rates, converted to British pounds for comparison sake, as well as the testing costs. UK was at the top of the list for dues, charging 45 pounds. US is 9th on the list, charging the equivalent to 29.89 pounds. For testing costs, Canada was at the top of the list, charging the equivalent of 44.31 pounds. US is 7th, charging the equivalent of 17.24 pounds. I am probably as surprised as you are to see how many other national Mensas actually charge more than American Mensa does for both dues and testing, but 'tis true.

American Mensa is growing well! The membership numbers are up, retention is up, to the point that we almost hit the 55,000 mark in membership by the end of the fiscal year, which coincides with the end of the dues year, March 31.

There is another special promotion for testing going on in May. Please do spread the word to friends you think are qualified, as this would be a good time for them to save a bit of money. During the month of May, Home Tests will be sold for \$13 (as opposed to the usual \$18). Then returning the Home Test before June 30 earns a coupon worth \$5 off the Mensa Admission Test, valid until August 31.

Janice Johnson of Palm Beach Mensa is helping me organize a Leadership Development Workshop (LDW) for this coming fall, probably in November. Current plans are to hold it in the Orlando area, based on its central location in the state. Questionnaires were sent to officers and others around the state, inquiring about areas of interest and need, but that doesn't mean that those are the only members able to attend. If you have any interest in learning more about being an active Mensan, please do consider attending. More information will be forthcoming; for now, just keep it in mind.

Have you checked out [www.mensaforkids.org](http://www.mensaforkids.org) yet? Sponsored by the Foundation, this website is for young Mensans and other bright kids everywhere. There are games and activities, learning activities, and all sorts of child-oriented things. So check it out yourself, or let the bright kids in your world know about it! Spread the word!

**See you Memorial Day Weekend at ARRR-G (Tampa Bay's RG), 4th of July in Birmingham (the Annual Gathering), and Labor Day Weekend at Florange a Trois (Broward's RG).**

**Maggie Truelove, Regional Vice Chair, Region 10**  
3333 Honeysuckle Lane, Orlando, Florida 32812;  
407-855-9078; [truluvs@cfl.rr.com](mailto:truluvs@cfl.rr.com); [rvc10@cfl.rr.com](mailto:rvc10@cfl.rr.com); [rvc10@us.mensa.org](mailto:rvc10@us.mensa.org)

---

## Cryptogram solutions

### Easy Level:

Wisdom lies in being tolerant of your own complexity and then extending that tolerance to everyone else.

*~ Deepak Chopra*

### Challenge Level:

A doctor can bury his mistakes but an architect can only advise his clients to plant vines.

*~ Frank Lloyd Wright*

---

## Calendar

**Where no specific phone number is given, call 850-585-3194.>**

**Friday, May 4, 11 a.m. 1 p.m. First Friday in Pensacola, L-o-n-g Lunch at Scenic 90 Café, 701 Scenic Highway, Pensacola.** Drop in for a long visit if you can, a short one if you can't. As you enter the restaurant, go to your right and to the rear.

**Tuesday, May 8, 6 p.m. Supper Club in Pensacola, Hall's Seafood, 920 E Gregory St downtown Pensacola.** Call Dan Murray on his cell phone, 455-6339, after 7 p.m. or on weekends please.

**Saturday, May 12, 11:30 a.m. Second Saturday in Panama City. Lunch at Chef Imondi's**  
Downtown, 448 Harrison Avenue.

**Friday, May 18, 5 p.m. Happy Hour! at Buffalo Wild Wings** in Uptown Station, 99 Eglin Parkway, FWB. Hot wings, beer and music! Dave Howard is our coordinator - he and Tehane will be there at 5 p.m. Info: davehoward01@earthlink.net or 897-5702.

**Saturday, May 19, 2 p.m. ExComm and Open House** at the home of Heidi Daniels, 221 Cevallos St., Pensacola 32502. Bring a treat to share (or not) and your two cents worth (see Editor's Notes). Info: Heidi Daniels 850-433-1465.

**Friday, May 25, 11:30 a.m., Last Friday in Shalimar. Lunch at Shalimar Cheers Pub**, 1270 North Eglin Parkway: their # is 651-2740. It's at the back of a yellowish office building immediately north of the courthouse, turn at the red-and-yellow sign and go through the parking area all the way to the back and to the right.

**Saturday, May 26, Newsletter Assembly and games at the home of John and Mary Ann Mochan**, 616 Overbrook Dr., FWB. John will make brownies; bring your favorite goodies or beverage, fold, staple, mutilate and stamp, get your newsletter early and play games. Info: jmochan@cox.net or 585-3194.

**Tentative June events:** June 1, Lunch, Pensacola; June 9, Lunch, Panama City; June 12, Supper Club Pensacola; June 15, Happy Hour, TBA; June 16, ExComm, FWB; June 29, Lunch, Shalimar; June 30, Newsletter/Games Day, FWB.

### **SPECIAL INTEREST GROUPS**

**Photography SIG.** Dan Murray in Pensacola (455-6339) found out there was no camera club anywhere near him, so he started one.

**Pinochle SIG.** Contact Bob Mundorff in Navarre at (850) 939-5882 or pinochledd@aol.com .He will coordinate dates/times/schedules and is willing to host the games. For beginners too.

**Shooting SIG.** Contact Bob Mundorff in Navarre at pinochledd@aol.com or 939-5882 to go shooting during the week at the Escambia River Muzzleloader's range - modern small arms allowed.

### **Carolinah RG 007 - License to Thrill! Spartanburg, South Carolina - May 4-6, 2007**

An RG for your fun only, and hospitality from Carolinah with love! Join us in May at a spectacular new location in Spartanburg, SC, just up the road from Greenville.

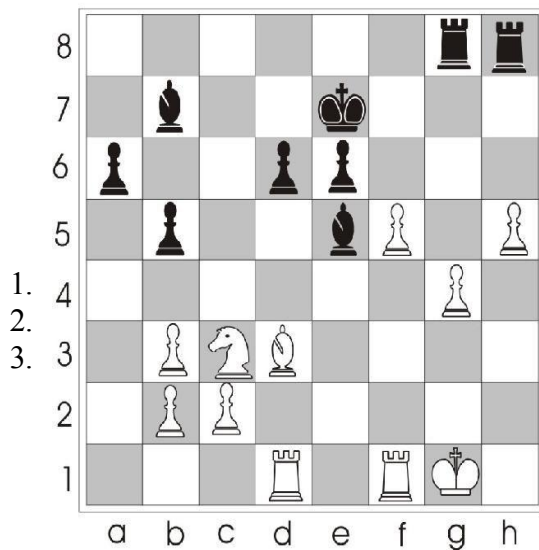
As always, we will have plenty of good food, friendly people and great programs! Dance another day at our Thunderball masked ball, with live music from the same great band we had last year. Bond with friends old and new. Fill your belly with good meals. Revel in our famous hospitality. Nobody does it better!

Registration: \$49 to Dec. 31; \$55 to Mar. 31; \$65 to Apr. 30; \$70 after May 1. Includes all programs, Saturday lunch and deluxe Sunday brunch in the Blue Ridge Café, plus all other meals in RG Hospitality.

Registrar: Mary Ann Cox, 509 Bethel Drive, Mauldin, SC 29662-1840; Phone: (864) 963-2335 email: maryacraig@juno.com

---

### MATE IN THREE - BLACK TO MOVE



## A Chess Problem

from Lars Runar

### April Solution:

Qf1

Rf1 Rf1

Kg2 Ne3 Mate

(Algebraic notation) Reprinted by permission from *Chess Training in 5333+1 Positions* by Laszlo Polgar © 1994 Konemann Verlags gesellschaft

## Top 10 Signs of Giftedness in Adulthood

The vast majority of adults who were labeled "gifted" in childhood are unaware that their advanced development would continue to have an impact throughout their lives. Contrary to popular belief, giftedness is not characterized by high intelligence alone. Rather, gifted individuals experience early and exceptional psychological, spiritual and intellectual development. As a result, gifted adults exhibit common personality traits and face similar challenges on the road to self-actualization. Gifted adults demonstrate:

- 1. Qualitative Differences in Information Processing.** Characterized by unique perception and awareness; a sense of humor and creativity outside the norm; questioning, searching for truth, intuitiveness; insightfulness; comfort with both divergent thinking (breaking things into components) and synergistic thinking (putting things together to form something new and different); relentless curiosity and heightened creative drive; being more process-oriented than product-oriented; holding divergent values compared to mainstream culture.
- 2. High Sensitivity.** Characterized by sensitivity to others often combined with a sense of personal alienation and loneliness; acute awareness of complexities and consequences; heightened responsiveness to expectations of others.
- 3. Intensity.** Characterized by high excitability; high energy level; emotional reactivity; high arousal of central nervous system (Kazimierz Dabrowski Theory of Positive Disintegration).
- 4. Multipotentiality.** Characterized by having capabilities in many areas and domains of talent; can move fluidly from one pursuit or interest to the next; the ability to juggle many things at once.
- 5. Idealism.** Characterized by striving for moral integrity; interest in social reform and service; extraordinarily high standards; low tolerance for mediocrity and frustration.
- 6. Perfectionism.** Characterized by self-criticism; labeling oneself as "scattered"; having a lowered sense of entitlement to make mistakes; identifying easily with failure; thinking they are more likely to blame than others; difficulty taking credit for achievement and abilities ("impostor" phenomenon).
- 7. Need for Autonomy.** Characterized by feelings of: being out of step and on a separate path; being "Other"; not fitting in; striving for inner authenticity; may experience deep conflicts between needs for self-actualization and maintaining traditional relationships.

**8. Strong Entelechy** (from Greek for \*having a goal\*). Characterized by the need for self-determination; for self-actualization; leadership qualities; achievement-orientation; interest in non-traditional careers and professions.

**9. Intense Moral Commitment.** Characterized by seeing injustice and doing something about it; willingness to stand up for one's beliefs; outrage at moral breaches that the rest of the world seems to take for granted.

**10. Global View.** Characterized by respect for all human beings; a greater capacity for empathy; concern for others - especially children; sensitivity and warmth.

Top 10 © Info about "If You're a Mensan": Paulette Wagner forwarded it for your enjoyment as "The Top 10 Signs of Giftedness in Adulthood." It was submitted by Elyse Killoran, Personal Coach and Life Strategist, who specializes in work with Gifted Women. Elyse can be reached at Elyse@WomensU.com, or visited on the web at [www.coachcentral.com/elysekilloran](http://www.coachcentral.com/elysekilloran) The original source is the work of Douglas Eby, Mary Rocamora, Kathleen Noble and studies conducted by Linda Kreger Silverman of the Institute for the Study of Advanced Development. ©1997, 98, 99, Coach U ([www.coachu.com/](http://www.coachu.com/)), all rights reserved. This content may be forwarded in full, with copyright, contact and creation information intact, without specific permission, when used only in a not-for-profit format.

---



## **It's in the fine print . . .**

**from Bob Horne**

Credit card companies do a great job at disclosing all of their terms and conditions . . . but do so in an exceptionally hard to read font and verbiage, designed to dissuade you from really reading the infamous "fine print". But failing to understand the terms can be costly.

Most people know that when your bill arrives, it needs to be paid on time or you'll be hit with a hefty late fee - but many don't know that paying late usually entitles the credit card company to raise your rate immediately and significantly. And worse yet - did you know that paying late on one of your credit cards also entitles all your other credit card companies to raise the rates you are paying them as well? You bet - it's called the "Universal Default Clause", and it basically means that if you are late on one credit card account, all other credit card companies that you have accounts with can increase the interest rate too, even if their accounts have been paid completely on time.

But the plot thickens further - this goes beyond late payments on credit cards alone.

If one of your credit card companies has the Universal Default Clause noted in their disclosure - and most of them do - this clause states that they have the right to penalize a consumer with an increased interest rate if a late payment is reported to ANY other creditor, including utilities, car loans, and home

loans. Better believe that credit card companies with this clause sit back and wait for the opportunity to increase the interest rate - and continually monitor their customer's credit reports, just waiting for the opportunity to do so. And just when you thought it couldn't get any worse . . .

. . . it's not just late payments that trigger the Universal Default Clause; interest rates can be increased if a consumer exceeds a credit limit, bounces a check, or applies for additional credit. All of these signs may be read by the credit card company that a consumer is "high risk". The penalty? You guessed it - a higher interest rate.

Further, if an offer seems too good to be true, it probably is. This popular phrase rings true for many consumers that sign up for zero percent interest offers. Although these offers sound great and every consumer goes in with the best intentions of paying the balance in full before the zero percent interest term expires, the vast majority of people do not pay off the bill before the offer ends. And what consumers do not realize is if the account is not paid in full, the creditor does not start charging interest from the date the deal expires, the creditor goes back to the day the purchase was made and charges interest on the balance for the entire period.

Or - back to the Universal Default Clause, if you are late on another credit card payment during the introductory time period with the zero percent rate offer - the card issuer of that sweet deal could prematurely break it off and force a steamed up interest rate, retroactively charged back to the original date of purchase. That smoldering rate could mean paying double or even triple for the purchased merchandise.

Try your best to only charge what you can afford to pay off in full, on a monthly basis. Beyond being just good advice, here's another little known credit card fact that could cost you.

If you charge and then pay the account in full, there is no interest due. But if you charge and choose to only pay half of the bill when it arrives, guess what - you get charged interest not just on the remaining balance, but for the entire charged balance, regardless of your paying half the bill in full. If the bill is not paid in full the following month, this game continues until the account is paid in full.

So although the fine print can be a real snoozer to read, taking the time to become familiar with credit card terms and conditions can save you some serious dollars. Review your current credit card terms and conditions and take the time to find a credit card company that truly matches your spending habits and needs. You will save yourself a few sleepless nights - and more importantly, save yourself a lot of money too!

*This timely article was published by Countrywide Home Loans.*

---

## Seven Trivia Questions

**Dr. Dan Finley, Brain Bowl Coach & Health Sciences Professor, Gulf Coast Community College, Panama City.**

Dr. Dan invites you to submit a guest trivia question to [dfinley@gulfcoast.edu](mailto:dfinley@gulfcoast.edu) for possible inclusion in future columns.

1. What is "Gitche Gumee" in Longfellow's Song of Hiawatha?

2. Who sang the 1966 hit song Tiny Bubbles?
  3. What entertainer's birth name was Dino Crocetti?
  4. What is the meaning of the German word weltenschmerz?
  5. What is Pomac?
  6. Who was President of the United States for just one day, March 4, 1849?
  7. Name the five states that were independent nations before joining the United States?
- 

## Officers of Northwest Florida Mensa

**President:** John Mochan (850) 585- 3194; 585-5067; 616 Overbrook Dr., Fort Walton Beach, FL 32547-3528; jmochan@cox.net

**Vice President:** Heidi Daniels (850)433- 1465; 221 Cevallos St. Pensacola, FL 32503; hsdaniels@gmail.com

**Treasurer:** Jerry Gilbert (850) 862-4800; 700 Trowbridge Ave., Ft. Walton Beach, FL 32547

**Membership Officer:** Robert Ulrich (850) 939-6870; 7025 Pro Am Ct., Navarre, FL 32566  
bulrich@mchsi.com

**Editor:** Bobbye Sikes Wicke (850) 862- 2874; P.O.Box 252, Mary Esther, FL 32569;

**Northwest Florida Mensa Home Page:** <http://www.nwflorida.us.mensa.org>

**Arbitrator/Mediator and Test Proctor:** Steve Brumm (850) 747-3233; Panama City, FLAD4WT@aol.com

**Gifted Child Coordinator:** Jonathan Miller (850) 939-9785; 8214 Riverside Landing Way, Navarre, FL 32566; jonathan.miller7@mchsi.com

**Panama City Coordinator:** George Chancellor (850) 874-0154; 7523 Coleridge Road, Panama City, FL 32404; georgec584@aol.com

**S.I.G.H.T Coordinator & Test Proctor:** Mabel Loesch (850) 433-2358; 2140 E. Scott St., Pensacola, FL 32503-4957; mloesch@bellsouth.net

**Test Proctor:** Joanne Horne (850) 315- 0255, 641 Merioneth Ct., Ft. Walton Beach, FL 32547; johorne@cox.net

**Webmaster:** Jill Russ (850) 678-9169, 12 Corbin Ct., Niceville, FL 32578; jillsruss@yahoo.com.

---

## Answers to Seven Trivia Questions

1. Lake Superior. Gitche Gumee is really Gichigami, or the Ojibwe Native American word for "big water" and refers to Lake Superior.

2. Don Ho, birth name is Don Ho Tai Loy (1930- present), a Hawaiian entertainer who made the song famous at Duke's in Honolulu.

3. Dean Martin who was born in Steubenville, Ohio in 1917.

4. *Weltschmerz* is German for "world-pain" and means sentimental pessimism expressing the sorrow, disillusionment, and discontent one feels and accepts as a part of existence. This attitude is especially prevalent in existential writers.

5. Pommac is a Swedish carbonated soft drink made of fruits and berries and matured in oak barrels for three-months. The name comes from pomme, the French word for apple, and "ac" as it is matured in oak barrels like cognac. It has been made in Stockholm, Sweden by the Fructus Fabriker company since 1919. The drink was made for the upper classes as an alcohol free substitute for wine. Dr. Pepper distributed a formulation of it in the US as a diet drink from 1963 to 1969 in six-and-a-half-ounce and ten-ounce bottles. When sales remained stagnant after six years, and its sweetener, sodium cyclamate, was banned, Dr. Pepper discontinued the product.

6. David Rice Atchison. President James Polk was scheduled to step down from office at noon on Sunday, March 4, 1849. President-elect Zachary Taylor was a religious man and refused to be sworn in on a Sunday. Taylor insisted on waited until the following day, March 5, 1849. This created the problem of who would serve as the President during this twenty-four- hour period? Normally, the Vice-President George M. Dallas would fill the position, but his term expired along with Polk's. Under the law, the Presidency then fell to the President Pro Tem of the Senate, David Rice Atchison. As a result, Atchison legally became the President for one-day, even though he was never elected to this office or sworn in. Luckily, no major executive decisions had to be made.

7. California, Hawaii, the Florida Parishes of Louisiana, Texas and Vermont.

---

## Milestones

**Mensaversaries:** As of this month, the following Mensans have maintained continuous membership in American Mensa Ltd. for the years shown. These anniversaries may not accurately reflect the total number of years in Mensa if a break in membership for one or more years has occurred.

25 R.A. Isaacs  
24 James Lynn Smith  
13 Harvey Richard Hall  
11 John Mochan  
9 Ross Goldberg  
6 Patricia Levesque  
4 Jennifer Clark  
3 RYANNE MOORE  
2 Ed Wicke  
1 Lydia Del Rosario  
1 Shawn Horn

### **HAPPY MAY BIRTHDAYS!**

1 Joseph Hobart  
3 Richard Henson  
5 Harvey Richard Hall  
10 Kermit Hemmert  
15 Richard A. Clinchy III

15 Arthur Krzeminski  
17 Robert C. Henderson  
19 W. Fred Bond  
28 Daniel Stevens Murray  
29 Tami L. Volk  
30 Michele Buzek

*If your birthday isn't listed, it's because it is not on the membership roster we get from the national office each month - and that's because you instructed National to withhold it. Please go to [us.mensa.org](http://us.mensa.org) and change your listing (or write to the address in your Mensa Bulletin, or call them). We promise not to tell anyone how old you are.*



## Précis

### Fraser Sherman

*James Bond, the myth-*  
**LICENCE TO THRILL: A Cultural History of the James Bond Films** by James Chapman is a look at how the Bond franchise gained immortality through a mix of glamorous fantasy ("He's the flip side of sixties social realism-a man who's successfully escaped being

trapped in a crappy apartment with a bad marriage."), sex and violence, the darker edge Bond sometimes shows (Chapman argues Bond falls between the morally ambiguous heroes of John LeCarre and the boyish adventures of Bulldog Drummond) and a cheerful denial of Britain's geopolitical reality (in *TOMORROW NEVER DIES*, for instance, Britain is assumed to be able to engage in a naval war with China). Part of what impressed me is that much of Chapman's analysis holds up for the films released since he wrote it, such as his point that the key character after Bond is no longer the villain but the female lead ("Starting with *THE SPY WHO LOVED ME*, the villains tend to be colorless but the women, even if portrayed as sex objects, are much more interesting characters."). Worth a look.

*And the man-***THE FILMS OF SEAN CONNERY** by Lee Pfeiffer and Philip Lisa chronicles Connery's rise from thug parts in British crime dramas to his role in *DR. NO* and the astonishing variety of films he's played in since (though like a lot of "Films of" books, this is already out of date, missing *LEAGUE OF EXTRAORDINARY GENTLEMEN*). Good reading for any Connery fans, though a bit too reverential-the flops are either explained as Crappy Films But He Was Brilliant! or Really Good Films That The Public Overlooked.

---

# Miscellaneous nonsense

## *Congress investigating the Justice Department*

Never give yourself a haircut after three margaritas.

Be really nice to your family and friends because you never know when you are going to need them to empty your bed pan and hold your hand.

### **Decline in Morals**

Two ministers were discussing the decline in morals in the modern world. "I didn't sleep with my wife before we were married," said one clergyman self-righteously. "Did you?" "I don't know," said the other. "What was her maiden name?"



# Editorial Policy

**PensaMensa welcomes your articles and artwork!!** Submissions must show name, address, phone, and may be edited for clarity and space. Please enclose an SASE if you want your material returned. Deadline for submission is the 15th of each month.

PensaMensa is the official newsletter of Northwest Florida Mensa. Opinions expressed are those of the contributors and not necessarily those of any Mensa group or its officers. Mensa is a not-for-profit international society, whose sole requirement for membership is a score at or above the 98th percentile on any of a number of standard IQ tests. Please contact one of the Test Proctors (see Officers) for testing in Northwest Florida.