

# PensaMensa Newsletter

November 2006

- :: [President's Page](#)
- :: [Veritable Vino and Victuals](#)
- :: ["M"embership News](#)
- :: [Seven Trivia Questions](#)
- :: [ExComm Minutes](#)
- :: [The Tenth Story](#)
- :: [Yard Sale, Treasurer's Report](#)
- :: [Calendar](#)
- :: [A Cultural News Update](#)
- :: [ValenTime!](#)
- :: [Wanted: PR Coordinator](#)
- :: [Officers of Northwest Florida Mensa](#)
- :: [A Better Life Plan](#)
- :: [Milestones](#)
- :: [Answers to Seven Trivia Questions](#)
- :: [Précis](#)
- :: [A Chess Problem](#)
- :: [Editorial Policy](#)



***Paella Party: Alda Stevens, hostess Bell White, Anna Keener, and host Bill White ready to serve a feast.***

We're delighted to welcome our new webmaster, Jill Russ. Jill teaches third grade at Plew Elementary in Niceville, and her students already have their own website.

Next month we will publish a membership list, sorted by zip code and then

alphabetically. We won't publish phone numbers or e-mail addresses, but if you can't find a member's number in the phone book, call or e-mail John Mochan or Bob Ulrich or me to get it. Information that you have instructed National not to share with other members will be kept confidential. Many Mensa groups publish membership lists annually, and we believe this is a good way for our widespread and diverse group to connect with members in their area (see Maggie Truelove's thoughtful comments).

Those amendments to the Florida Constitution are either already covered by statutes or will open loopholes you won't like and can't later fix easily. Just say no: remember the pregnant pig constitutional amendment and the high speed train nobody wanted and we couldn't afford?

If you are getting both the electronic and the print version of *PensaMensa*, and you're willing to give up the print version and save us a buck, please let me know at .

## President's Page

by John Mochan

The recently elected officers have settled into their new duties for the next two years. We welcome all your suggestions to make our group the best it can be. The membership list in the December newsletter can help you get acquainted with other members that you didn't know lived so close to you. It might even inspire you to host a new monthly event in your area. Please contact us with your ideas. Don't forget to come to the Garage Sale at Bobbye's on November 11 in Fort Walton Beach. The best bargains will sell early! See you at the next event.

---

## "M"embership News

by Bob Ulrich

Northwest Florida Mensa is moving in the positive direction again on the membership front. Like it was in August, we had more Mensa Members move out of our area than move in. But in September we had a difference of only 1 and we offset this with 4 members rejoining the organization. Thus we had a net gain of 3 bringing our roster total to 195. This is equal to what we had at the end of September 2004 and 5 more than we had at then we had at that time last year.

September saw 4 local M's move away from this area. The move outs were as follows: **Sherri Edwards** from Destin, FL to Adel, GA; **Brandon Forrest** from Pensacola, FL to New Orleans, LA; **Michael Holland** also from Pensacola, FL to New Orleans, LA; and **John Saltzman** who moved from an Air/Army Post Office in Florida address to an Air/Army Post Office in Europe address. Best Wishes to all these folks in their new locales.

As mentioned above we had 1 fewer relocates in than out so that means 3 Mensans moved here. They are: **Jason Hatcher** ( our second local group member named Jason Hatcher) who came from Boston, MA to Pensacola, FL; **Ronald Hosband** who relocated from Honolulu, HI to Pensacola, FL; and **Joseph Motherway** who relocated from Pacific Grove, CA to Gulf Breeze, FL. We are happy you chose to live here and wish you well.

Of the 4 members who rejoined, 2 were out for less than a year and 2 were gone for longer than that. The 2 reinstatements after a short absence are **Robert Clark** in Gulf Breeze and **Kennard Porter** in Pensacola. The 2 coming back after a longer absence are **Betty Gershkoff** in Defuniak Springs and **Ed Middleswart** in Pensacola. Welcome back to Mensa to the 4 of you.

As you will read elsewhere in this newsletter we had a number of people test locally for Mensa membership during October as part of our National Testing Day program. Hopefully this will lead to more new members down the road.

---

## ExComm Minutes

The Executive Committee Meeting was held during the annual Paella Party at the White's in Fort Walton Beach on October 21, 2006. The meeting was called to order at 2:31 PM. Attending were: John Mochan, Bob Ulrich, Jerry Gilbert, Bobbye Wicke, Bob Horne, Mabel Loesch, Fraser Sherman, and Mary Ann Mochan. John Mochan moved and Bob Ulrich seconded that the minutes of the previous meeting be approved as published in the newsletter.

**President:** Verified that all new officers have access to the handbook describing the duties of their office.

**Vice President:** No report.

**Membership:** We presently have 195 members. See details in Membership Officer's Report.

**Treasurer:** See Treasurer's Report in the newsletter.

**Publications Officer:** Marianne McDonald of Pensacola has given us several examples of her art for use on our newsletter cover. Motion was passed to authorize a color cover for the December newsletter. Another motion passed with one vote against to publish a membership list sorted by zip code in the December newsletter and yearly afterwards.

### NEW BUSINESS

The Autumn Garage Sale will be November 11 at the home of Bobbye Wicke in Fort Walton Beach. Please contact any officer to donate items for sale.

Bobbye Wicke was appointed as our new interim Publicity Officer.

Joanne Horne tested 5 people in Crestview and Mabel Loesch tested one person in Pensacola for Mensa Testing Day.

Jill Russ was appointed as our new Webmaster. She has updated our website with a new look and will be adding new features to it in the near future. Check it out at [www.nwflorida.us.mensa.org](http://www.nwflorida.us.mensa.org).

Mabel will obtain the information for next year's MERF Scholarships and distribute it to local schools. The Regional Gathering Program Committee already has seven potential speakers lined up and is well on their way to making our FIFTH Annual ValenTime RG the best ever. Registration forms are online and were published in last month's newsletter. Sign up early! Next month's meeting will be Saturday, November 18 in Pensacola at Heidi Daniel's.

Adjourned at 3:05PM.

---

## The Tenth Story

### RVC Column for Region 10

**New members.** They are very important to every local group. They ensure continued growth of our local groups. They replace members who have moved away or left local groups. They can be the source of new ideas and new energy to the local groups. But many of them join, stay only briefly, and then are gone. Ever wonder why?

I have been hearing comments (not necessarily from Region 10) being expressed by new members about why they don't ever attend anything or about why they may not renew. The answers are surprising and sad. Some have said that they never got brave enough to attend anything since they

didn't know anybody there. Some who did attend an event or two said they weren't made to feel welcome, even felt kind of invisible.

So here are a few thoughts on ways to make new members feel more welcome. Some groups have a membership officer. In some groups, that officer sends a welcome letter to new members. That's a good thing. But perhaps following up with a phone call would be even better? In most groups, that would mean making a few phone calls per month, but it might pay off in big benefits by gaining new loyal members who attend things! Some groups have a designated welcomer at parties. This person keeps an eye out for unfamiliar faces, makes a point of introducing him/herself and others to the person, and making them feel welcome. Other groups actually have a "new member welcome" get together every few months, inviting the new members specifically to come and meet some "old" members, possibly the officers. Other groups have a brief "new member handbook" to send to new members. One handbook I heard about included a glossary of commonly used Mensa abbreviations and acronyms. How many of us knew what LocSec, RVC, or SIG was when we first joined?

If any of this gives you ideas of how to step things up a bit in how your local group welcomes new members, I am delighted! And if there is anything I as RVC can do to help you accomplish this, please don't hesitate to ask. For instance, if your local group decides to produce a new member handbook, but the budget doesn't have room for the full printing cost, perhaps I can help. Or if you need to find out how to make something work, if I don't have the answer, perhaps I can help you find the information you need. Just ask. And if you are a new member with a good idea of how the local group could have made you feel more welcome, please let either me or your local group officers know.

Happy Thanksgiving!

**Maggie Truelove, Regional Vice Chair, Region 10;** 3333 Honeysuckle Lane, Orlando, Florida 32812; 407- 855-9078; truluvs@cfl.rr.com; rvc10@cfl.rr.com; rvc10@us.mensa.org

---

## **Yard Sale, Treasurer's Report**

### **and other exciting nuggets**

**Our Autumn Garage sale is Saturday, November 11, 7 a.m. - 12 noon** at the home of Bobbye Wicke, 108 Benarr Ave. NW, Ft. Walton Beach (SW corner of Benarr and Sullivan, only 2 blocks from Home Depot in FWB).

Donate your white elephants! Call any NWF Mensa officer for pick-ups or drop-offs (see website and newsletter) or bring your stuff to Bobbye's house (please call first - 862-2874).

Bring your checkbook or cash and buy better white elephants!

Do some one-of-a-kind collectibles Christmas shopping! You won't believe how cheap this neat stuff is.

***All the filthy lucre we make from the garage sales is spent on YOU. And you even get to tell us how to spend it. . . if you just show up, e-mail, or write to us.***

### **Statement of Accounts: 1 April 2006 to 30 September 2006**

In May, 2006, we started switching our bank account from Warrington Bank which was located only in Pensacola to Compass Bank, which is located both in Pensacola and Fort Walton Beach. The starting balance in the Warrington Bank was \$3,681.72 on 1 April and \$3,011.49 on 30 September. The Compass Bank balance was \$0 on 1 April and \$1,010.22 on 30 September. Our major income during this period was \$1,186.52 from American Mensa Group Funding. Our major expense was \$1,044.64 for production and mailing of our newsletter. Small miscellaneous expenses were \$1.00 to close the Warrington account and \$37.47 for new checks on the Compass account and postage. Miscellaneous profits of \$392.75 were realized from our yard sale. In October we will complete the switchover to

Compass Bank and greatly simplify the next statement.

The current balance after paying for the November newsletter is \$4,078.62.

*Jerry Gilbert, Treasurer*

The annual audit of Northwest Florida Mensa was accomplished at the end of September 2006 by John Mochan and Bob Ulrich. No discrepancies were found. *Report by John Mochan.*

---

## Calendar

**Where no specific phone number is given, call 850-585-3194.**

**Friday, Nov. 3, 6, 11 a.m.- 1 p.m. First Friday in Pensacola, L-o-n-g Lunch at Scenic 90 Café**, 701 Scenic Highway, Pensacola. Drop in for a long visit if you can, a short one if you can't. As you enter the restaurant, go to your right and to the rear.

**Saturday, Nov. 11, 11:30 a.m. Second Saturday in Panama City.** Lunch at Chef Imondi's Downtown, 448 Harrison Avenue, Panama City.

**Saturday, Nov. 11, 7 a.m.-noon. Autumn Garage Sale** at the home of Bobbye Wicke, 108 Benarr Ave. NW, Ft. Walton Beach (SW corner of Benarr and Sullivan, only two blocks from Home Depot). Info/directions: John Mochan 585-3194, [jmochan@cox.net](mailto:jmochan@cox.net); Bobbye Wicke 862-2874, . Call any officer in your area for help with pickup and delivery.

**Tuesday, Nov. 14, 6 p.m. New! Supper Club in Pensacola -Hall's Seafood** (920 E Gregory St downtown Pensacola) Call Dan Murray on his cell phone, 455-6339, after 7 p.m. or on weekends please.

**Friday, Nov. 17, 5 p.m. - Happy Hour! Pranzo at 1225 Santa Rosa Boulevard**, over the Brooks Bridge on Santa Rosa Island. To get there from the west, one must turn RIGHT at the light at the East end of the bridge, not left, as left turns are prohibited. Then, make the first right, and then follow around and under the east end of the bridge, and finally left on Santa Rosa Blvd to Pranzo in the left. It's Italian, of course, and behind the Convention Center. For the more knowledgeable, it's near Sammy's Gentlemen's Club and across from the new Pandora's. Dave Howard is our coordinator - he and Tehane will be there at 5 p.m. Call or e-mail [davehoward01@earthlink.net](mailto:davehoward01@earthlink.net) or 897-5702.

**Saturday, Nov. 18, 2 p.m. ExComm Meeting in Pensacola** – 221 Cevallos St. Contact Heidi Daniels, [hsdaniels@gmail.com](mailto:hsdaniels@gmail.com).

**Saturday, Nov. 18, 6:30 p.m., GenXers Wine Tasting in Pensacola** – With Dana Schack and Andy at their home in Navarre, 2016 Frontera St. Contact Heidi Daniels, [hsdaniels@gmail.com](mailto:hsdaniels@gmail.com) or 433- 1465.

Friday, Nov. 24, 11:30 a.m., Last Friday in Shalimar. Lunch at Shalimar Cheers Pub, 1270 North Eglin Parkway: their # is 651-2740. It's at the back of a yellowish office building immediately north of the courthouse, turn at the red-and-yellow sign and go through the parking area all the way to the back and to the right.

**Saturday, Dec. 2, 2:00 p.m. Newsletter Assembly and Games** - at the home of John and Mary Ann Mochan, 616 Overbrook Drive. FWB. Bring a snack or beverage, enjoy John's brownies, fold, staple, mutilate and stamp and get your newsletter early. jmochan@cox.net or 850-585-3194.

**Tentative December Events:**

Dec. 1, Lunch, Pensacola; Dec. 2, GenX Jewelry Making, Pensacola; Dec. 9, Lunch, Panama City; Dec. 12, Supper Club, Pensacola; Dec. 15, Happy Hour, Fort Walton Beach; Dec. 16, ExComm, Fort Walton Beach; Dec. 29, Lunch, Shalimar; Dec. 30, Newsletter/Games Day, FWB

**SPECIAL INTEREST GROUPS**

**Crestview Lunch Group.** Call Lovic Thomas at 682-4133 to arrange a get-together.

**Photography SIG.** Dan Murray in Pensacola (455-6339) found out there was no camera club anywhere near him, so he started one.

**Pinochle SIG.** Contact Bob Mundorff in Navarre at 850) 939-5882 or pinochledd@aol.com .He will coordinate dates/times/schedules and is willing to host the games. For beginners too.

**Shooting SIG.** Contact Bob Mundorff in Navarre at pinochledd@aol.com or 939-5882 to go shooting during the week at the Escambia River Muzzleloader's range - modern small arms allowed.

---

## A Cultural News Update

I was recently told by one of our bachelors (whom I will generously call "middle-aged") about a local radio program promoting Sinfonia, the local symphony orchestra. He said that one of their early events to raise benefactors for funding was named "Beethoven and Botox." and he felt that this was obviously aimed at the area "dowager" crowd. In keeping with today's political correctness criteria, the only fair thing to do would be to have other concerts for ageing men and women.

Our bachelor suggested that considerable funding could be generated by a series of concerts designed for both sexes. The proposed titles for this series could be "Violins (or Vivaldi) and Viagra," or "Cellos and Ciallis." Of course, for legal purposes, all male persons attending would have to certify that they were advised that if the event lasted four hours or more, they would have to go to the emergency room before proceeding home.

Thought for the day: There is more money being spent on breast implants and Viagra today than on Alzheimer's research. This means that by 2040, there should be a large elderly population with perky boobs and huge erections and absolutely no recollection of what to do with them.

---

## ValenTime!

**Mark your calendars now**

**February 9-11, 2007 (3 p.m. Friday thru noon Sunday) at the Holiday Inn, 1020 Hwy 98 East, Destin, FL.**

*A great program is shaping up* - pack your most outrageous t-shirt for the Wit T-shirt Contest, your pirate costume, and your GPS - or just come on down and we'll outfit you!

All your favorite events are scheduled along with some new treats, and the best RG cuisine anywhere.

And you can take our smiling dolphins home with you on our 5th Anniversary t-shirt! Details next

month on pre-ordering to be sure your size is available and waiting for you.

Registration is \$40 per person if paid by Feb 1, \$45 per person at the door, or \$20 per person for Friday night, \$35 for Saturday, and \$10 for Sunday. Please make checks payable to Northwest Florida Mensa.

Name(s) \_\_\_\_\_

Address \_\_\_\_\_

Phone \_\_\_\_\_

Email: \_\_\_\_\_

Please mail this form to: Registrar — ValenTime

616 Overbrook Drive, Fort Walton Beach, FL 32547- 3528

Contact: John Mochan - (850)-585-3194, [jmochan@cox.net](mailto:jmochan@cox.net)

Room rates APPROXIMATELY \$75—\$108 depending on Gulf View. Double occupancy. Add \$10 per extra person. Call the hotel at (877)-837-6181 or (850)- 837-6181 and tell them you are with the Mensa group.

*Visit us at: [nwflorida.us.mensa.org](http://nwflorida.us.mensa.org)*

---

## **Veritable Vino and Victuals**

**by Heidi Daniels**

The veritable part is where you come in! Transport a bottle of your favorite wine to the wine tasting at Dana and Andy's house November 18th at 6:30 PM (2016 Frontera St., Navarre). If you are sans favorite wine here are a few tips to help you pick one out. Remember, asking the wine personnel is only admitting weakness. Stay strong! You should browse the aisles until you see a cool label such as a part turkey part scorpion type animal or smoking gecko about to parachute from a plane. The more odd the better. Trust me it will show your eclectic side. If no labels jump out at you then you must debate the age old question: "Is it still wine if it comes in a box?" Well that is my wine selection technique anyway. You can thank me later. Feel free to bring along wine friendly victuals (or vittles) I mean we are in the south! Oh yes, and rumor has it that Andy brought back German wine from his travels.

### **Jewelry Making at Moondance**

Unleash your creative side or if you don't keep it on a leash then just arrive at Moondance on December 2nd at 10:00 AM. We will be taught the art of making earrings, bracelets, necklaces, and who knows what else by the artisans on staff. Moondance has over a million types of beads ranging in color and style from simple to funky including crystals and semi precious stones. This is a family friendly event so bring the kids. Moondance is located at 1100 West Garden St., downtown Pensacola.

Heidi Daniels - GenX Coordinator,

[hsdaniels@gmail.com](mailto:hsdaniels@gmail.com)

*The GenX group is comprised of all Mensans born between 1961 and 1981 whose sole purpose is to provide an opportunity to cavort with like-aged Mensans. No ID needed, so, if you aren't GenX but any event interests you, please join us!*

---

## Seven Trivia Questions

**Dr. Dan Finley, Brain Bowl Coach & Health Sciences Professor, Gulf Coast Community College, Panama City.**

Dr. Dan invites you to submit a guest trivia question to [dfinley@gulfcoast.edu](mailto:dfinley@gulfcoast.edu) for possible inclusion in future columns.

Dr. Dan Finley, Brain Bowl Coach & Health Sciences Professor, Gulf Coast Community College, Panama City. Dr. Dan invites you to submit a guest trivia question to [dfinley@gulfcoast.edu](mailto:dfinley@gulfcoast.edu) for possible inclusion in future columns.

1. What poet wrote, "Good fences make good neighbors"?
2. What star is closest to the Earth?
3. What frame story describes the 1348 bubonic plague in Italy?
4. Who was the German physicist who was the first scientist to detect and produce x-rays?
5. What is the world's most eastern Arab nation and the only nation in the world whose name begins with the letter "O"?
6. Name any one of the four states that designates themselves as a "commonwealth."
7. In biology, for what do the letters ADP stand?

---

## Wanted: PR Coordinator



Photo by Bill White

**Photo: Your ExComm at work? Clockwise, Bobbye Wicke, Mabel Loesch, Lynda Ulrich, Bob Horne, Jerry Gilbert, Bob Ulrich and John Mochan. You would look good here!**

**Official job description:** The Public Relations Coordinator brings the Local Group's message, activities and results to the attention of the media, in order to gain new members. An imaginative PR officer will develop publicity in newspapers, magazines, television, radio, cable

and in-house public relations endeavors. Advertisements in media, on posters and through local speakers' bureaus can be used to spread the message.

**More specifically,** Jo Horne says: Locally, the PR Coordinator works with the guidance of the Publications Officer. The PR coordinator would send general interest activity information to the local papers – i.e., “*Mensa in Panama City is lunching at 11:30 on xx/xx/2006 at Chez \_\_\_\_\_*.  
*Directions/Information: contact \_\_\_\_\_*”

Each year we have Scholarship winners – a photo and caption announcing the Mensa scholarship winners would be a welcome sight in local papers. – And why not announce the scholarship availability – with a “see your high school/college financial aid officer – or visit [mensa.us.org](http://mensa.us.org).”

Not the least of a PR Coordinator's duties should be to ensure that the once a year National Testing day gets all possible, free, advertising.

With email and maybe a FAX machine, PR Coordinator duties are doable – and could be fun. Enlist the

help of others for photos, print ideas and coordination.

**Editor's note:** Actually, *it is fun*, and all the information the PR Coordinator needs to deliver press releases to the right place at the right time is in your newsletter. If needed, a crash course in doing press releases is available, and I have an extra fax machine. Contact me or John or Jo anytime ASAP.

---

## Officers of Northwest Florida Mensa

**President:** John Mochan (850) 585- 3194; 585-5067; 616 Overbrook Dr., Fort Walton Beach, FL 32547-3528; jmochan@cox.net

**Vice President:** Heidi Daniels (850)433- 1465; 221 Cevallos St. Pensacola, FL 32503; hsdaniels@gmail.com

**Treasurer:** Jerry Gilbert (850) 862-4800; 700 Trowbridge Ave., Ft. Walton Beach, FL 32547

**Membership Officer:** Robert Ulrich (850) 939-6870; 7025 Pro Am Ct., Navarre, FL 32566  
bulrich@mchsi.com

**Editor:** Bobbye Sikes Wicke (850) 862- 2874; P.O.Box 252, Mary Esther, FL 32569;

**Northwest Florida Mensa Home Page:** <http://www.nwflorida.us.mensa.org>

**Arbitrator/Mediator and Test Proctor:** Steve Brumm (850) 747-3233; Panama City, FLAD4WT@aol.com

**Gifted Child Coordinator:** Jonathan Miller (850) 939-9785; 8214 Riverside Landing Way, Navarre, FL 32566; jonathan.miller7@mchsi.com

**Panama City Coordinator:** George Chancellor (850) 874-0154; 7523 Coleridge Road, Panama City, FL 32404; georgec584@aol.com

**S.I.G.H.T Coordinator & Test Proctor:** Mabel Loesch (850) 433-2358; 2140 E. Scott St., Pensacola, FL 32503-4957; mloesch@bellsouth.net

**Test Proctor:** Joanne Horne (850) 315- 0255, 641 Merioneth Ct., Ft. Walton Beach, FL 32547; johorne@cox.net

**Webmaster:** Jill Russ (850) 678-9169, 12 Corbin Ct., Niceville, FL 32578; jillsruss@yahoo.com.

---

## A Better Life Plan

I think the life cycle is all backwards:

- You should start out dead and get it out of the way.
- Then, you wake up in an old age home feeling better every day.
- You get kicked out for being too healthy; go collect your pension, then when you start work, you get a gold watch on your first day.
- You work 40 years until you're young enough to enjoy your retirement.
- You drink alcohol, you party, you're generally promiscuous and you get ready for High School.
- You go to primary school, you become a kid, you play, you have no responsibilities, you become a baby, and then...
- You spend your last 9 months floating peacefully in luxury, in spa-like conditions; central heating, room service on tap, larger quarters every day, and then, you finish off as an orgasm.

*I rest my case.*

*Sent in by Deborah Wicke Sheets, Life Support Program Coordinator, Education Services - Gettysburg Hospital, PA 17325*

---

## Milestones

**Mensaversaries:** As of this month, the following Mensans have maintained continuous membership in American Mensa Ltd. for the years shown. These anniversaries may not accurately reflect the total number of years in Mensa if a break in membership for one or more years has occurred.

- 32 - Mabel L Loesch
- 21 - Leo L Holland
- 16 - John W Friedberg
- 12 - Jason D.Hatcher
- 9 - Robert Prescott Keller
- 7 - L Michael McNab
- 5 - George A Chancellor Jr; Robert Odgen; Karen Stripling
- 4 - J Roger Landers; Janet N Evans
- 3 - Brenda S Austin; Morrie P Beitch; Jennifer Jenkins; Della McGuire
- 2 - Tae Kim
- 1 - Paige Andre-Hudson; Dana Schack; Darryl Smith; Jennifer Watson

### Happy November Birthdays!

- 3 - Dawn Cannon
- 4 - Larry B Caley
- 7 - William Ronald Browning
- 12 - Kelly M Hannum
- 15 - Anthony Williams
- 16 - Joseph William Weaver
- 18 - Carol Buckman
- 19 - Russell F Taptich
- 19 - Ronald M Hudspeth
- 23 - Robert Elens
- 30 - George A Chancellor Jr

*If your birthday isn't listed, it's because it is not on the membership roster we get from the national office each month - and that's because you instructed National to withhold it. Please go to [us.mensa.org](http://us.mensa.org) and change your listing (or write to the address in your Mensa Bulletin, or call them). We promise not to tell anyone how old you are.*

---

## Answers to Seven Trivia Questions

1. Robert Frost in Mending Wall (1914) in the Frost's second collection of poetry, North of Boston
  2. The Sun, or Helios or Sol; the closest star not in our solar system is Proxima Centauri
  3. The Decameron by Giovanni Boccaccio
  4. Wilhelm Rontgen (alternately spelled Roentgen)
  5. Oman
  6. Kentucky, Massachusetts, Pennsylvania and Virginia
  7. Adenosine diphosphate
-

# Précis

**Fraser Sherman**

*He's dead, Jim!*

**STIFF: The curious Lives of Human Cadavers** by Mary Roach is a terrific book covering the various uses to which we put human corpses, including crash-test dummies, transplants (“Nurses are frequently shaken by having to keep brain-dead bodies alive for the organs while people in better shape are turned off to honor do-not-resuscitate orders.”), surgical practice dummies, body-snatching, serious research into head and brain transplants and of course, cannibalism and necrophilia (“Only sixteen states have outlawed it.”). Really well done.

*Just kidding!*

**BURIED ALIVE: The Terrifying History of Our Most Primal Fear**, by Jan Bondeson takes on a fear that has been around since Ancient Rome, that doctors’ inexact estimates of death will lead to our being buried when we should be revived (not, as Bondeson shows, an irrational fear in ancient times). This terror culminated in the 19th century with the literary obsessions of Poe, medical activists who lumped it in with the "threat" of vaccination in their attacks on doctors, and such oddities as coffins with alarm bells and "waiting mortuaries" that held corpses until they'd rotted (thereby proving death for certain). Bondeson concludes that despite all the hype there have and still are cases of premature burial, though pretty rare ones. Not as good as STIFF, but interesting.

---



Photo by Bill White. **Jo Horne helps Paella Partygoers pig out.**

---

# A Chess Problem

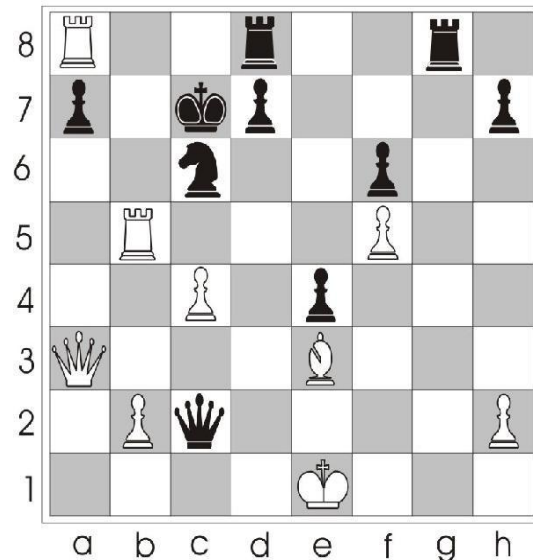
from Lars Runar

## October Solution:

1. - Qg2
2. Rg2 Rg2
3. Kh1 Rh3 Mate

*Reprinted by permission from Chess Training in 5333+1 Positions by Laszlo Polgar © 1994 Konemann Verlags gesellschaft*

## MATE IN THREE - WHITE TO MOVE



## Editorial Policy

**PensaMensa welcomes your articles and artwork!!** Submissions must show name, address, phone, and may be edited for clarity and space. Please enclose an SASE if you want your material returned. Deadline for submission is the 15th of each month.

PensaMensa is the official newsletter of Northwest Florida Mensa. Opinions expressed are those of the contributors and not necessarily those of any Mensa group or its officers. Mensa is a not-for-profit international society, whose sole requirement for membership is a score at or above the 98th percentile on any of a number of standard IQ tests. Please contact one of the Test Proctors (see Officers) for testing in Northwest Florida.