

PensaMensa Newsletter

October 2006

- :: ["M"embership News](#)
- :: [GenXers Get Trivialized](#)
- :: [ExComm Minutes](#)
- :: [Seven Trivia Questions](#)
- :: [News from all over](#)
- :: [The Tenth Story](#)
- :: [Crab Island](#)
- :: [Calendar](#)
- :: [ValenTime!](#)
- :: [Officers of Northwest Florida Mensa](#)
- :: [Xtreme Geocaching was a success!](#)
- :: [Milestones](#)
- :: [Answers to Seven Trivia Questions](#)
- :: [Précis](#)
- :: [China and Beyond!](#)
- :: [A Chess Problem](#)
- :: [Editorial Policy](#)



Going Home

This loggerhead turtle hatchling was photographed by Betsy Straley of Panama City. Betsy and Roger are members of the St. Andrew Bay Resource Management Turtle Watch Group. For more information on this group, go to www.turtlewatch.org.

It's Paella Time!

You and your family and friends are invited to the 7th Annual Paella Picnic at Bill and Bel White's home. Bel will provide her delicious paella and iced tea - if you want something else to drink, do bring it along; do bring a salad or desert to share.

Saturday, October 21 at 2 p.m. at the White House, 338 Okaloosa Road, Fort Walton Beach.

Don't miss this delightful afternoon in a beautiful garden! RSVP requested but not required: u2rhuman@cybertron.com or 850-243-5247.

Editor's Notes

Thanks so much to Betsy Straley for the cover photo, and to Jim and Roberta Harris for taking us on their tour to China and Beyond. It's a rare treat to have two timely topics so well addressed.

It seems early to talk about ValenTime, our annual regional gathering in February, but we need to select good (and free) speakers, plan a program schedule with something for everyone, and find volunteers to carry out hundreds of tasks.

Do you have a favorite speaker to recommend? What subjects would you like addressed? What did you like or dislike about past RGs?

Please speak up - it's your party! And I charge extra for mind-reading

If you are getting both the electronic and the print version of *PensaMensa*, and you're willing to give up the print version and save us a buck, please let me know at bobwick@gnt.net.

"M"embership News

by Bob Ulrich

The relocation "bug" took a bite out of Northwest Florida Membership totals in August. The good news, especially from a Mensa national perspective, is that we added 3 new members to our local group. We also had 2 members move to our area. Unfortunately these gains were offset by 6 Mensans moving away. We also had 1 member pass away for a decline of 7. So with 5 pluses and 7 minuses we had a roster loss of 2 for a new total of 192. This is exactly the same total as we had last year and the year before at the end of August.

The sad news is that **Glen Boyd**, age 75, who resided in Pace has passed away. We express our condolences to his family and friends. The 6 relocations from this area were: **Ronald Aizer** going from Cantonment to Thompsons Station, TN; **Eugene Arnold** moving from Defuniak Springs to Peebles, OH; **William Blount** going from Pensacola to Indialantic, FL .a city on the east coast close to Melbourne, FL; **Robert Harder** relocating from Eglin Air Force Base to Colorado Springs, CO; **Darci Lolley** moving from Pace to Tallahassee, FL; and **Thomas Sanders** going from Shalimar across the country to Beaverton, OR.

The additions to our local group are 2 members who moved in: **Jonah Wayne Johnson** who moved with his parents from San Diego, CA to Pensacola; and **Bob Teasdale** who comes back to our area after a relatively short stint in Tampa. He now lives in Valparaiso.

Also new are 3 first-time members. **Laura Dolly** joins us in Panama City, **Deborah Griener** joins us in Lynn Haven, and **Jill Russ** joins us in Niceville. Jill's husband Tom joined 1 month earlier. A big welcome, or welcome back, or welcome to our area to all of you new additions to Northwest Florida Mensa.

On a personal note I enjoyed seeing many faces, some familiar some new, at the August pool party. One of you fine folks, I'm sorry to say I didn't notice who, bought a great dip with a horseradish flavor and a nice tang in a 1 quart Tupperware container with a handle and a vented lid. The container was left at my house. I took this container to the Mochans the following week for their "Bend/Fold" function hoping someone would know who it belonged to. No one did. As far as I

know the bowl is still at John's house. So if you are missing that Tupperware call John and we will arrange its return.

ExComm Minutes

by John Mochan

The Executive Committee Meeting was held at the Mochans' home in Fort Walton Beach on September 23, 2006. The meeting was called to order at 2:13PM. Attending were: John Mochan, Bob Ulrich, Bobbye Wicke, Mabel Loesch, Fraser Sherman, Mary Ann Mochan, and Bill White. John Mochan moved and Bob Ulrich seconded that the minutes of the previous meeting be approved as published in the newsletter.

President: No report.

Vice President: The election is finished. The new President is John Mochan, Vice President is Heidi Daniels, and Treasurer is Jerry Gilbert. Bobbye Wicke is retained as Publications Officer and Bob Ulrich is retained as Membership Officer. The outgoing President notified National HQ of our new officers. **I am still looking for a volunteer to take over the duties of Webmaster.**

Membership: We presently have 192 members. See details in Membership Officer's Report.

Treasurer: All assets will be transferred to Compass Bank as the records are turned over to the new Treasurer. An audit will be accomplished during the transfer.

Publications Officer: Our subscriptions to other newsletters will not be changed for the coming year. If our members wish to give a copy of the electronic PensaMensa to a friend, they need only follow the instructions at the bottom of the newsletter.

NEW BUSINESS

The Autumn Garage Sale will be in November at the home of Bobbye Wicke in Fort Walton Beach. Please contact any officer to donate items for sale.

National Testing Day is now known as Mensa Testing Day (MTD) and is set for October 21, 2006. We will again participate with testing offered in several locations. Our Publications Officer, Fraser Sherman will advertise the test times and locations in local newspapers.

Mensa HQ has agreed to publicize our ValenTime Regional Gathering on their Web Site and in the Mensa Bulletin even though we do not yet have the room rates set with the Holiday Inn. The rates last year were \$75 to \$108 and will be about the same this year. RG registration is \$40 per person. John Mochan will be Registrar, Bob Horne will be Hospitality Chairman, and the Program Committee initially consists of Mary Ann Mochan, Joanne Horne, Bobbye Wicke, Roberta Harris, and Fraser Sherman. Please contact any of these people to volunteer your ideas and expertise to make it another memorable RG. This will be our 5th RG and we will make it something special.

Next month's meeting will be Saturday, October 21 in Fort Walton Beach during the annual Paella Party at the White's house. Adjourned at 3:18PM.

News from all over



Geocaching photo: Patrick Peavy and Dana Schack make a cache

We love getting good news from our favorite far off members (no, I didn't say "far out"):

***From Kelly Hannum,
trignation@hotmail.com***

"I wanted to pass on the good news to the group .. Everett David Hannum was born on 30 Jul 06 in Lancaster, PA. He was 7 lbs 13 oz and 22 inches long at birth. Although things were a little scary for the first few days (Amy had to have an emergency C- Section, and 'Rett had to

spend 10 days in the Neonatal ICU fighting off an infection and some other issues), but Mom and Baby are both doing great now. At this point, I've been trying to convince him not to follow in my footsteps as a bomb technician, but I did offer to take him skydiving anytime he wants to go (provided we can sneak past his Mom on that one)."

Outgoing President Terri Culbertson has a career change that she describes "It's like I tripped and fell headfirst into someone else's lucky day. It's a great feeling to be able to actually work in the field I spent so much time studying for...and the nearly double paychecks don't hurt either." (Her last job was teaching high school calculus.) Terri's now with a Panama City defense contractor working on a sonar mine project for the Navy. She's been on assignment in Virginia, now working in West Palm Beach, and living in Panama City.

And Bob Teasdale is back! After being blown away by Hurricane Ivan and captured by a new job in Tampa, we hope he's here for good and will soon resurface at an event. Same old e-mail address if you want to hunt him down.

The Tenth Story

RVC Column for Region 10

It looks like 2007 will see Region 10 return to having multiple RGs available. I would have gone into withdrawal if it wasn't for the World Gathering. Central Florida will be hosting its Smarti Gras

RG at the end of January, and Northwest Florida will be hosting its ValenTime RG in mid February. Both of these groups have a history of putting on excellent RGs. I heartily recommend both of them. If you don't find information available in your local newsletter, you can download the registration form/information for both of them from the Region 10 website at region10.us.mensa.org. (NOTE: At the time of this writing, I have not yet received the forms. They should be on the website by the time you read this.)

It was good to see so many of our Region 10 members at the World Gathering. It did my heart good to see how many of us chose to volunteer to make it the best gathering ever. I believe there were many for whom that was their first ever gathering. What a way to start! I well imagine that those folks are already planning to attend the Annual Gathering next July in Birmingham, Alabama. I will be attending the fall AMC meeting in Providence, Rhode Island, on the weekend of October 13-15. The agenda for that meeting is on the national website. If you wish to discuss with me any of the issues on that agenda, please email or phone me by October 12. Your input is always welcome. October 21 is Mensa Testing Day (formerly known as National Testing Day). Is your group participating?

Maggie Truelove, Regional Vice Chair, Region 10
3333 Honeysuckle Lane, Orlando, Florida 32812; 407- 855-9078;
truluvs@cfl.rr.com; rvc10@cfl.rr.com; rvc10@us.mensa.org

Do you know someone who is a candidate for Mensa? Testing is friendly, noninvasive and painless - contact one of our test proctors or Fraser Sherman on page 2 for details.

Crab Island

This is an event for everyone, not a GenX event!

It's never too late to get out on the water in Florida! We will be boating to Crab Island **Saturday, October 14th**. If you don't have a boat then join us in renting a boat and we'll split the cost. If you have a boat, come out and give us a call to meet up at the island. **Meet at 10:00 AM at Clement Taylor park (131 Calhoun Ave, Destin)**. Calhoun Ave. is north off Hwy 98 next to McGuire's Irish Pub. The park is on the left and is fairly small so look closely. Bring snacks and beverages. If the weather is inclement then we'll just brunch at McGuire's!

Call Cameron Pouncey: 850-596-0944.

Calendar

Where no specific phone number is given, call 850-585-3194.

Friday, Oct. 6, 11 a.m.- 1 p.m. First Friday in Pensacola, L-o-n-g Lunch at Scenic 90 Café, 701 Scenic Highway, Pensacola. Drop in for a long visit if you can, a short one if you can't. As you enter the restaurant, go to your right and to the rear.

Tuesday, Oct. 10, 6 p.m. New! Supper Club in Pensacola - location not yet announced. We'll try

various restaurants, so come meet some new food and some new people! Call Dan Murray on his cell phone, 455-6339, after 7 p.m. or on weekends please.

Saturday, Oct. 14, 11:30 a.m. Second Saturday in Panama City. Lunch at Chef Imondi's Downtown, 448 Harrison Avenue, Panama City.

Saturday, Oct. 14, 10 a.m., Crab Island Outing in Destin. Meet at Clement Taylor Park, bring snacks and beverages See article on page 5; contact Cameron Pouncey at 850-596-0944.

Friday, Oct. 20, 5 p.m. - Happy Hour! Location not announced. Dave Howard is our coordinator - he and Tehane will be there at 5 p.m. Please call or e-mail davehoward01@earthlink.net or 897-5702.

Saturday, Oct. 21, 2 p.m. Annual Paella Party at Bill and Bel White's in Fort Walton Beach (see cover article). Bring a snack, favorite beverage or dessert to share. RSVP requested but not required: 243-5247 or u2rhuman@cybertron.com

Saturday, Oct. 21, 6-9 p.m., GenXers meet at Kazbor's Grill in Navarre (1878 Andorra St. in the Publix Shopping Center. Contact Heidi Daniels, hsdaniels@gmail.com

Friday, Oct. 27, 11:30 a.m., Last Friday in Shalimar. Lunch at Shalimar Cheers Pub, 1270 North Eglin Parkway: their # is 651-2740. It's at the back of a yellowish office building immediately north of the courthouse, turn at the red-and-yellow sign and go through the parking area all the way to the back and to the right.

Saturday, Oct. 28, 2:00 p.m. Newsletter Assembly and Games - at the home of John and Mary Ann Mochan, 616 Overbrook Drive. FWB. Bring a snack or beverage, enjoy John's brownies, fold, staple, mutilate and stamp and get your newsletter early. jmochan@cox.net or 850-585-3194.

SPECIAL INTEREST GROUPS

Crestview Lunch Group. Call Lovic Thomas at 682-4133 to arrange a get-together.

Photography SIG. Dan Murray in Pensacola (455-6339) found out there was no camera club anywhere near him, so he started one.

Pinochle SIG. Contact Bob Mundorff in Navarre at 850) 939-5882 or pinochledd@aol.com. He will coordinate dates/times/schedules and is willing to host the games. For beginners too.

Shooting SIG. Contact Bob Mundorff in Navarre at pinochledd@aol.com or 939-5882 to go shooting during the week at the Escambia River Muzzleloader's range - modern small arms allowed.



China and Beyond!

These elephants are raised on special "farms" as their natural habitat is being developed with homes, etc. An elephant kept in captivity can live well into its 70's. Baby elephants are trained by watching and mimicking older elephants. Each elephant is paired with only one trainer, who stays with for life.

it

ValenTime!

Mark your calendars now

Northwest Florida Mensa's Regional Gathering will be held February 9-11 2007 (3 p.m. Friday thru noon Sunday) at the Holiday Inn, 1020 Hwy 98 East, Destin, FL. Registration is \$40 per person if paid by Feb 1, \$45 per person at the door, or \$20 per person for Friday night, \$35 for Saturday, and \$10 for Sunday. Please make checks payable to Northwest

Florida Mensa.

Name(s) _____

Address _____

Phone _____

Email: _____

Please mail this form to: Registrar — ValenTime

616 Overbrook Drive, Fort Walton Beach, FL 32547- 3528

Contact: John Mochan - (850)-585-3194, jmochan@cox.net

Room rates APPROXIMATELY \$75—\$108 depending on Gulf View. Double occupancy. Add \$10 per extra person. Call the hotel at (877)-837-6181 or (850)- 837-6181 and tell them you are with the Mensa group.

Visit us at: nwflorida.us.mensa.org

GenXers Get Trivialized

by Heidi Daniels

Our October gathering will be at Kazbor's Grille in Navarre on Saturday, October 21th from 6:00 to 9:00 PM (1878 Andorra Street in the Publix shopping center). Kazbor's is a small restaurant with a bar and hosts NTN trivia. Come hungry and with a trivial mindset! Note: the Kazbor's event date has been changed as not to conflict with the Crab Island outing!

November brings a delicious wine tasting. Dana and Andy Schack are hosting the event at their home in Navarre on November 18th at 6:30 PM (2016 Frontera St., Navarre). Bring a favorite bottle or a random new selection for everyone to share. No doubt we will have some good, some bad, and some "what were the wineries thinking" but that's the point! Whether you are a wine snob or think "wait wine comes in a bottle, right?" come on out. It will be a good excuse to warm up in November!

Heidi Daniels - GenX Coordinator,
hsdaniels@gmail.com

The GenX group is comprised of all Mensans born between 1961 and 1981 whose sole purpose is to provide an opportunity to cavort with like-aged Mensans. No ID needed, so, if you aren't GenX but any event interests you, please join us!

Seven Trivia Questions

Dr. Dan Finley, Brain Bowl Coach & Health Sciences Professor, Gulf Coast Community College, Panama City.

Dr. Dan invites you to submit a guest trivia question to dfinley@gulfcoast.edu for possible inclusion in future columns.

Dr. Dan Finley, Brain Bowl Coach & Health Sciences Professor, Gulf Coast Community College, Panama City. Dr. Dan invites you to submit a guest trivia question to dfinley@gulfcoast.edu for possible inclusion in future columns.

1. What is the meaning of the term “bowdlerize?”
2. What is the origin of the title Ray Bradbury’s *Fahrenheit 451*?
3. What letter did Hester Prynne wear in Hawthorne’s *The Scarlet Letter* and what for what did it stand?
4. What was the “red badge” in Crane’s *Red Badge of Courage*?
5. Where are the largest area of sand dunes in the Western Hemisphere?
6. What language is spoken in Shanghai, China?
7. What was the first self-serve grocery store in America?

Officers of Northwest Florida Mensa

President: John Mochan (850) 585- 3194; 585-5067; 616 Overbrook Dr., Fort Walton Beach, FL 32547-3528; jmochan@cox.net

Vice President: Heidi Daniels (850)433- 1465; 221 Cevallos St. Pensacola, FL 32503; hsdaniels@gmail.com

Treasurer: Jerry Gilbert (850) 862-4800; 700 Trowbridge Ave., Ft. Walton Beach, FL 32547

Membership Officer: Robert Ulrich (850) 939-6870; 7025 Pro Am Ct., Navarre, FL 32566
bulrich@mchsi.com

Editor: Bobby Sikes Wicke (850) 862- 2874; P.O.Box 252, Mary Esther, FL 32569; bobwick@gnt.net

Northwest Florida Mensa Home Page: <http://www.nwflorida.us.mensa.org>

Arbitrator/Mediator and Test Proctor: Steve Brumm (850) 747-3233; Panama City, FLAD4WT@aol.com

Gifted Child Coordinator: Jonathan Miller (850) 939-9785; 8214 Riverside Landing Way, Navarre, FL 32566; jonathan.miller7@mchsi.com

Panama City Coordinator: George Chancellor (850) 874-0154; 7523 Coleridge Road, Panama City, FL 32404; georgec584@aol.com

Publicity Officer: Fraser Sherman (850) 863-3616; Fort Walton Beach, FL bogatyr5@aol.com

S.I.G.H.T Coordinator & Test Proctor: Mabel Loesch (850) 433-2358; 2140 E. Scott St., Pensacola, FL 32503-4957; mloesch@bellsouth.net

Test Proctor: Joanne Horne (850) 315- 0255, 641 Merioneth Ct., Ft. Walton Beach, FL 32547; johorne@cox.net

Webmaster & Test Proctor: John Mochan 850) 585-3194

Xtreme Geocaching was a success!

by Heidi Daniels

After a hearty IHOP breakfast the 7 participants split into 2 teams and the challenge was on. There were 7 pre-selected caches to find, each with a point score based on difficulty. We had geocaching newbies on each team and each team had a local which was essential for timely access to cache

locations! The caches were varied with several regular sized caches and a couple of difficult to find micro caches.

Weather was beautiful and the caches selected took us to hidden parks and playgrounds, cemeteries, monuments, and museums. In the end both teams found all caches therefore earning the same number of points. One team, however, did finish in record time and went on to look for other caches until the competition was over!

We ended the day at TGI Fridays enjoying food and drinks and comparing details of the hunt. A special thanks to John Mochan who pre-selected the sites and was available during the competition for our “phone-a-clue” option. Thanks John! Keep an eye out for our next competition. We formulated some new ideas on how to incorporate more strategy and more levels of play.

Milestones

Mensaversaries: As of this month, the following Mensans have maintained continuous membership in American Mensa Ltd. for the years shown. These anniversaries may not accurately reflect the total number of years in Mensa if a break in membership for one or more years has occurred.

27 Jerry W Bradshaw
27 Lars E Runar
24 Robert T Glasure
19 Marya M Bard
16 Lynn A Atkinson
8 Aaron “Stoney” Blackwell
7 Mark Boss
6 James Grady
4 C A Mattie Kain
3 Cheryl Rothwell

Happy October Birthdays!

2 Pamela Fleischer
8 Linda Rae Campbell
9 Shirley M Branan
13 Elaine P McDaniel
14 Zacharie Wilde
15 Merrily Austin Teasley
16 Bryan Clark
20 Lydia Del Rosario
20 Bob Teasdale
22 Tony Ray Gilligan
25 Erika Bell
29 Daniel Finley

If your birthday isn't listed, it's because it is not on the membership roster we get from the national office each month - and that's because you instructed National to withhold it. Please go to us.mensa.org and change your listing (or write to the address in your Mensa Bulletin, or call them). We promise not to tell anyone how old you are.

Answers to Seven Trivia Questions

1. It is a form of censorship in which portions of a book are expurgated by omitting or modifying parts that are considered vulgar. An eponym named for Thomas Bowdler (1754-1815) and English physician and rewriter of literature.
2. In his 1953 book, Bradbury states that 451° F (233° C) is the temperature at which book-paper catches fire and burns. The book is a 21st century dystopian novel in which firemen are employed to find and burn books because of their threat to society. In an interesting turn of events, Fahrenheit 451 itself was banned because of its inclusion of the words “damn” and “hell.”
3. A, it stood for adulteress
4. A wound or a bloody wound.
5. Sand Hills Nebraska
6. Wu. Wu is one of the major divisions of the Chinese language. It varies from the most common form of Chinese, which is Mandarin or Beifanghua Chinese with 800 million speakers to 88 million speakers of Wu.
7. Piggly Wiggly. Opening in 1916 in Memphis by Clarence Sanders, it replaced the older model in which customers requested items from a clerk standing behind a counter.

Précis

by Fraser Sherman

Building for armageddon: First, the apocalypse that didn't happen—

SURVIVAL CITY: Adventures Among the Ruins of Atomic America by Tom Vanderbilt is a fascinating look at Cold War “nuclear architecture” including JFK’s Palm Beach bomb shelter, abandoned missile silos (including several being transformed into experimental housing developments), the aesthetics of designing “homey” bomb shelters, fake towns set up for nuclear tests and the once weighty question of whether cities can be built to survive nuclear war (move them underground?) or if they should just be written off in favor of suburban sprawl (increasing survival rates by dispersing the population). Very good.

And the one that did—

SIXTEEN ACRES: Architecture and the Outrageous Struggle for the Future of Ground Zero by Philip Nobel argues that the efforts to memorialize the “sacred space” of the Twin Towers were compromised from the first by being dominated by money and politics, the driving force being the developer’s determination to regain all that lost commercial space and Governor Pataki weighing in on his side (the final design actually lost the competition but Pataki overruled the committee). Nobel also ruminates on whether it’s even possible for 21st-century “starchitects” to come up with a suitable design, Nobel arguing that neither modernism nor post-modernism have the necessary visual language (“Lindsker talked a lot about what his design meant, because the design itself didn’t say anything.”), and on what we’re actually commemorating (“The design proclaims the tower footprints as ‘sacred space’ as if the memorial were to the buildings and not the occupants.”). Also very good.

China and Beyond!

By Jim and Roberta Harris

We were like kids on Christmas Eve as we anticipated our trip to China and Thailand; and Santa certainly delivered! Other than the very long flight to Beijing, the trip surpassed all of our expectations as we experienced foods, cultures and breathtaking scenery.

The Chinese believe that moving water is cleansing, so daily swims in the Yangtze River or any other moving water source is very common. We were fascinated to watch three men swim across the river, through the shipping channels, for their morning exercise.

EDUCATION: As in most Asian countries, there is a very high value placed on education and doing well on exams to enter into the best schools. The college exams take at least two full days to complete and test languages, math, science and geography. We were surprised to find ourselves chatting in Spanish to some young Chinese women while on one of our scenic boat trips in the Li Valley. A problem that is occurring, however, is the younger generations are becoming extremely educated, but good, high paying jobs are very difficult to find.

CULTURES: We found the Chinese people to be very patient everywhere we went. Thailand greets everyone with folded hands and a bow. It is not uncommon to be asked your age or which horoscope you are. It's not being rude but to ensure you are given the respect you deserve. In both cultures age is very respected.

Typically one thinks of the very narrow alleys with rickshaws when thinking of China. These "communities" are called hutongs, many of which were built in the Yuan (1206-1341), Ming (1368-1628) and Qing (1644-1911) Dynasties. Sadly, hutongs are disappearing due to new construction and good ol' urban sprawl.

Roberta had the opportunity to dance and do Tai Chi in the Temple of Heaven Park in Beijing. It's true that all ages gather in the numerous green spaces and do morning exercises. However, as the younger ones head off to work, the seniors remain and continue to dance, play instruments, sing, play numerous board and card games and do other various forms of exercise. The parks and green spaces are very well utilized and maintained in China.

CITIES: Our trip took us to Beijing, Shanghai, Wuhan, the Yangtze River and surrounding cities, Chongqing, Guilin, and Hong Kong, China, then onto Bangkok, Thailand. A "small town" in China still has a population of 7 million, but the cities were clean and bustling. The locals were very interested in us; perhaps because of Roberta's blond hair and Jim's height. Regardless, they enjoyed practicing their English while asking us if we minded if they took our pictures, often with their families, and were very tolerant of our "pigeon Chinese." Mao's tomb in Tiananmen Square was a very large attraction for vacationing Chinese, who stood in line for over three hours to pass by Mao's body in state. The Great Wall was also another favored spot that brought Chinese from all over the country. Xian is home to the Terra Cotta Army. We've read and watched numerous documentaries, but seeing the Army in person is truly awe inspiring.

FOOD: Everyone told us how much weight we would lose in China. Our standard joke became, "We'll start losing weight tomorrow" as the food flowed course after course after course. Guaranteed there would be something for even the pickiest eater. We enjoyed watching the locals snack – cucumbers eaten like pickles were very popular even among children, as was corn-on-the-cob in China. In Thailand we snacked on "fish" rinds, which we believe to be an acquired taste.

SCENERY: The Three Gorges Dam project will be completed around 2009. The vastness of this project is mammoth. But the scenery through the Three Gorges was breathtaking! The Chinese are

currently taking silt along the river's edge and moving it up the mountainsides to help fertilize the land. **OUR EDUCATION:** We expected China to be a poorly developed country with people stacked upon people with no greenspaces. Instead, we found a very modern country and a very happy populace. Shanghai makes up about 4 or so New York City's with buildings so tall they are laughingly called "sky scratchers." Certainly lots of people, but traffic flowed very well in all of the China cities we visited, while traffic moved very poorly in Bangkok – where a traffic light can linger on red for well over 5 minutes.

What is China without its Panda Bears? Cute and loveable, they prefer the mountains where it is much cooler than many of the zoos in the cities. The bears are housed in man made caves to keep them cool. They only come out once a day to be fed so the public can see them. The keepers go to the mountains once a week to get the "mountain bamboo."

Cloisonné (enamelware) and silk production are all done by hand. Sadly, there is a concern that these very labor intensive yet very highly skilled arts will be lost as people become more educated and wanting higher wages.

MYTHS: One child and it must be a boy! This policy did not come into law until 1979, and while partly true, there are many exceptions. Exceptions include farming families which may have two children; minorities – China has about 200 minority tribes – may have two children; wealthy families (and yes, there are MANY wealthy Chinese) may have as many children as they can afford; if two "only children" marry each other, they may have two children. This is to help share the care of elderly parents. Interestingly, China is experiencing DINKS – Dual Income, No Kids – which is creating a shortage of future taxation. And we found many boys AND girls in equal numbers in all of the cities and country sides we visited.

The Chinese also don't eat dogs and cats. In fact, it is quite fashionable to have pets with the latest doggy foofoo, small dogs and cats being very popular in the city with larger dogs more abundant in the country.

We've barely touched the surface of our trip! There is General Stilwell and the Flying Tigers, The Dragon Lady's marble boat, The Palace in Thailand that makes the Forbidden City pale in comparison, the two acrobats on a high wire over Shennong Stream just off the Yangtze River, Religions and more!!! It was a trip beyond our highest hopes and we look forward to returning in the future.

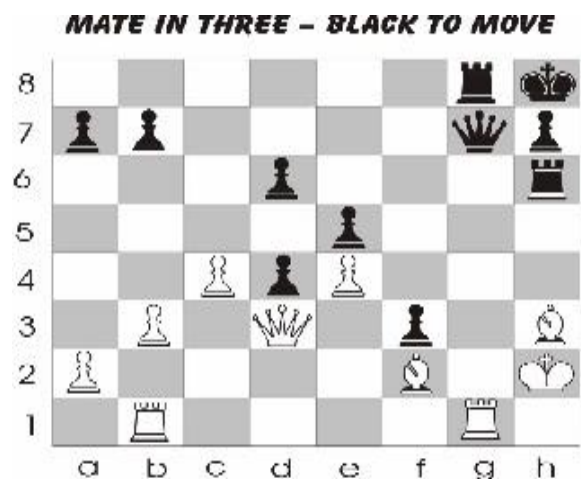
A Chess Problem

from Lars Runar

September Solution:

1. - Rh3
2. gh3 Bf3
3. Kh2 Ng4 Mate

Reprinted by permission from Chess Training in 5333+1 Positions by Laszlo Polgar © 1994 Konemann Verlags gesellschaft



Editorial Policy

PensaMensa welcomes your articles and artwork!! Submissions must show name, address, phone, and may be edited for clarity and space. Please enclose an SASE if you want your material returned. Deadline for submission is the 15th of each month.

PensaMensa is the official newsletter of Northwest Florida Mensa. Opinions expressed are those of the contributors and not necessarily those of any Mensa group or its officers. Mensa is a not-for-profit international society, whose sole requirement for membership is a score at or above the 98th percentile on any of a number of standard IQ tests. Please contact one of the Test Proctors (see Officers) for testing in Northwest Florida.