

# PensaMensa Newsletter

September 2007

- :: [Editor's notes](#)
- :: [Don't Miss!](#)
- :: ["M"embership News](#)
- :: [Seven Trivia Questions](#)
- :: [Cryptograms by Jill Russ](#)
- :: [The Tenth Story](#)
- :: [Cryptogram solutions](#)
- :: [Calendar](#)
- :: [A Chess Problem](#)
- :: [Are we having fun yet?](#)
- :: [Officers of Northwest Florida Mensa](#)
- :: [Curmudgeon's Corner: shopping around](#)
- :: [Are We Threatened?](#)
- :: [You shoulda been there](#)
- :: [Answers to Seven Trivia Questions](#)
- :: [Milestones](#)
- :: [Précis](#)
- :: [Editorial Policy](#)



**Thanks to Lars Runar** for this photo he took from the deck of the Lucky Snapper Restaurant in Destin. It's on display at the Arts and Design Society (open every day except Monday on 1st Street between Beal and Eglin Parkway).

**Let's unwind and play and smell the roses!**

Saturday, September 8:

Family Game Day - 10 a.m.

Women's Night Out - 5:30 p.m.

See *Don't Miss*, below.

## Editor's notes

### and other news

No President's Message or ExComm minutes from John Mochan this month because Mary Ann is

recuperating after removal of a craniopharyngioma from her pituitary gland last week. It's a rare affliction, but then Mary Ann's a rare bird and we're all very happy and relieved that she's doing well.

You may have seen in the Pensacola News Journal (August 29) or on TV Channel 3 (August 30) that Marine Gennaro Mazzeo, son of Dan Mazzeo, was seriously wounded in Iraq. He has since been transferred to Camp Pennington, CA. Our thoughts and prayers go out to Gennaro and his family.

Thanks to the good folks who responded to my 11th hour request and folded, stapled, mutilated and stamped the print *PensaMensa*: Chris McArdle and his son, Bob Ulrich, Jo and Bob Horne, and Fraser Sherman.

The annual Pool Party/Cookout was as tasty and titillating as ever, with good company, good drinks, and perfectly grilled entrees. And new treats: lemon cheesecake with raspberry whipped topping by Bob Ulrich, and chocolate bread by Fraser Sherman (anything that tastes that good has to be wholesome).

---

## "M"embership News

by **Bob Ulrich**

Northwest Florida Mensa had a good membership month in July losing no one and adding 5 new members. We still have a ways to go to get back to that nice round figure of 200 members, but we now have 186.

For a change the real estate relocation figures came out in our favor. Two Mensans moved into our area and since we had no losses, obviously no one moved out. New to the Panhandle are **Michael Runkle** who arrived in Panama City Beach from Fort Leavenworth, KS and **Joseph Yates III** who moved from Frisco, TX to Santa Rosa Beach. Welcome to the area to both of you and we hope to meet you at a function real soon.

Two other members decided to rejoin Mensa. **Carol Buckman** in Fort Walton came back after only a few month absence and **Gilbert Zoeller** returned after a longer time away. Gilbert lives in Gulf Breeze and has a birthday at the end of this month, happy birthday. Gilbert, and welcome back to both of you.

The last addition to the group is a brand new members. **Eric Peszko** who resides in Panama City Beach joined Mensa in July and we are happy to have him in the group.

I am typing this just before 2 p.m. on August 18th the day of the ex-com pool party at my abode. If you are reading this and didn't come you probably missed a mediocre?, good? great? party. Anyway I hope everyone had a good time.

---

# Cryptograms

by Jill Russ

Easy Level

GKPJ JEOJWLIUWA SBTGX RQBS NA GJIOC IUX

NBTUXC KP RQJJU FJRJLINGJC CHJGGJX IC

RBBX IC NIWBU. ~XBTR GIQCBU

**Challenge Level**

The Challenge Level includes the "space" as part of the cryptogram. In other words, the letter R might actually be the space, and a space might be a letter. The end of each line of the cryptogram is the end of a word.

HPMIUTNQDMGIRXHPHPMIOMSMIUNND

XJGJXIGWDGNWDMIXWXFGKXMWNG

AJKGHZBM. ~ZKMPJBGKXSXJVX

---

## The Tenth Story

### RVC Column for Region 10

THE LDW IS COMING! It is official now - Region 10 will be holding a Leadership Development Workshop November 3, 2007.

LOCATION: The Red Rose Inn and Suites (formerly Ramada Inn Plantation), 2011 North Wheeler Street, Plant City, 33563 - at Exit 19 on Interstate 4. We have a \$75 nightly room rate, for up to 4 in a room. Staying at the hotel does include a full breakfast buffet. To allow for 4 in a room, they are blocking 20 guest rooms with 2 double beds for us, but you can have a king bed if you request it. Call 813-752-3141 to book your room. Mention "Mensa Leadership Workshop" to get the \$75 rate.

FRIDAY EVENING: We will have light hospitality (sodas and snacks) from 6:00 to midnight in the Abbey 1 room at the hotel. Purely social. We cannot use LDW funds for alcohol, so bring your own if you want it.

SATURDAY MORNING: Breakfast buffet is included with your room if you are staying at the hotel.

SATURDAY: We will be presenting pertinent topics from 9:00 a.m. to 1:00 p.m. and from 2:00 p.m. to

6:00 p.m. in the Twelve Oaks Room, which has a maximum capacity of 50 people.

SATURDAY 1:00 - 2:00 p.m.: Attendees will be treated to a hot buffet lunch in the hotel's excellent restaurant. (NOTE: They don't usually serve lunch on Saturday, so this will be just for us.)

SATURDAY EVENING: Jerry and Merrell Fortner, who live 15 minutes from the hotel, are graciously hosting a party with dinner for all attendees of the LDW. We will carpool and caravan from the hotel to the Fortners. You may attend the LDW without staying at the hotel, but for those at a distance, this is a good value. No registration fee. Meals provided all day Saturday, including breakfast if you are staying at the hotel. Sunday Breakfast provided if you stay over Saturday night.

TOPICS: Speakers will be dealing with all or most of these topics:

Getting Public Relations for Mensa

National Office Services

Welcoming New Members

Whole Family/ Child Friendly Activities

ExComm Basics

Forming and Using Committees

Special Events and Speaker Meetings

### **Maggie Truelove, Regional Vice Chair, Region 10**

3333 Honeysuckle Lane, Orlando, Florida 32812;

407-855-9078; truluvs@cfl.rr.com; rvc10@cfl.rr.com; rvc10@us.mensa.org

### **Florida winners of the Publication Recognition Program Awards:**

NEWSLETTER: Outstanding Newsletter (Large Group) - Thomas Thomas, editor - Tampa Bay Sounding, Tampa Bay Mensa, Group 10/335

Outstanding Newsletter (Medium Group) Edgar Coudal, editor - The 4M, Manasota Mensa, Group 10/342

OWL : Edgar Coudal, editor - The 4M - Manasota Mensa, Group 10/342

**WEBSITE: Overall Entertainment - Jill Russ, webmaster - Northwest Florida Mensa - Group 10/325**

CHAIRMAN'S CERTIFICATE OF APPRECIATION : Elissa Rudolph - Palm Beach Mensa - Group 10/334

ABBIE PROCTOR OF THE YEAR CERTIFICATE: Glenn L Davis - Southwest by South Florida Mensa - Group 10/339

---

## **Cryptogram solutions**

### **Easy Level**

Life expectancy would grow by leaps and bounds if green vegetables smelled as good as bacon. ~*Doug Larson*

### **Challenge Level**

No one is listening until you fart. ~*Author Unknown*

---

# Calendar

Where no specific phone number is given, call 850-585-3194.

**Friday, September 7, 11 a.m. 1 p.m. First Friday in Pensacola, L-o-n-g Lunch at Scenic 90 Café,** 701 Scenic Highway, Pensacola. Drop in for a long visit if you can, a short one if you can't. As you enter the restaurant, go to your right and to the rear.

**Saturday, September 8, 11:30 a.m. Second Saturday in Panama City.** Lunch at Chef Imondi's Downtown, 448 Harrison Avenue.

**Saturday, Sept. 8, 10 a.m., Family Game Day** at the Mochans', 616 Overbrook Drive, FWB. (See lead article.) Info and directions: Jill Russ, 850-678-9169, [jillsruss@yahoo.com](mailto:jillsruss@yahoo.com) or Debi Dunkerly, 850-469-4602, [davendebi@cox.net](mailto:davendebi@cox.net).

**Saturday, Sept. 8, 5:30 p.m., Women's Night Out** at the Hornes', 641 Merioneth Ct. NE, FWB. See Page 3. Info and directions: Jo Horne, 315-0255 or [johorne@cox.net](mailto:johorne@cox.net)

**Tuesday, September 11, 6 p.m. Supper Club in Pensacola,** Hall's Seafood, 920 E Gregory St downtown Pensacola. Call Dan Murray on his cell phone, 455-6339, after 7 p.m. or on weekends please.

**Friday, September 21, 5 p.m. Happy Hour!** We will go to **Johnny O' Quigley's**, 34940 Emerald Coast Parkway, Destin. Dave Howard is our coordinator - he and Tehane will be there at 5 p.m. Info: [davehoward01@earthlink.net](mailto:davehoward01@earthlink.net) or 897-5702.

**Friday, September 21, 6 p.m. Bryan and Jennifer Clark have started a monthly poker night** (Texas hold 'em) at their house in Pensacola and would like to invite Mensa folks. It's for all skill levels - beginners welcome. They will also start up other games for those who don't want to play poker. Kids are welcome. For details, email Jennifer at [jenniferwclark@gmail.com](mailto:jenniferwclark@gmail.com) and she will email you an e-vite.

**Saturday, Sept. 22, 2 p.m. Open House and ExComm meeting** at the Mochans', 616 Overbrook Drive, FWB. Bring your favorite snack and/or beverage and join in planning activities. Info: [jmochan@cox.net](mailto:jmochan@cox.net) or 585-3194.

**Friday, September 28, 11:30 a.m., Last Friday in Shalimar. Lunch at Shalimar Cheers Pub,** 1270 North Eglin Parkway: their # is 651-2740. It's at the back of a yellowish office building immediately north of the courthouse, turn at the red-and-yellow sign and go through the parking area all the way to the back and to the right.

**Saturday, September 29, Newsletter Assembly and Games** at the home of John and Mary Ann Mochan, 616 Overbrook Dr., FWB. John will make brownies; bring your favorite goodies or beverage; fold, staple, mutilate and stamp, get your newsletter early and play games. Info: [jmochan@cox.net](mailto:jmochan@cox.net) or 585-3194.

**Tentative October Events:**

Oct. 5, Lunch, Pensacola; Oct. 6, Lunch, Panama City; Oct. 9, Supper Club, Pensacola; Oct. 19, Happy Hour, TBD; Oct. 19, Poker Night, Pensacola; Oct. 20, ExComm, FWB; Oct. 26, Lunch, Shalimar; Oct. 27, Newsletter/Games Day, FWB

**SPECIAL INTEREST GROUPS**

**Motorcycles SIG.** Dan Mazzeo of Gulf Breeze is vetting the idea of a SIG for anyone having an interest in motorcycles (owning one is not a requirement). Contact Dan at [onegoodengineer@aol.com](mailto:onegoodengineer@aol.com) or 850- 206-4213.

**Photography SIG.** Dan Murray in Pensacola (455-6339) found out there was no camera club anywhere near him, so he started one.

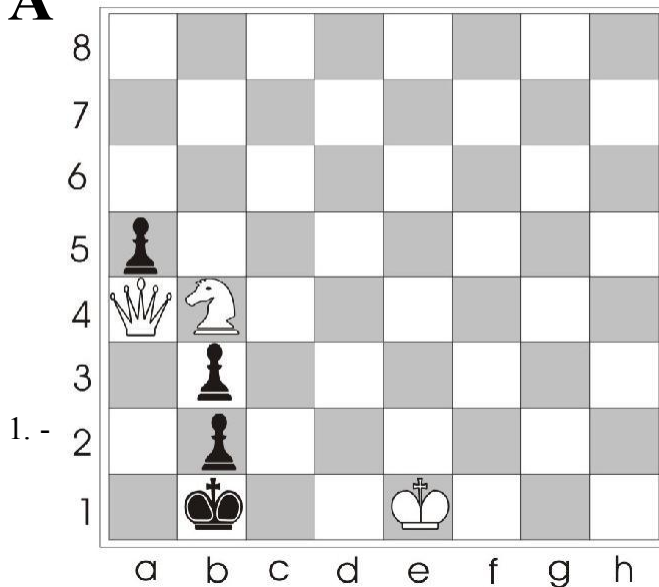
**Pinochle SIG.** Contact Bob Mundorff in Navarre at 850) 939-5882 or [pinochledd@aol.com](mailto:pinochledd@aol.com) .He will coordinate dates/times/schedules and is willing to host the games. For beginners too.

**Shooting SIG.** Contact Bob Mundorff in Navarre at [pinochledd@aol.com](mailto:pinochledd@aol.com) or 939-5882 to go shooting during the week at the Escambia River Muzzleloader's range - modern small arms allowed.

---

**MATE IN TWO - WHITE TO MOVE**

**A**



# Chess Problem

from Lars Runar

**Solution to August problem:**

Qc1 2. Rd1 Re1 3. Re1 Qe1 Mate (Algebraic notation) Reprinted by permission from Chess Training in 5333+1 Positions by Laszlo Polgar © 1994 Konemann Verlags gesellschaft



## Are we having fun yet?

Cheryl Rothwell, Mabel Loesch, Bob Horne, and Fred Mahony at the Pool Party/Cookout.

---

## Officers of Northwest Florida Mensa

**President:** John Mochan (850) 585- 3194; 585-5067; 616 Overbrook Dr., Fort Walton Beach, FL 32547-3528; [jmochan@cox.net](mailto:jmochan@cox.net)

**Vice President:** Heidi Daniels 850-433-1465; 221 Cevallos St. Pensacola, FL 32503; [hsdaniels@gmail.com](mailto:hsdaniels@gmail.com)

**Treasurer:** Jerry Gilbert 850-862- 4800; 700 Trowbridge Ave., Ft. Walton Beach, FL 32547

**Membership Officer:** Robert Ulrich 850-939-6870; 7025 Pro Am Ct., Navarre, FL 32566, [bulrich@mchsi.com](mailto:bulrich@mchsi.com)

**Editor:** Bobbye Sikes Wicke 850-862-2874; P.O.Box 252, Mary Esther, FL 32569; [bobwick@cox.net](mailto:bobwick@cox.net)

**Northwest Florida Mensa Home Page:** <http://www.nwflorida.us.mensa.org>

**Arbitrator/Mediator and Test Proctor:** Steve Brumm (850) 747-3233; Panama City, [FLAD4WT@aol.com](mailto:FLAD4WT@aol.com)

**Gifted Child Coordinators:** Jill Russ (see Webmaster listing below for contact info), and Debi Dunkerley, 850-469-4602; 3941 McClellan Road, Pensacola 32503; [davendebi@cox.net](mailto:davendebi@cox.net)

**Panama City Coordinator:** George Chancellor 850-874-0154; 7523 Coleridge Road, Panama City, FL 32404; [georgec584@aol.com](mailto:georgec584@aol.com)

**S.I.G.H.T Coordinator & Test Proctor:** Mabel Loesch 850-433-2358; 2140 E. Scott St., Pensacola, FL 32503- 4957; [mloesch@bellsouth.net](mailto:mloesch@bellsouth.net)

**Test Proctor:** Joanne Horne 850-315-0255, 641 Merioneth Ct., Ft. Walton Beach, FL 32547; [johorne@cox.net](mailto:johorne@cox.net)

**Webmaster:** Jill Russ 850- 678-9169, 12 Corbin Ct., Niceville, FL 32578; [jillsruss@yahoo.com](mailto:jillsruss@yahoo.com).

---

## Curmudgeon's Corner: shopping around

### Feeling curmudgeonly? Send it in!

● After cataract surgery, I needed to have one lens of my eyeglasses replaced with plain glass. Sears, where I'd bought the glasses, wanted \$122 for this service. Across the road, Primary Eye Care did the deed for \$10. Guess where I'm going for my next pair of eyeglasses.

● I used to go to the only service station on the south side of the Miracle Strip Parkway until a

technician told me that by looking at my car's underside from the pit he knew I needed a brake job right now. (I'd had no leaks or problems.) He was quite annoyed when I refused to let him pull all four wheels, and advised me, "This is a good little car and it will last a long time if you take care of it." I replied, "I've been taking care of good little and big vehicles since before you were born."

---

The Moon's the North Wind's cookie  
He bites it, day by day  
Until there's but a rim of scraps  
That crumble all away.  
The South Wind is the baker  
He kneads clouds in his den,  
And bakes a crisp new moon that . . .  
greedy. . .North. . .Wind . . .eats. . .again!

***"What the Little Girl Said"***

*Vachel (Nicholas) Lindsay, 1879-1931*

**What did you do with your summer?**

Contribute to a compilation of NWFM adventures or misadventures, real or fantasized.  
Send to bobwick@cox.net or POB 252, Mary Esther 32569. Call first for carrier pigeon delivery.  
Anonymous is okay - and might be better?

---

## Don't Miss!

### Family Game Day; Women's Night Out

**Family Game Day - Saturday, September 8, 10 am**, at the Mochan's, 616 Overlook Drive, Fort Walton Beach. Bring your favorite board game and a snack to share. This is not a drop-off event. Children must be accompanied by an adult. E-mail or call Jill or Debi if you have questions, or if you need directions.

Children do not need to be members of Mensa themselves in order to participate in Gifted Child Program (GCP) events. The GCP events are open to any child who is a member, or the relative of a member--child, grandchild, niece, nephew, etc--or any other child who is a guest of a member. If you are over 18, but you are still a kid at heart and you find an event interesting, you are welcome, too!

We are also holding a series of public information sessions for parents of gifted children. The next session will be at the Fort Walton Beach Public Library on September 18 from 6 to 8 pm. If you are the parent of a gifted child, you are invited to enjoy some coffee and conversation with other parents who share your concerns and challenges. Find out about the importance of developing your child's Educational Plan (EP) and learn about some resources that are available for gifted students.

We look forward to seeing you soon!  
Jill Russ, 850-678-9169, jillsruss@yahoo.com

Debi Dunkerly, 850-469-4602, [davendebi@cox.net](mailto:davendebi@cox.net)

### **Women's Night Out, Saturday, September 8, 5:30-8:00ish**

It's been nearly a year since the Mensa Women had an evening to themselves - it's time to do it again. The Northwest Florida women and their girlfriends are invited to enjoy a late afternoon, evening by the pool at 641 Merioneth Ct, NE, Ft Walton Beach. Bring your towel, a bottle of wine (or other favorite liquid) and a snack to share and we'll spend some time together. Do we need a theme? Probably not, but we are Mensans. Come ready to tell us a little something about a remarkable woman who happens to share your name.

For information or directions call Joanne Horne, 315-0255 or email [johorne@cox.net](mailto:johorne@cox.net)

---

## **Seven Trivia Questions**

**Dr. Dan Finley, Brain Bowl Coach & Health Sciences Professor, Gulf Coast Community College, Panama City.**

Dr. Dan invites you to submit a guest trivia question to [dfinley@gulfcoast.edu](mailto:dfinley@gulfcoast.edu) for possible inclusion in future columns.

1. Last month we listed the rivers of Hades. What are the two pools in the Hades of Greek mythology?
  2. What is the most northerly city in the world whose name is a palindrome?
  3. Who was the first woman to have her company listed on the Fortune 500 list of largest companies?
  4. What is one-half of 240 (two to the 40th power)?
  5. What is the deadliest animal to ever live in terms of causing the most human deaths?
  6. What is the meaning of the word "peripeteia"?
  7. Her Majesty's Security Service is officially known as "MI5". What does this abbreviation mean?
- 

## **Are We Threatened?**

### **Bobby Sikes Wicke**

This wee voice crying among the wilderbeest wants to know if you consider undocumented immigrants to be

1. criminals because they're here and,
2. an economic, cultural, and moral threat.

#1 is easily answered: being here is not a criminal offense (*please research before you write*).

#2 is history deja vu: In their turn, Irish, Jews, Italians, Chinese, and other nationalities were trashed by "real Americans." To determine your vulnerability to the purported current threat, try this short quiz.

(My perspective, based on statistical data except where noted, follows.)

1. Is your job in manufacturing threatened?
2. Is your job in food production threatened?
3. Is your job in meat processing threatened?
4. How about your customer service/technical representative job?
5. Your job in crop harvesting?
6. Is your service job threatened?
7. Your job in nursing and health-related services?
8. Your job in construction?
9. Do you feel that your religious, moral and cultural values are threatened by immigrants?
10. Are your tax dollars paying for medical services and education for "illegals?"

Anna Quindlen wrote in *The Last Word* (Newsweek, August 20/27, 2007):

"All the thundering about policing the border and rounding up those who have slipped over it ignores an inconvenient fact: America has become a nation dependent on the presence of newcomers, both those with green cards and those without. Mayor Michael Bloomberg of New York testified before a Senate committee that they are a linchpin of his economy. The current and former chairmen of the Federal Reserve have favored legal accommodations for undocumented workers because of the salutary effect on economic growth - and the downturn that could follow their departure. Business leaders say agriculture, construction, meatpacking and other industries would collapse without them."

Finally, the "amnesty" issue. The so-called amnesty is a prolonged jump-through-all-the- hoops procedure to earn your way to a point where you can apply for citizenship. It requires payment of fines for the sin of getting here, performance of social and economic duties, and a long return to your country of origin. It is not "forgiveness," it is measuring up to the privilege of joining us. Fortunately, this was not required of the past immigrants from whom we are all descended.

***My perspective:***

1. No, manufacturing has long since been outsourced. All you have to worry about is the safety of the stuff they're making "over there."
2. Yes, but not by undocumented immigrants. Your fruit, seafood and veggies are largely produced and packaged in third world countries.
3. Maybe. A large number of beef, pork and poultry processing jobs are done by immigrants. But if this a job you're literally dying to do, you can be hired.
4. Yes. Corporate cs/tech rep jobs are being done in India by skilled workers for much less than you

would earn, and they didn't have to migrate to get your job.

5. Yes. For decades harvesting has been almost exclusively the work of immigrant workers who travel from crop to crop in season. But if you crave dawn-to-dark working hours, muscular-skeletal breakdown, exposure to chemicals, lousy housing and no benefits, there are openings.

6. No. If you want to cook and clean and garden there are plenty of jobs. The wages have actually gone up a bit.

7. Get serious. Employers are begging for you and they don't care where you came from.

8. Perhaps. However, even with the current new housing construction slow-down, lots of jobs are advertised and wages have gone up - it's hard to determine whether Gulf Coast storm damage is the only major contributor to the current situation in this area.

9. Statistically, crime rates among immigrants are lower. Culturally, I can only observe that we enjoy a number of talented, sometimes funny, sometimes beautiful, people in all venues. I don't feel qualified to comment on religious values, but the conversion of many Hispanics from Catholicism to Fundamentalism is interesting.

10. Immigrants use services like hospitals and schools, which is a drain on public coffers, and they pay taxes, which contribute to public coffers. This issue is unrelated to the costs of such services.

---

## You shoulda been there

Ed Middleswart, Bob Ulrich, Jo Horne, Lynda Ulrich and Tom Stewart relaxing at the Pool Party/Cookout.



---

## Answers to Seven Trivia Questions

1. The two pools were Lethe, where the common souls flocked to erase all memory, and the pool of Mnemosyne ("memory"), where the initiates of the Mysteries drank instead.

2. Qaanaaq, in North West Greenland

3. Liz Claiborne

4. 239 (two to the 39th power)

5. The mosquito is responsible for millions of human deaths over thousands of years. Only the female mosquito bites; she needs a protein from blood to develop and lay eggs.
  6. [per-ih-pe-TEE-uh] In tragedy, the sudden reversal or unexpected change of the hero's fortune, as when the conquering hero, Agamemnon, was brought down by his wife. Another definition refers to the moment in Greek tragedy when the hero realizes that everything he believes in is wrong.
  7. Military Intelligence, Section 5. Within the civil service community, "MI5" is also known as "Box 500" (its wartime address) or "Five."
- 

## Milestones

**Mensaversaries:** As of this month, the following Mensans have maintained continuous membership in American Mensa Ltd. for the years shown. These anniversaries may not accurately reflect the total number of years in Mensa if a break in membership of one or more years has occurred.

31 Timothy D. Sutton  
28 David F. Howard  
27 Tony Ray Gilligan  
25 Gretchen K Gilligan  
20 James W. Harris  
17 Lawrence Miles Wager  
14 Brian T. Halonen  
7 Bobbye Sikes Wicke (actually 28)  
4 Colin Babin  
3 David L. Woodward  
1 Ed Middleswart

### **HAPPY SEPTEMBER BIRTHDAYS!**

2 James R. Scholter  
6 Robert Todd Glasure  
6 Douglas L. Mann  
6 Jack De La Piedra  
7 Heidi Daniels  
7 Karen Stripling  
10 Jerry Gilbert  
13 Jennifer Clark  
16 Artice L. McGraw  
16 Bobbye Sikes Wicke  
18 Barbara Woolwine  
20 M E "Buddy" Hall  
24 Micah Butler  
26 Robert Ulrich  
30 Gilbert Zoeller

*If your birthday isn't listed, it's because it is not on the membership roster we get from the national office each month - and that's because you instructed National to withhold it. Please go to*

*us.mensa.org and change your listing (or write to the address in your Mensa Bulletin, or call them). We promise not to tell anyone how old you are.*

---

## Précis

### Fraser Sherman

*The men behind the legends:*

**ST. GEORGE: Hero, Martyr and Myth** by Samantha Riches reveals that England's patron saint had a much more interesting history than I ever knew, being just as legendary in the Middle Ages for the brutal tortures he suffered for his faith as he was for dragon-slaying-not to mention being acclaimed as chosen champion of the Virgin Mary (several St. George paintings show a female dragon to juxtapose Evil Sexuality with George's purity) and a symbol invoked for everyone from John Ruskin, the Boy Scouts and the British far-right. A great read.

**MACBETH: MAN AND MYTH** by Nick Aitchison chronicles the transition of MacBeathad, a regional Scottish king who overthrew the notoriously weak Duncan in battle and then ruled for 17 years, into Shakespeare's tormented murderer. Aitchison concludes that the medieval chroniclers did most of the work, portraying Macbeth as an ungodly regicide (to emphasize the continuity of True Scottish kingship against English counterclaims) and introducing most of the supernatural motifs (including some Shakespeare didn't use such as Macbeth being the son of Satan himself), although Shakespeare added his own touches in creating the figure that now eclipses the real Macbeth. Interesting.

## Editorial Policy

**PensaMensa welcomes your articles and artwork!!** Submissions must show name, address, phone, and may be edited for clarity and space. Please enclose an SASE if you want your material returned. Deadline for submission is the 15th of each month.

PensaMensa is the official newsletter of Northwest Florida Mensa. Opinions expressed are those of the contributors and not necessarily those of any Mensa group or its officers. Mensa is a not-for-profit international society, whose sole requirement for membership is a score at or above the 98th percentile on any of a number of standard IQ tests. Please contact one of the Test Proctors (see Officers) for testing in Northwest Florida.